

**SAMSUNG**

**a|share™**

USER GUIDE

# Contents

<b>Connecting to a Network Router</b>	<b>3</b>	<b>Adding Shared Folders</b>	<b>12</b>
• Wired Network	3	<b>Create A Playlist In AllShare</b>	<b>12</b>
• Wireless Network	3	<b>Selecting a Device on Your Player's AllShare Play Screen</b>	<b>13</b>
<b>Configuring Your Network Connection: First Steps</b>	<b>4</b>	<b>Playing Blu-ray Disc Player with Other Devices</b>	<b>13</b>
• For Wired Networks	5	• Smart Phone connects to a PC to play a file through a Blu-ray Disc Player	13
• For Wireless Networks	6	• Play Video Files From My Computer On Your Player	14
<b>Installing and Using AllShare Software on Your PC</b>	<b>8</b>	• Play Video Files From My Smart Phone On Player	16
• To Download the AllShare Software	8	<b>Q&amp;A</b>	<b>17</b>
• AllShare Installation	9		
• AllShare Screen Layout	10		
<b>Connect To The Player And Other DLNA Compatible Devices</b>	<b>11</b>		
• Allowing A Connected Device Access	11		

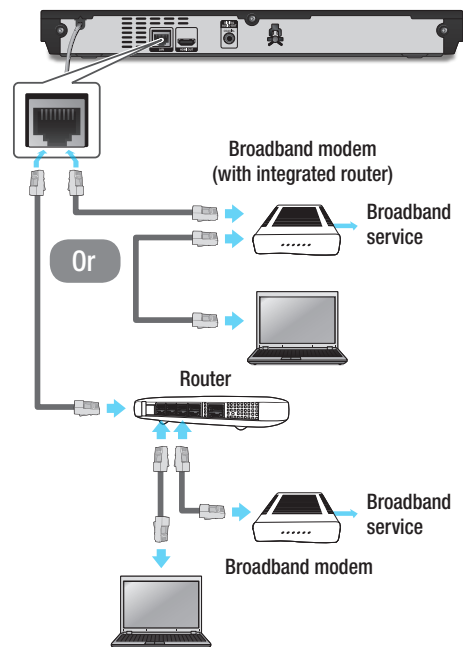
※ The functions may vary depending on your player model.

※ The figures in this manual are drawn for illustration purposes, and may differ somewhat from the actual appearance of the product.

## Connecting to a Network Router

Connect your player to your network router using one of the methods illustrated on this page.

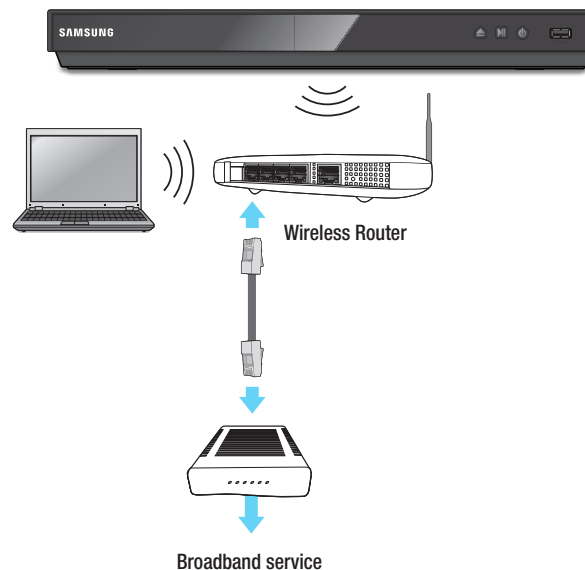
### Wired Network



#### Notes

- Internet access to Samsung's software update server may not be allowed, depending on the router you use or your ISP's policy. For more information, contact your ISP (Internet Service Provider).
- DSL users, please use a router to make a network connection.
- To use the AllShare function, you must connect your PC to your network as shown in the illustrations on the left. The connection can be wired or wireless.

### Wireless Network



If the player does not WiFi-built in model, you have to use the Samsung wireless LAN adapter.

#### Notes

- For more information, please refer to your player's manual.

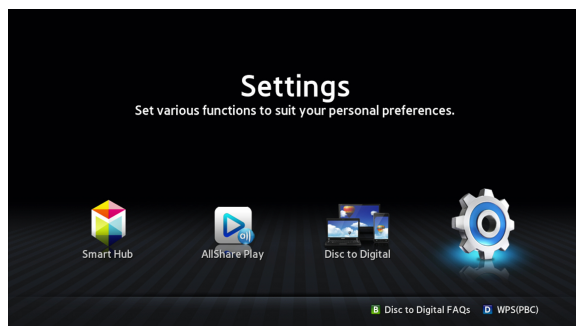
# Configuring Your Network Connection: First Steps

**1** Press the [HOME] button on the remote control.

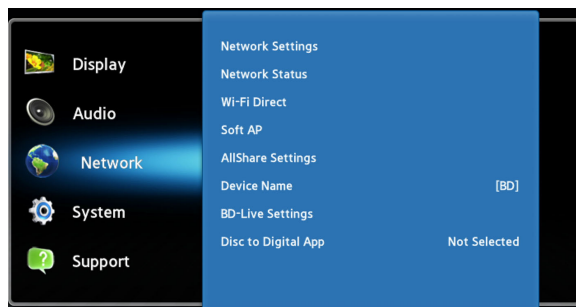
※ If you have a wireless network, make sure the access point you want to connect your player to is turned on. The access point can be a wireless router, modem, etc. If you have a wired network, connect one end of a LAN cable to the LAN port on the back of your player and the other end to a router or modem.



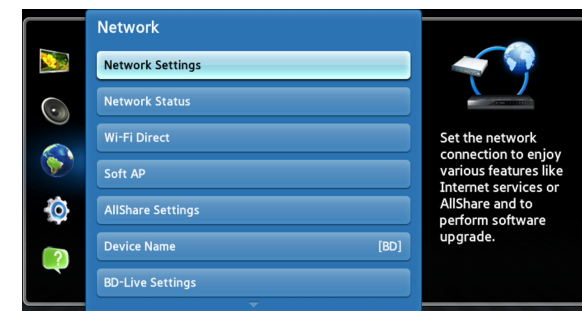
**2** On the Home screen, move to <Settings>, and then press the [G] button.



**3** Move to <Network>, and then press the [G] button.



**4** Move to <Network Settings>, and then press the [G] button.



**5** When the Network Settings window is displayed, go to "For Wired Networks" on page 5 or "For Wireless Networks" on page 6 to complete the network configuration.



※ Your player supports various network configuration methods (Wired/Wireless, WPS (PBC)) that let you configure your network easily and quickly.

## I For Wired Networks

### Wired - Automatic

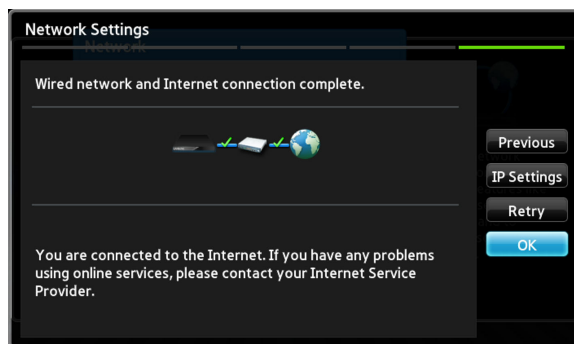
Use the automatic procedure if your network does not require a Static IP address. Most networks do not require a Static IP address.

- 1 Select **Start** in the Network Settings menu, and then press the button.

**<Start>** is usually highlighted automatically.



- 2 The player verifies the network connection and then connects to the network. Press the button when the network connection process is complete.

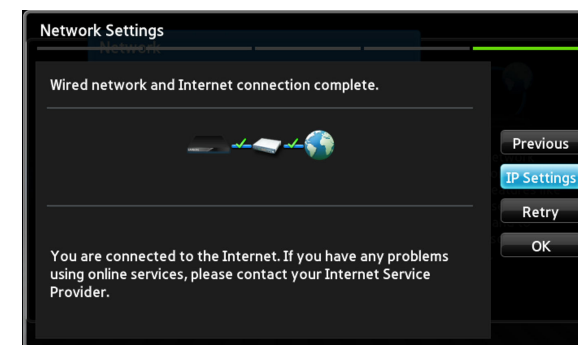


### Wired - Manual Configuration

If you have a static IP address or the Automatic procedure does not work, you'll need to set the Network Settings values manually.

- 1 Select **<Start>** in the Network Settings screen, and then press the button. The Network Status screen appears. The player attempts to verify the network connection and fails.

- 2 Select **<IP Settings>** on the right of the screen, and then press the button. The IP Settings screen appears.

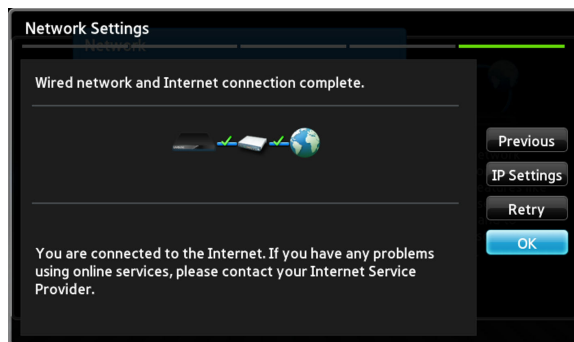


- 3 Select the **IP Mode** field, and then set it to Manual.

- 4** Use the number keypad on your remote to enter the Network values. Use the ▲▼◀▶ buttons on the remote to move from entry field to entry field.

You can get these values from your Internet provider. You can also view these values on most Windows computers.

- 5** When done, highlight **OK**, and then press button. The player verifies the network connection and then connects to the network.



## I For Wireless Networks

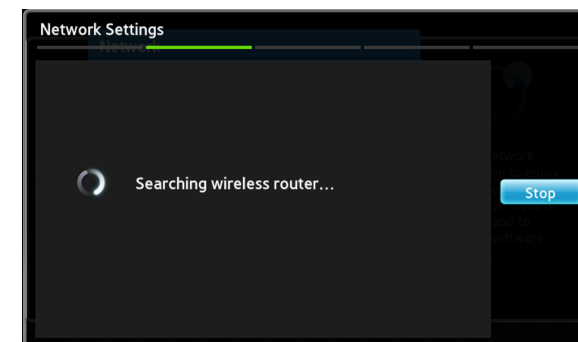
- 1** Make sure the access point you want to connect your player to is turned on. The access point can be a wireless router, modem, etc.

- 2** Select **Start** in the Network Settings menu, and then press the button.

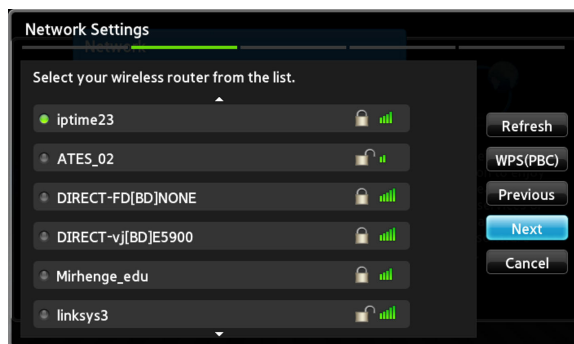
<Start> is highlighted automatically.



- 3** Press the button. Your player starts scanning for access points. When done, it displays a list of access points it has found.

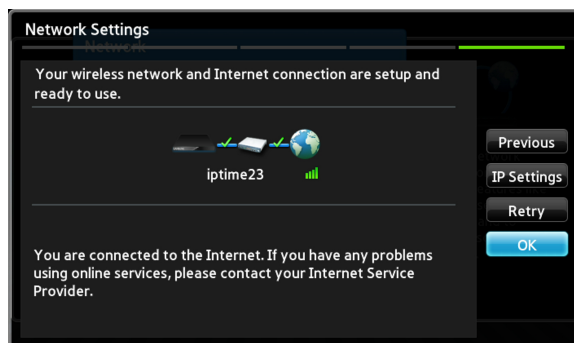


- 4** Move to the access point you want to connect your player to, and then press the button. **<Next>** is highlighted automatically.



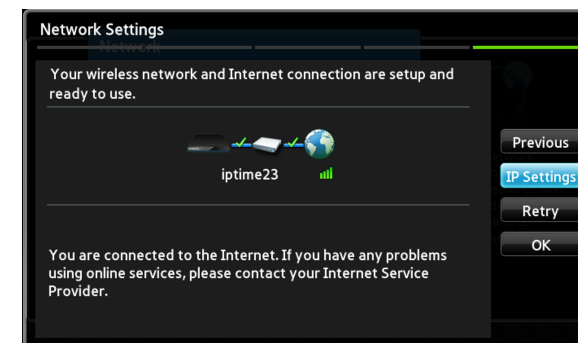
- 5** Press the button. The player connects to your network.

- If your network has the Enter Security Key window appears. Use the keyboard to enter the key. When done, use the buttons to select **Next**, press the button, and then go to Step 6.

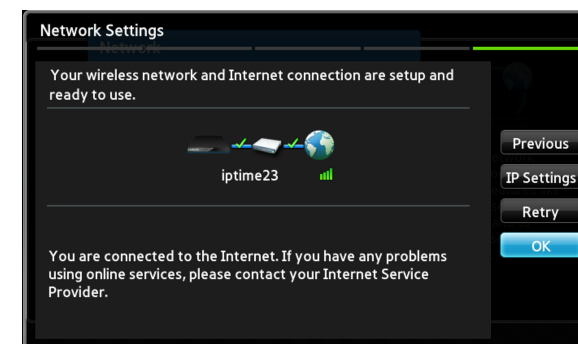


- 5-1** If you want to use a fixed IP address, select **<IP Settings>** on the screen, and then enter the required IP address settings manually.

- IP Address
- Subnet Mask
- Gateway
- DNS Server



- 6** After you have finished configuring the network settings, press the **<OK>** button.



**When using a device that supports WPS**

1. Perform steps 1 to 5 in "Configuring Your Network Connection: First Steps".
2. Select "WPS(PBC)".
3. Follow the instructions displayed on the screen.

**Notes**

- Devices that support WPS have a WPS (PBC) button.

# Installing and Using AllShare Software on Your PC

## I To Download the AllShare Software

To use AllShare with your PC or DLNA device, you must install AllShare software on your PC.

You can download the AllShare software and get detailed instructions for using AllShare from the Samsung.com website.

**1** Go to [www.samsung.com](http://www.samsung.com).

---

**2** Click Support at the top of the page.

---

**3** On the Support page, enter the model number of your player into the Model Number field, and then click the Find Product button.

---

**4** On the page that appears, click Get downloads on the left side under Downloads. The Download Center appears.

---

**5** On the Download Center page, click the Software tab.

**6** On the software tab, click the File icon on the right side of the AllShare line.

---

**7** In the pop-up that appears, click Save File.

---

**8** Find the AllShare install file on your disk, and then double click the file.

---

**9** In the pop-up that appears, click Run, and then follow the directions that appear on your screen.



## AllShare Installation

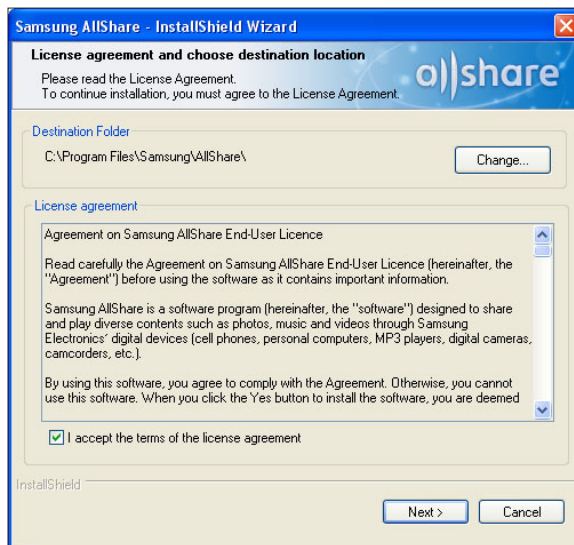
To install the AllShare software follow these steps.

**1** After downloading the AllShare software, launch the installer.

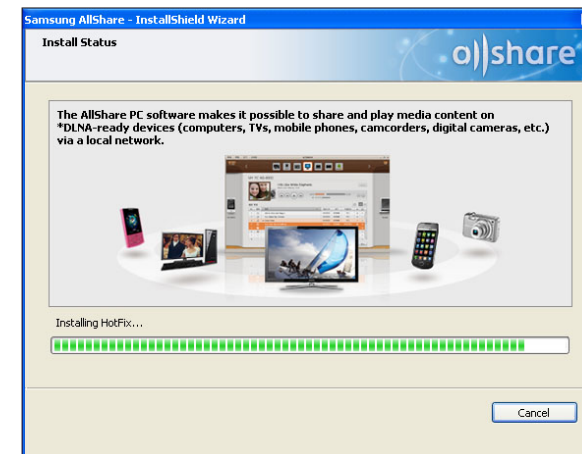
**2** Select the language of your choice, and then click "OK"



**3** Review the installation location for the software and the license agreement, if you agree, select "I accept the terms of the license agreement", and then click "Next".



**4** The files required for running the software are installed.



**5** When the installation is complete and the shortcuts have been created, select whether or not to launch the software, and then click "Finish" to finish installation.

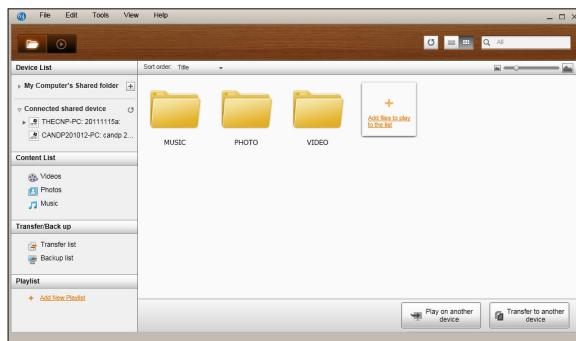


## I AllShare Screen Layout

There are three screens in the AllShare software.

### File Management Screen

To go to the File management screen, either select **View > File management screen mode** in the top menu or click the **File management screen mode** button.



#### A. Browsing area

- Connected shared device : Shows shared content on devices that are connected to your computer (identified as My Computer on the screen).
- Content list : Shows content by video/photo/music category.
- Transfer/Back up list : Shows the progress/completion status for transfer and backup.
- Playlist : Create and play a customized playlist of songs, photos, or videos.

#### B. Content list area

- Shows the content of the list you selected in the browsing area.

#### C. Play on another device/Transfer to another device/Save to My Computer buttons

- Play on another device : Brings up the selection screen for the device you want to play the selected content on.
- Transfer to another device : Brings up the selection screen for the device you want to transfer the selected content to.
- Save to My Computer : Brings up the selection screen for the folder you want to save the selected content to.

#### D. Additional features

- Refresh : Refreshes the entire list.
- List view/Thumbnail view : Click to change the list view method.
- Search : Searches the content within the Content list area.

#### E. Player control screen mode

- Switches to Player control screen mode.

# Connect To The Player And Other DLNA Compatible Devices

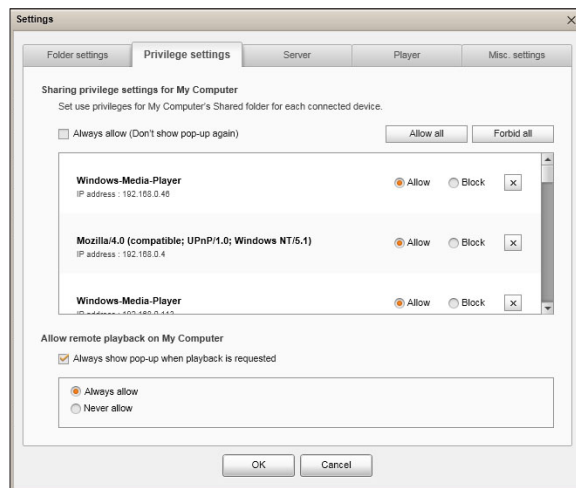
Before you are able to connect to any device, you must have your computer connected to your home network.

## Notes

- If you are having trouble connecting to your home network, please contact your network administrator or ISP/Router provider.
- If you are having problems connecting to a DLNA device (For example : A mobile phone), please consult the user manual of that device.

## I Allowing A Connected Device Access

- 1 Go to **Tools > Settings > Privilege settings** tab.



- 2 In Privilege settings for My Computer, set up the sharing privileges that each connected device has with the My Computer shared folder.

- If you select Always allow, devices can use the shared content on My Computer the first time they request access without generating a pop-up notification.
- Allow all/Forbid all : Allows/forbids access privileges for all currently connected devices.
- You can set access privileges for each device by selecting allow/block, located next to each connected device in the list.
- To remove a device from the list, click the  button next to the device.

- 3 In Allow remote playback on My Computer, set the remote playback rules for devices accessing My Computer.

- "Always show pop-up when playback is requested": When selected, AllShare will display playback requests from other devices to My Computer in a pop-up.
- Always allow : When another device sends a playback request to My Computer, playback is granted without a pop-up notification.
- Never allow : Devices cannot playback on My Computer.

## Adding Shared Folders

You can add a shared folder by doing one of the following:

- On the File Management screen, click the Shared Folder button at the top of the Device List on the left side, select a folder you want to share from the list that appears, and then click OK.
- Click **File > Add shared folder from My Computer**, select a folder you want to share from the list that appears, and then click OK.
- Click **Tools > Settings > Folder Settings > Add Shared Folder**. Select a folder from the list that appears, and then click OK on the list, and then again on the Folder Settings tab.

### Add a File To My Computer's Shared Folder

You can add a file to a shared folder by doing one of the following:

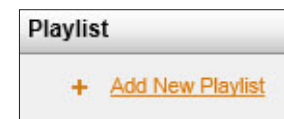
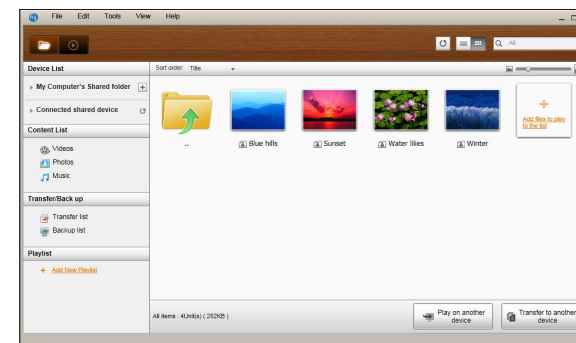
- On the File Management screen, in the **My Computer's Shared Folder** on the right side, click **Add files to play to the list**. In the file window that appears, select files you want to share, and then click **Open**. In the window that appears next, click Copy, Move, or Cancel. If you click Copy or Move, the files appear in the File Management screen.
- On the **File > Add File to My Computer's Shared Folder**. In the file window that appears, select files you want to share, and then click **Open**. In the window that appears next, click Copy, Move, or Cancel. If you click Copy or Move, the files appear in the File Management screen.

### Add From Windows Explorer

From Windows Explorer, select the folder/file you want to share and drag it into My Computer's shared folder/Content list area on the File management screen to add the shared folder/file.

## Create A Playlist In AllShare

- Add playlist : Click on **Add new playlist** next to Playlist, and enter a name for the playlist.
- Play on another device : Right-click on the playlist you want to play, and hold the mouse cursor over **Play on another device** to select the device you want to play the playlist on.
- Rename a playlist : Right-click the playlist you want to rename, and then click **Rename** to rename the playlist.
- Delete a playlist : Right-click the playlist you want to delete, and then click **Delete** to delete the playlist.
- Add content to a playlist : To add content to a playlist, select the list that contains the content you want to add to the playlist In the Navigation area's **Device List/Content List**, select the content from the Content List area, and then drag the content to the playlist.
- Remove content from a playlist : Select the playlist that contains the content you want to remove, select the content to remove in the Content list area, and then either right-click the content and click **Delete** or press the Delete key to remove the content.  
(Removing content from a playlist does not delete it from the Device List or the Content List.)



## Selecting a Device on Your Player's AllShare Play Screen

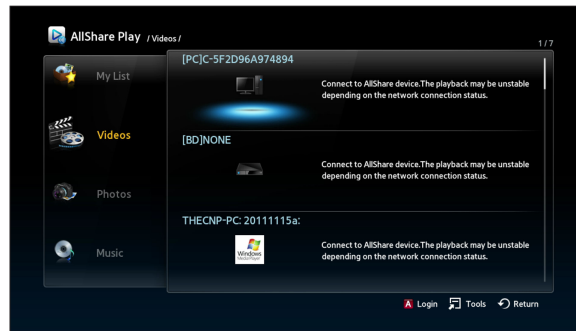
- 1 Connect the desired devices to your wired/wireless network.

---

- 2 Select **AllShare Play** on the Blu-ray Disc Player's HOME screen and then select the contents you want to play (Videos, Photos, or Music).

---

- 3 On the right side of the screen, select the device that contains the content you want to play.



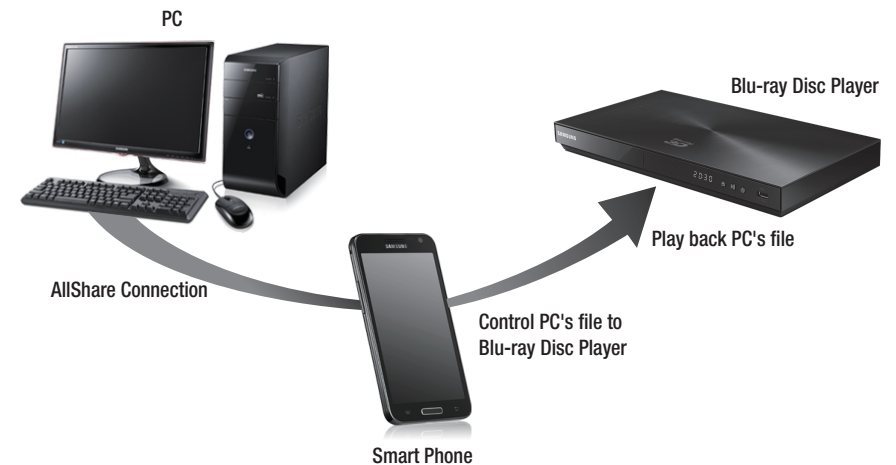
### Notes

- Even if AllShare is not installed, DLNA devices can be connected and can appear on your player's **AllShare Play** screen. (They must be connected to the network first.)
- Devices not compatible with Samsung devices can not be connected.

## Playing Blu-ray Disc Player with Other Devices

### Smart Phone connects to a PC to play a file through a Blu-ray Disc Player

Use your Smart Phone to view files stored in your computer, and then play a selected file through your Blu-ray player on your TV.  
(Only available with Samsung phones supporting AllShare functionality.)



- 1 Connect your computer, Smart Phone and the Blu-ray Disc Player to your wired/wireless network.

---

- 2 Run the AllShare program on your computer.

**3** Run the AllShare program on your phone and connect it to your computer. (Caution: You need the computer's name.)

---

**4** On your computer, confirm the connection to your phone.

---

**5** Once connected, you can view shared files from your computer on your phone.

---

**6** Select the desired file from the shared list, and then select the device for playback (Your Blu-ray Disc Player).

---

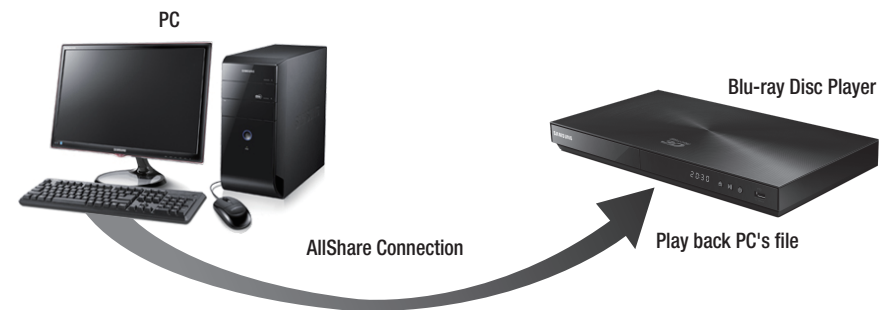
**7** Confirm your Blu-ray player is playing back the file.

## I Play Video Files From My Computer On Your Player

Do you want to watch a movie through the player with your family on your TV, instead of watching it alone on your PC?

Try using AllShare to move your content to the player.

Add content or a shared folder containing the content you want to play.




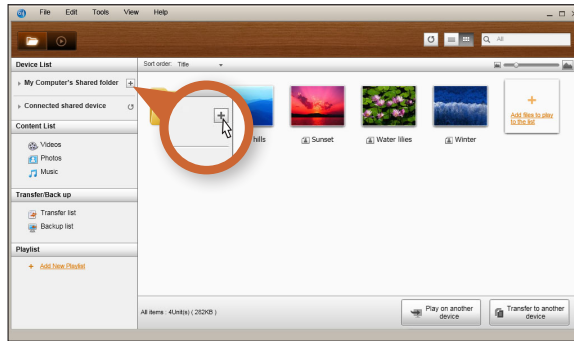
**1** Turn on the player.

---

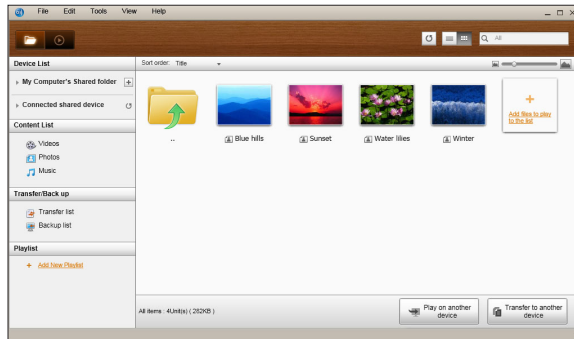
**2** Run the AllShare PC software.

**3** If the folder containing the video you want to play is not shared, click the button next to "My computer's shared folder" to add the shared folder.

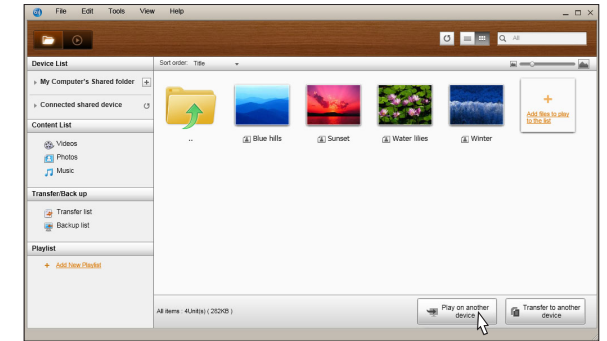
 If there are a large number of files, recreating the list may take a long time.



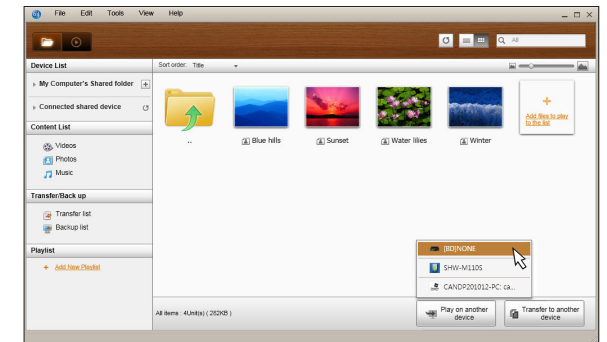
**4** In the Content list, select the video you want to play.




**5** Click on the "Play on another device" button.

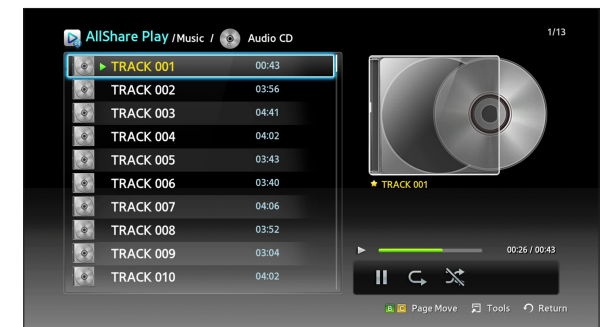


**6** Select the device you want to play the content on or through (your Blu-ray player).

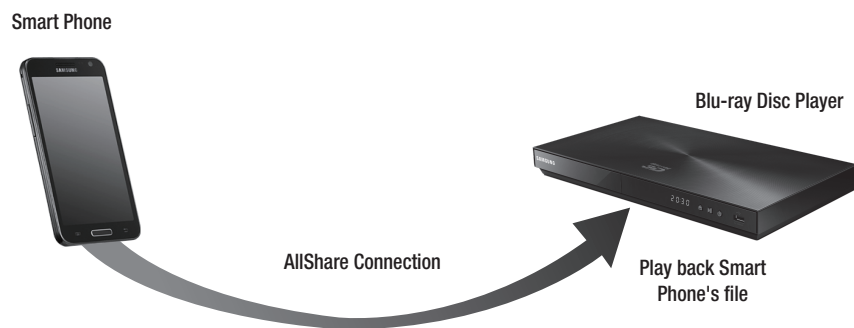


**7** When video buffering is complete, the video will play through the player and appear on your TV.

 Make sure you have set your TV to the source you've connected the Blu-ray player to.



## I Play Video Files From My Smart Phone On Player



- 1 Connect a Smart Phone and the Blu-ray Disc Player to your wired/ wireless network.

---

- 2 Select **AllShare Play** in the Blu-ray Disc Player's HOME menu.

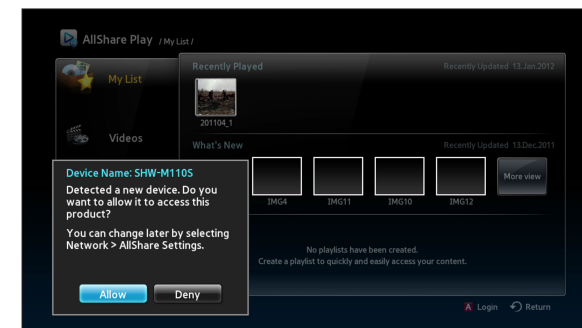
---

- 3 Start the AllShare app on your Smart Phone. In AllShare, select the menu **Play file from my phone on another player**.

---

- 4 Select the contents (Video, Photo, or Music) you want to play. And select device to play media clip on.

- 5 Once connected, you can view pop-up message to allow on your Blu-ray Disc player.



- 6 Select **Allow** in the pop-up message, and then press the button.

### Notes

- <Allow> is highlighted automatically.
- This function is not supported if AllShare is not installed on the Smart Phone.



## Q&A

I just installed AllShare on my computer, but can't find my computer on the AllShare app on my player.

- Make sure your player and computer are plugged in and that the connections are secure.
- Make sure all the network cable connections (router to computer, router to modem, etc.) are plugged in and secure.
- Confirm that the player is connected to your network and that the player's network configuration is correct.
- Make sure the player and computer have been allocated proper IP addresses.
- Confirm that your player and computer are connected to the same network segment. Compare the first three sets of digits in the IP addresses. They should be the same.
- Make sure you've set the player to Allowed on the PC's Allshare Privilege settings tab (Tools > Settings > Privilege settings).
- Some firewall applications running on your computer, such as McAfee and Norton AntiVirus, may block AllShare operations and the player's access to the computer. Stop such programs or set them to allow AllShare applications access to the computer.

I cannot find my Blu-ray Disc Player's IP address in the permission setting menu of AllShare PC software.

- Confirm that the player is connected to your network and that the player's network configuration is correct.
- Make sure the player and computer have been allocated proper IP addresses.
- Confirm that your player and computer are connected to the same network segment. Compare the first three sets of digits in the IP addresses. They should be the same.
- Confirm that the player and your PC are connected to the same router.
- With some router models or router configurations, the player may not be recognized. Check whether the router supports multicasting. If it does, check the router's multicasting configuration.

I cannot find media contents even when the file is set to share on my computer.

- AllShare does not support all file formats for sharing. Files in formats AllShare does not support will not be displayed on your computer screen even if they are shared on your computer.
- You cannot view files other than movies, photos and music.

Subtitles appear properly when I play back a video from a USB device, but they do not appear when I play back using AllShare and the PC connection.

- Confirm that the subtitle file has the same name as the movie file (Ex: Edge\_City.mp4 and Edge\_City.srt) and that the two files are located in the same folder.
- Note that this function is supported only by Samsung products compatible with AllShare. This function is not supported if the Smart Phone you are using is not a Samsung product.