

Quick Start

MOTOROLA ATRIX™ 2



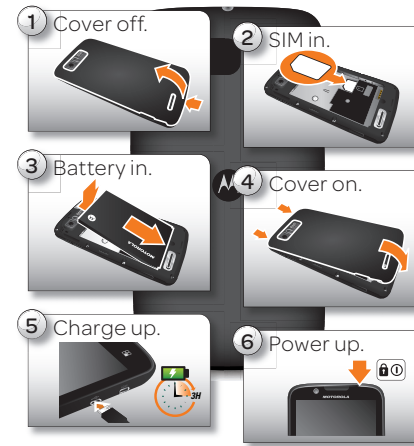
Your Phone

Caution: Before assembling, charging, or using your phone for the first time, please read the important safety, regulatory and legal information provided with your phone.



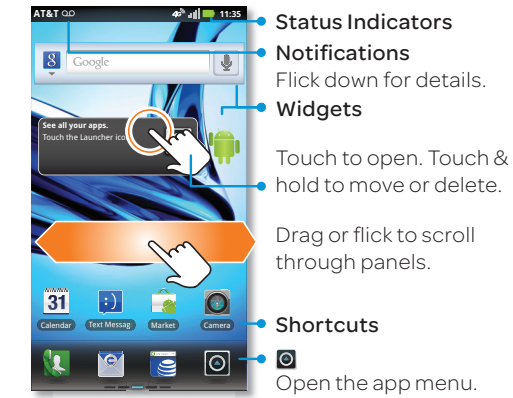
Get Started

Note: This phone supports apps and services that use a lot of data, so make sure your data plan meets your needs. Contact your service provider for details.



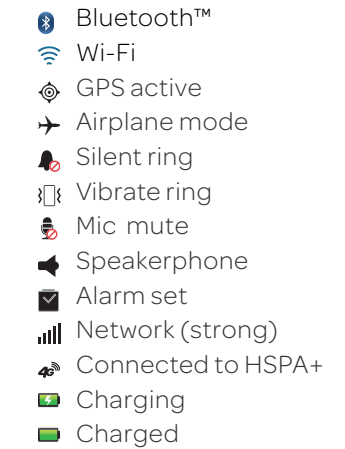
Home Screen

You'll see the home screen when you turn on the phone or **touch** Home (Home icon) from a menu:



Phone Status & Notifications

At the top of the screen, icons on the left notify you about new messages or events (flick the bar down for details). Icons on the right tell you about phone status:



Find More Information

- On your phone—Touch > **Help Center**.
- On any phone—Call AT&T Customer Care at 1-800-331-0500 or dial 611 from any AT&T mobile phone for assistance with your service or device.
- On the web—You can also get support online:

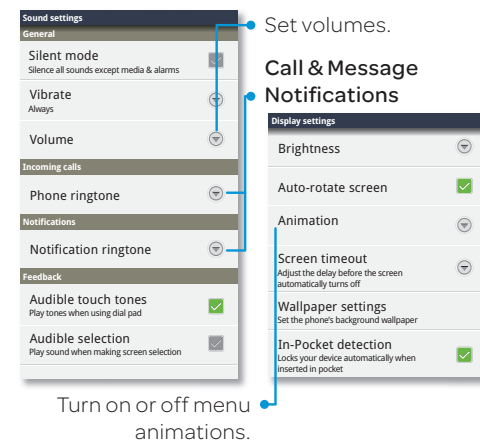
Interactive web tutorials are available at att.com/Tutorials. Select Manufacturer: Motorola and Model: **ATRIX 2** from the drop-down menus.

For detailed support information including device specifications, the user manual, troubleshooting, user forums and knowledgebase articles, go to att.com/DeviceSupport

For information about your wireless account, service plan or network, go to att.com/Wireless

Personalize

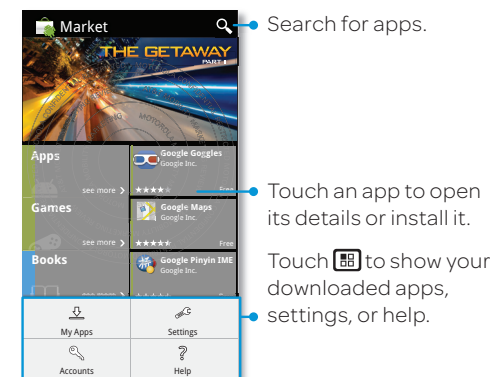
Find it: Menu > **Settings** > **Sound or Display**.



Apps

Find it: > **Market**.

Tip: For quick access to **Market**, just touch to open the app menu, then touch in the top right.



Calls

Find it: **Dialer**

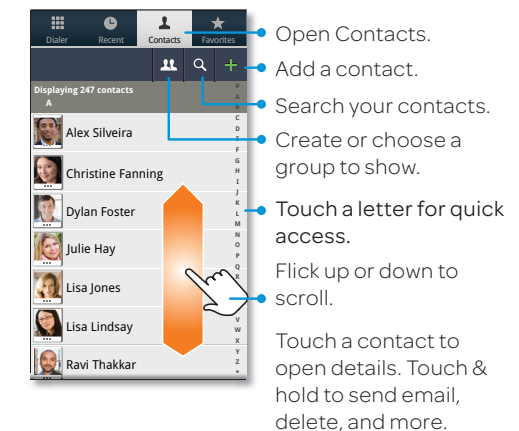
To access voicemail, touch and hold **1**.

Tip: For help setting up your voicemail, call 611 from your device.



Contacts

Find it: **Dialer** > **Contacts**



Social Networking

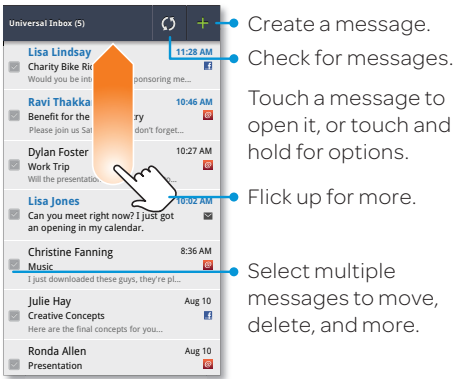
Find it: > **Accounts > Add account**

Add your social networking accounts, then add a widget: Touch and hold an empty spot on your home screen and choose **Widgets > Social Networking**.



Text Messaging & Email

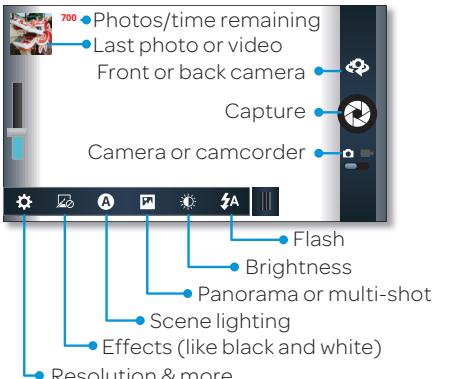
Find it: > **Messaging > Universal Inbox**



Please Don't Text and Drive.

Photos & Videos

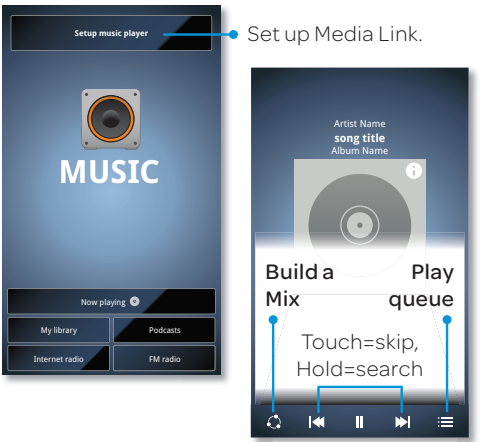
Find it: > **Camera** or **Camcorder**



Music

Find it: > **Music**

Tip: To transfer files with a USB cable, connect your phone to your computer and follow prompts to open Media Link.



AT&T Features & Services

- **AT&T Navigator®**—Get voice-guided, turn-by-turn, GPS-enabled directions. It is the fastest way to get where you are going—whether across town or across the country.
- **AT&T Code Scanner**—AT&T Code Scanner reads UPC, QR and Data Matrix barcodes that you find on products, in ads or on-line, allowing you to compare prices, reviews, web sites, videos, coupons or learn more about products.
- **U-verse TV**—Watch LIVE, on-demand & downloadable mobile TV including ESPN Mobile TV, Fox News and more.

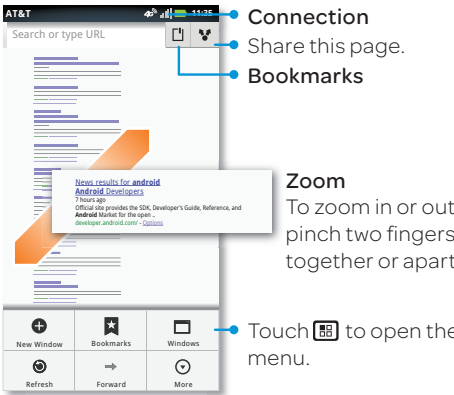
Data usage and subscription charges may apply.

For information on setting up or using these services, visit att.com/Tutorials. To add these services, contact your local AT&T store or call 1-800-331-0500.

Browser

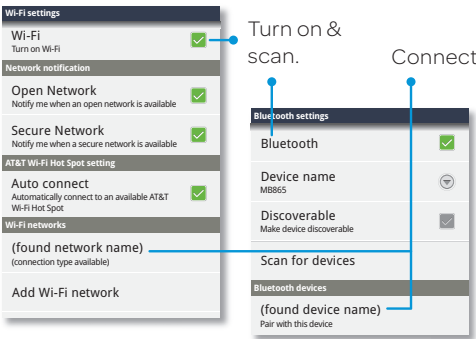
Find it: > **Browser**

Tip: From the home screen, just touch Search and enter a Web address or search term.



Wireless Connections

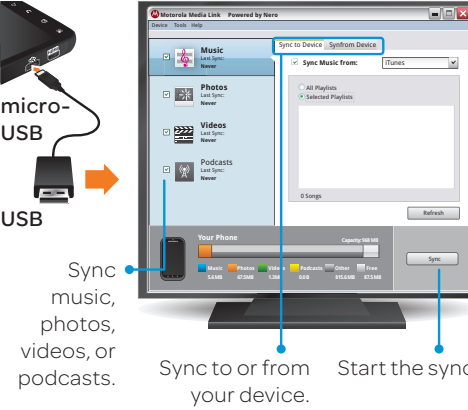
Find it: Menu > **Settings > Wireless & networks > Bluetooth settings** or **Wi-Fi settings**



File transfer

Your phone can store files on a microSD memory card, to play or transfer them.

Find it: Connect your phone to your computer with a USB cable, then follow prompts to open Media Link:



Certain features, services and applications are network dependent and may not be available in all areas; additional terms, conditions and/or charges may apply for voice, messaging, data, and other services. Contact AT&T Mobility for details. 4G speeds delivered by HSPA+ with enhanced backhaul. Not available everywhere. Deployment ongoing. Compatible device and data plan required. Learn more at att.com/network. All features, functionality, and other product specifications, as well as the information contained in this guide, are based upon the latest available information and believed to be accurate at the time of printing. Motorola reserves the right to change or modify any information or specifications without notice or obligation. **Note:** The images in this guide are examples only. MOTOROLA and the Stylized M Logo are trademarks or registered trademarks of Motorola Trademark Holdings, LLC. Google, the Google logo, Google Maps, Google Talk, Google Latitude, Gmail, YouTube, Picasa, Google Books, Google Docs, Google Goggles, Google Finance, Google Places, Google Maps Navigation Beta, Google Calendar, Android, Android Market, and other marks are trademarks of Google, Inc. AT&T, the AT&T logo and all other AT&T marks contained herein are trademarks of AT&T Intellectual Property and/or AT&T affiliated companies. All other product or service names are the property of their respective owners. Portions ©2011 Motorola, Mobility Inc. Portions ©2011 AT&T Intellectual Property. All rights reserved. Product ID: MOTOROLA ATRIX™ 2 (Model MB865) Manual Number: 68016169002 -A