

## WELCOME

MOTOROLA ELECTRIFY™ keeps you connected, whether you're at home, work, or play.

Capture life's moments in HD video, or take crisp, vivid pictures with the 8 megapixel camera. Surf the web or stream video on the large 4.3 inch screen. Social networking at your fingertips. Follow family, friends, and work colleague's posts, texts, emails, all in one place.

**Note:** Certain apps and features may not be available in all countries.



## YOUR PHONE

Most of what you need is in the touchscreen and four simple keys on the front:

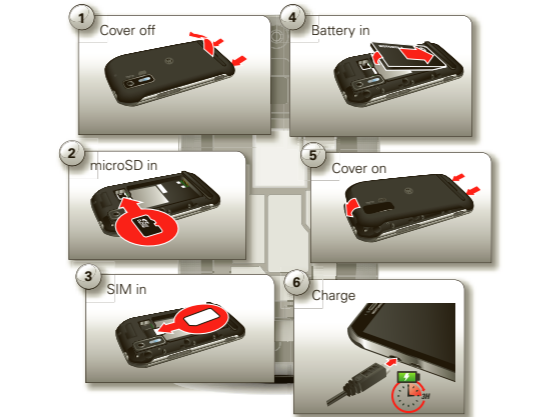
- **Menu:** Open menu options.
- **Home:** Go to the home screen and apps menu.
- **Back:** Go back one screen.
- **Search:** Touch for text search, or hold for voice search.



## START

Let's get you up and running.

**Caution:** Before assembling, charging, or using your phone for the first time, please read the important legal and safety information packaged with your product.



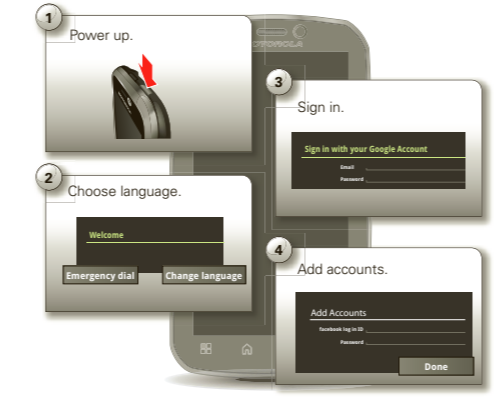
## REGISTER

The first time you turn on your phone, a setup wizard guides you through signing in to your Gmail™ account.

If you don't have one, don't worry, the wizard will help you create one.

After you log in to Gmail, you can set up social networking, or you can do it later.

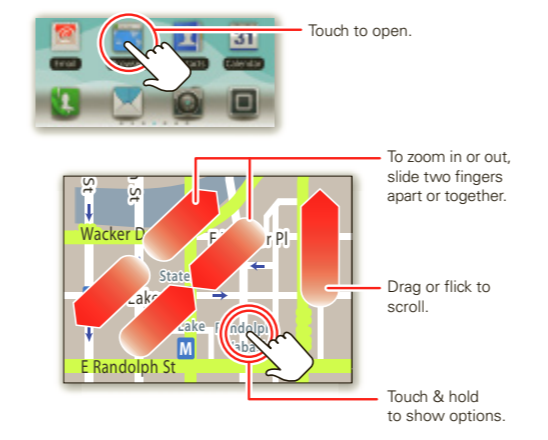
**Note:** This phone supports apps and services that use a lot of data, so make sure your data plan meets your needs. Contact your service provider for details.




## TOUCH TIPS


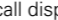
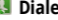
It's all in the touch:

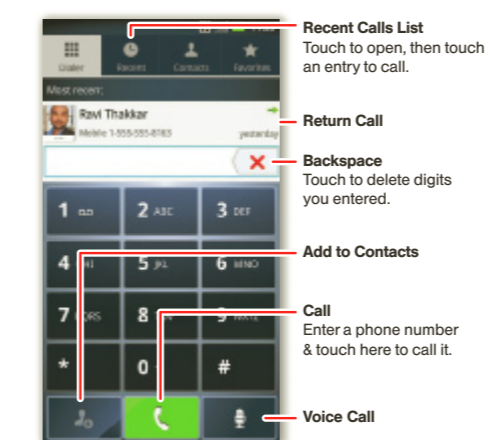
- **Touch:** Choose an icon or option.
- **Touch & Hold:** Open options.
- **Drag:** Scroll or move slowly.
- **Flick:** Scroll or move quickly.
- **Pinch-to-zoom:** Get a closer look at Google Maps™, web pages, or photos.




## CALLS

Your dialer and call lists are just a touch or two away—no menus needed. Just touch  **Dialer** in the home screen.

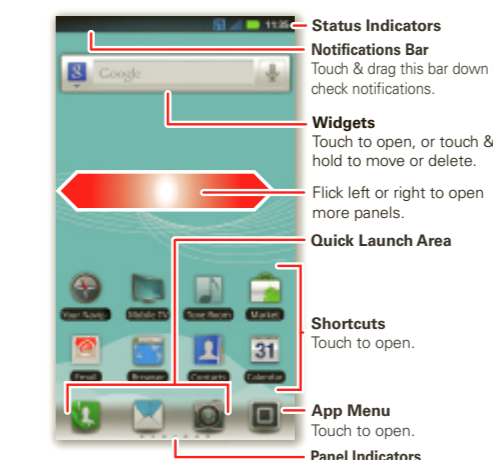
**Tip:** During a call, touch Home  or Back  to hide the active call display and use other apps. To reopen it, touch  **Dialer**.



## HOME SCREEN


The *home screen* gives you all your latest information in one place. It's what you see when you turn on the phone or touch Home .

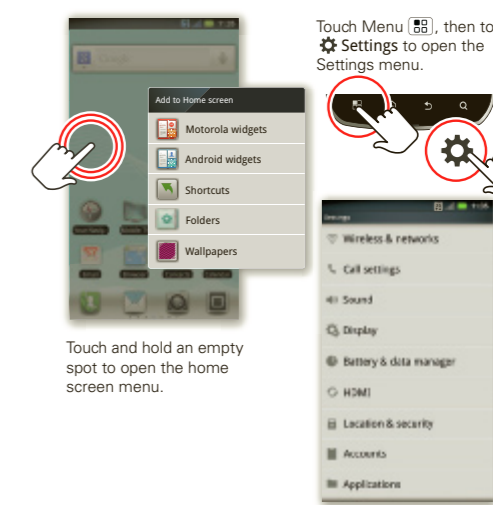
Use the widgets, shortcuts and panels to see what's important to you. To make the home screen yours, see "**PERSONALIZE**".



## PERSONALIZE

Go ahead, add your personal touch. Change your widgets, wallpaper, ringtone, and more—make it yours.

- **Home screen:** To add something or change your wallpaper, touch and hold an empty spot until you see the **Add to Home screen** menu.
- **Ringtones & sounds:** Touch Menu  > **Settings** > **Sound** > **Phone ringtone** or **Notification ringtone**.



Certain features, services and applications are network dependent and may not be available in all areas; additional terms, conditions and/or charges may apply. Contact your service provider for details.

All features, functionality, and other product specifications, as well as the information contained in this guide, are based upon the latest available information and believed to be accurate at the time of printing. Motorola reserves the right to change or modify any information or specifications without notice or obligation.

**Note:** The images in this guide are examples only. MOTOROLA and the Stylized M Logo are trademarks or registered trademarks of Motorola Trademark Holdings, LLC. Google, the Google logo, Google Maps, Google Talk, Google Latitude, Gmail, YouTube, Picasa, Google Books, Google Docs, Google Goggles, Google Finance, Google Places, Google Maps Navigation Beta, Google Calendar, Android and Android Market are trademarks of Google, Inc. All other product or service names are the property of their respective owners.

© 2011 Motorola Mobility, Inc. All rights reserved.  
Product ID: Motorola Electrify (Model MB853)  
Manual Number: 68016303001-B

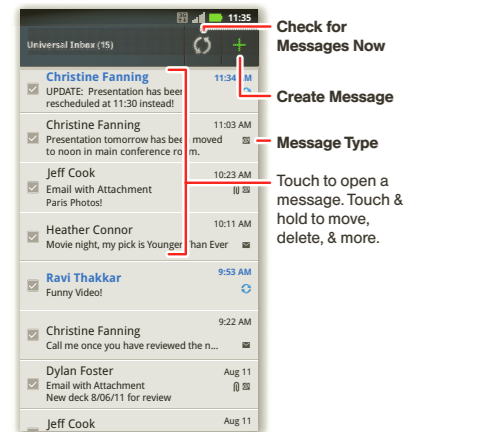


## MESSAGES

All your messages in one place—text, IM, email, Facebook™, and more. Touch > **Messaging** > **Universal Inbox**.

**Tip:** To type in a message, touch a text field to open the touchscreen keypad.

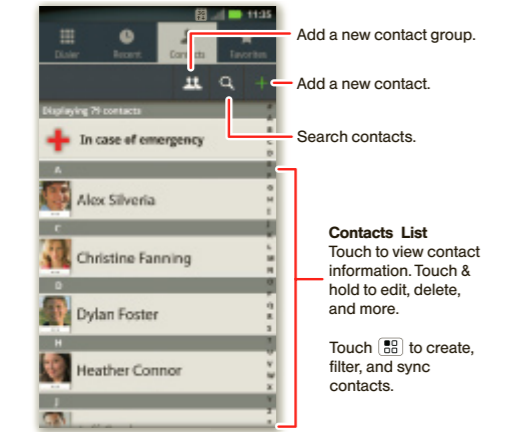
To add email accounts, touch > **Accounts** > **Add account**. Choose **Corporate Sync** for Microsoft™ Exchange work email (for settings, ask your IT administrator) or **Email** for most other accounts (for settings, ask the account provider).



## CONTACTS

Now you have contacts like you've never had before. View, search, and use them your way. Just touch > **Contacts**.

**Tip:** When you flick or drag this list, a scroll bar appears on the right. Drag the scroll bar to move the list faster. To search the list, just touch Search and type a name.



## MY CONTACTS BACKUP

My Contacts Backup is a free service, so if your phone is lost or stolen, you can easily transfer your numbers to a new phone.

### SET UP MY CONTACTS BACKUP

1 Touch > **MyContactsBackup**, and accept the terms and conditions to proceed.

2 Enter your PIN. If you're using My Contacts Backup to download contacts backed up on another phone, use your existing PIN.

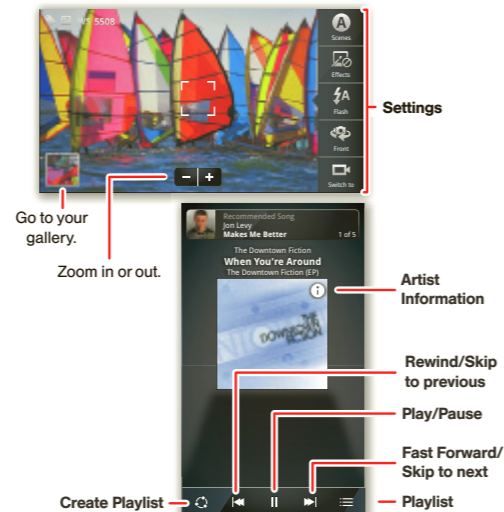
3 If you have existing contacts stored online, you'll be prompted to download them. If not, you'll be prompted to backup any contacts stored on your phone.

**Tip:** You can use your phone number and PIN to log into your account at [www.mycontactsbackup.uscellular.com](http://www.mycontactsbackup.uscellular.com) to add and edit your contacts online.

## MEDIA

See it, capture it, share it! Then, relax with some music.

- **Photos:** Press Camera . To take the photo, press Camera again.
- **Videos:** Touch > **Camcorder**. To record the video, touch . To stop recording, touch .
- To see the photos and videos you've taken, touch > **Gallery**.
- **Music:** Touch > **Music** to open your music library and select what you want to play.



## WEB & MAPS

Browse, download, and search (of course). Find where you are or where you're going.

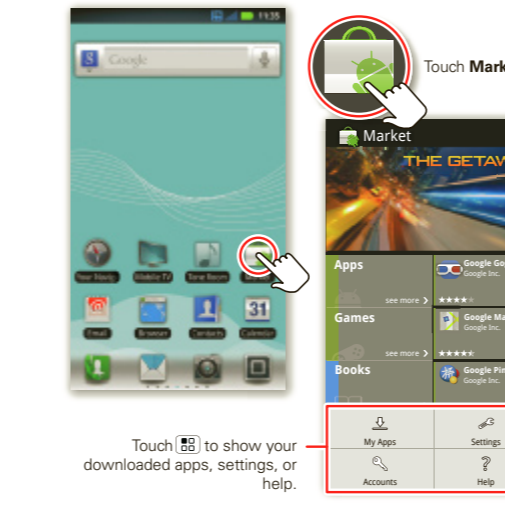
- **Browser:** Touch > **Browser** and surf using the super fast 3G and Wi-Fi connections.
- **Google Maps™:** Touch > **Maps** to use the Google Maps you know and love.



## APPS

All your apps, all together:

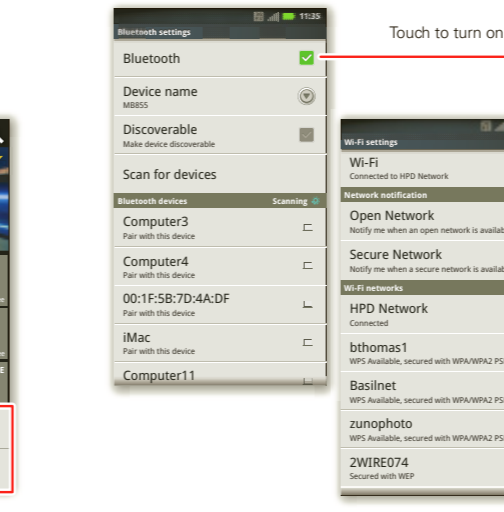
- **Menu:** To open the app menu, touch in the home screen. To close the app menu, touch Home .
- **Search:** In the app menu, touch Search to open a keypad, then type the app name.
- **More:** Touch > **Market**.



## WIRELESS

Lose the wires—touch Menu > **Settings** > **Wireless & networks**.

- **Bluetooth™:** For handsfree calls and wireless music, touch **Bluetooth settings** and connect to your accessory.
- **Wi-Fi:** For fast internet access, touch **Wi-Fi settings** and connect to a home, office, or hotspot network. For connection details, touch Menu > **Advanced**.



## YOUR NAVIGATOR DELUXE

With **Your Navigator Deluxe**, get all of the features of an advanced, GPS-enabled voice turn-by-turn car navigation system on your phone. Search for any destination including gas stations, ATMs, restaurants, and more. Get detailed maps of any location. Touch > **Your Navigator Deluxe**

**Note:** Before using **Your Navigator Deluxe**, turn on the location and GPS features. Touch Menu **Settings** > **Location & security**, and turn on **Use wireless networks** and **Use GPS satellites**.

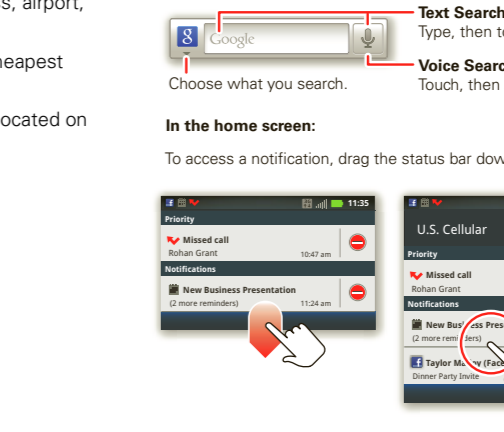
From the You Navigation Deluxe home screen you can select:

- **Drive To** for turn by turn direction to an address, airport, contacts addresses and more
- **Places** to search for nearby businesses, the cheapest gas prices and more
- **Maps & Traffic** to see where you currently are located on a map and what traffic is in the area

## TIPS

Here are some good things to know:

- **Sleep/wake phone:** Press Power/Lock .
- **Set screen timeout:** Touch Menu > **Settings** > **Display** > **Screen timeout**.
- **See Recent Apps:** Touch and hold Home .
- **Turn Sound On/Off:** Press and hold Power/Lock > **Silent mode**.
- **Search:** Touch Search .



## MORE

Want more? You got it:

- **Answers:** Touch > **Help Center**.
- **Support:** Phone updates, PC software, user guides, online help and more at [www.motorola.com/myelectrify](http://www.motorola.com/myelectrify).
- **Accessories:** Find optional accessories for your phone at [www.motorola.com/products](http://www.motorola.com/products).
- **Load and transfer files:** Download Motorola Media Link at [www.motorola.com/medialink.com](http://www.motorola.com/medialink.com)
- **Social:** The latest news, tips & tricks, videos and so much more—join us on:

- **YouTube™** [www.youtube.com/motorola](http://www.youtube.com/motorola)
- **Facebook** [www.facebook.com/motorola](http://www.facebook.com/motorola)
- **Twitter** [www.twitter.com/motomobile](http://www.twitter.com/motomobile)

**SAR** This product meets the applicable limit for exposure to radio waves (known as SAR) of 1.6 W/kg (FCC). The limits and guidelines include a substantial safety margin designed to assure the safety of all persons, regardless of age and health. The highest SAR values measured for this device are listed in the regulatory information packaged with your product.