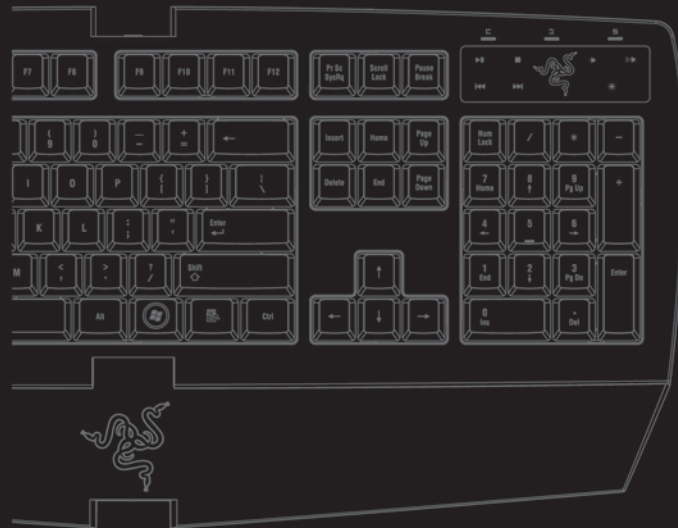




TM

RAZER™

LYOSA™
GAMING KEYBOARD



MASTER GUIDE



CONTENTS

- 02 Introduction
- 03 Package Contents
- 03 System Requirements
- 04 Installation / Registration / Technical Support
- 06 Key Features
- 08 Configuring Your Razer Lycosa™
- 12 Using Your Razer Lycosa™
- 14 Advanced Setting Guide
- 14 Safety And Maintenance
- 16 Legalese
- 18 FCC Declaration of Conformance
- 19 WEEE information



Congratulations on purchasing your very own Razer Lycosa™ Gaming Keyboard – a highly-customizable gaming keyboard engineered to suit the needs of every gamer. With awesome functions such as programmable non-slip Hyperresponse™ keys and backlighting options, it is the keyboard of choice for optimizing the gaming experience.

Razer Lycosa™ Gaming Keyboard
USB 1.1/2.0 compatible keyboard for Windows® XP / x64 / Vista / Vista64

Note: While the Razer Lycosa™ is designed to give you an edge over your opponents, it is not intended for automated gameplay.

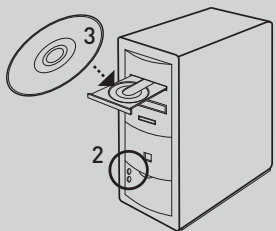
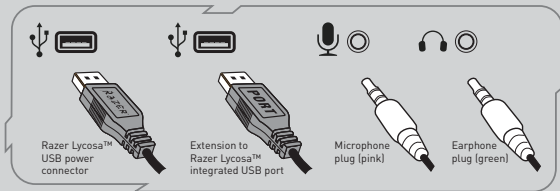
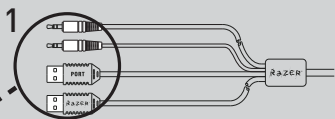
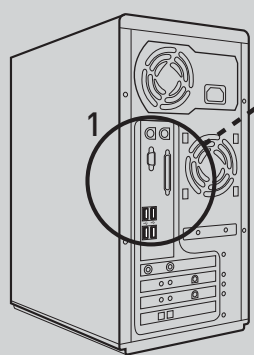
PACKAGE CONTENTS

- Razer Lycosa™ Gaming Keyboard
- Quick Start Guide
- Master Guide with Driver CD
- Certificate of Authenticity
- Catalog
- Sticker

SYSTEM REQUIREMENTS

- PC with built-in USB, earphone-out and microphone-in ports
- Windows® XP / x64 / Vista / Vista64
- CD-ROM drive
- 35MB of free hard disk space

INSTALLATION / REGISTRATION / TECHNICAL SUPPORT



Windows® XP / x64 / Vista / Vista64 Installation Instructions

1. Plug your keyboard into the USB port of your computer.
2. Insert the Razer™ driver CD into your CD-ROM drive.
3. The Razer Lycosa™ setup screen appears. Click NEXT.

4. Read the license agreement. Click YES if you accept all terms of the agreement.
5. Select the destination folder where the driver software will reside. Click NEXT.
6. Select the program folder for the Razer™ menu. Click NEXT.
7. Review your settings. Click NEXT and installation will begin.
8. At the end of the installation, there will be an option to register your Razer Lycosa™. Click REGISTER to do so.
9. When the registration is complete, follow the instructions onscreen to restart your computer. Click FINISH.

REGISTER YOUR RAZER LYCOSA™

At the end of the Razer™ software installation, just follow the prompts onscreen or get instant gratification at www.razerzone.com/registration/.

What you'll get:

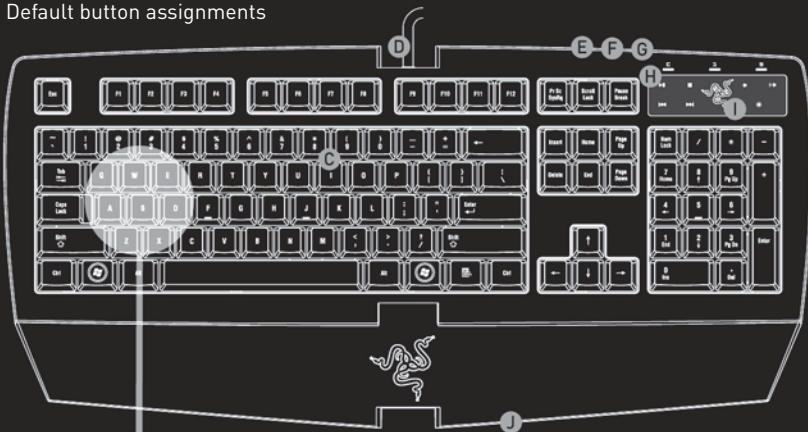
- One years' limited manufacturer's warranty
- Free online support

TECHNICAL SUPPORT

For technical support and the latest drivers and firmware, please visit www.razersupport.com.

KEY FEATURES

Default button assignments



GAMING CLUSTER
with anti-ghosting capability
+
WASD CLUSTER LIGHTING

- A Gaming cluster with anti-ghosting capability
- B WASD cluster lighting
- C Non-slip Hyperresponse™ keys
- D 1000Hz (1ms) response time
- E Microphone-in
- F Earphone-out
- G USB compatible port
- H TouchPanel™ media keys
- I Profile key
- J Detachable wrist rest



TOUCHPANEL™ media keys



- ▶▶ Play / Pause – Plays/pauses media files
- Stop – Stops media files
- ◀◀ Previous Track – Returns to previous track
- ▶▶ Next Track – Skips current track
- ▾ Volume down – Reduces volume
- Volume up – Increases volume
- ★ Lighting – Toggles between 3 lighting modes: ON, OFF, WASD cluster
- 🐍 Razer Logo – Switches profiles with F1 - F10

CONFIGURING YOUR RAZER LYCOSA™

DRIVER CONTROL OVERVIEW



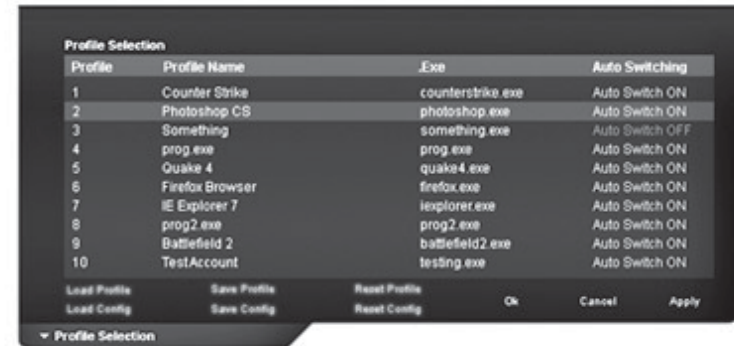
Profile Selection Menu

Changes the currently active profile.
Click the Profile Selection tab and choose the desired profile from the menu.

Profile Settings

- Profile: Indicates the profile number.
- Profile Name: Double-click this field to enter a profile name of your choice.
- .Exe: Double-click this field to open up directory browsing. Select the executable file of the program you want the profile to be tied to.
- Auto Switching: Click this field to switch to this profile when the application is loaded.
- Load/Save/Reset Profile: Click each button to customize your profiles accordingly.
- Load/Save/Reset Config: Click each button to customize your config.

Note: 'Profile' refers to individual profiles while 'Config' refers to all ten profiles.



Macro Key Functions

If you would like to assign a macro, click the “Macro Key Functions” tab to open up the Macro Key Functions Windows.

- Current Macro Assignment: Enter your macro in the Current Macro Assignment box. You can even choose to insert a delay time and/or a mouse-button press. Macros can be up to 16 keystrokes in length.
- Macro Behavior: Select how the macro will be playback.
- Basic Commands: A list of basic commands in Windows® OS that can be assigned to a button.
- Additional Commands: Another list of basic commands in Windows® OS that can be assigned to a button.
- Launch Program: Select a program to launch with the macro key.
- Select Profile: Select a profile you want the macro key to switch to.



Media Player Options

Choose the media player program to be launched with the Razer Lycosa™ media keys.

Lighting Options

Backlighting on the Razer Lycosa™ can be switched on/off. In addition, there is an option to switch off all backlighting except the WASD cluster.

Auto Switching Override

Check this to override all enabled Auto Switching Profiles in the Profile Settings Menu.

Show Changes on Screen

Check this to view visual changes such as the text “Profile 1” on screen when Profile 1 is activated.

System Tray Default

Check this option to load the Razer Lycosa™ Configurator when double-clicking the system tray icon.

USING YOUR RAZER LYCOSA™

SWITCHING PROFILES

You can switch between profiles in three ways:

- a) By pressing the "Razer Logo" button + Function key (F1 – F10).

Example: To select Profile 4, hold on to 'Profile' and press 'F4'. Up to ten profiles may be preconfigured from F1 to F10.

- b) By selecting a profile in the Razer Lycosa™ Driver Control.

Example: To selecting Profile 6 to be activated upon loading of Program A

1. Open up the Razer Lycosa™ Driver Control.
2. Click on the Profile Selection tab.
3. Select Profile 6.
4. Under Profile Name, double-click to enter the name you want to give to that Profile.
5. Under .Exe, double-click to open up the directory browser to locate the executable file for Program A.
6. Check the auto-switching option for Profile 6 to activate auto-switching.
7. Click OK.

- c) By programming a macro key in the Razer Lycosa™ Configurator to activate a particular Profile.

PROGRAMMING MACRO KEYS

Example: To configure Macro Key Q to "Save As.." in Photoshop.

1. Open up the Razer Lycosa™ Driver Control.
2. Click Q to slide open the Macro Key Functions windows.
3. Click the "Record" button.

4. Type "Shift", "Ctrl" and "S" inside the Current Macro Assignment box.
5. Click OK.

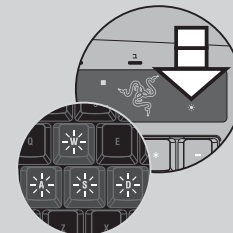
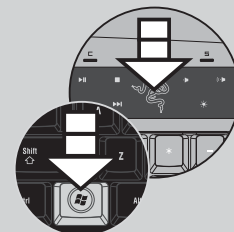
Note: You cannot record a mouse click or other commands during the recording phase. You can add them after you have completed recording the sequence of keystrokes.

SWITCHING LIGHTING MODE

You can switch the lighting mode of the Razer Lycosa™ using the TouchPanel™ lighting key.

Tap on the TouchPanel™ lighting key to cycle through the ON / OFF / WASD lighting mode.

Otherwise, you can use the Razer Lycosa™ Configurator to switch among the different lighting mode.



SETTING GAMING MODE

Gaming mode prevents accidental activation of the Windows Start function by disabling the Windows buttons.

You can toggle the Gaming Mode ON/OFF by pressing the "Razer Logo" button together with one of the Windows buttons. When this key combination is pressed, both Windows buttons are disabled. To reactivate the Windows buttons, press the "Razer Logo" button together with one of the Windows buttons again.

RESETTING TO FACTORY DEFAULT

To reset the Razer Lycosa™ to factory default settings, press and hold the "Razer Logo" button for 15 seconds while the Razer Lycosa™ is connected to a powered on computer.

NB: ALL CONFIGURATION SETTINGS WILL BE LOST WHEN YOU RESET THE RAZER LYCOSA™ TO FACTORY DEFAULT SETTINGS. ALL CONFIGURATION SETTINGS WILL NEED TO BE RE-ENTERED OR LOADED FROM THE CONTROL PANEL AFTER THE RAZER LYCOSA™ IS RESET.

SAFETY AND MAINTENANCE

SAFETY GUIDELINES

In order to achieve maximum safety while using your Razer Lycosa™, we suggest that you adopt the following guidelines:

1. Should you have trouble operating the keyboard properly and troubleshooting does not work, unplug the device and call the Razer™ hotline or go to www.razerzone.com for support. Do not attempt to service or fix the device yourself at any time.
2. Do not take the keyboard apart (doing so will also void your warranty) and do not attempt to service it yourself or operate it under abnormal current loads.
3. Keep your keyboard away from liquid, humidity or moisture. Operate your keyboard only within the specified temperature range of 0°C (32°F) to 40°C (104°F). Should you operate it in a temperature that is beyond this range, unplug and switch off the device in order to let the temperature stabilize within the optimal temperature range.

COMFORT

Research has shown that long periods of repetitive motion, improper positioning of your computer peripherals, incorrect body position, and poor habits may be associated with physical discomfort and injury to nerves, tendons, and muscles. Below are some guidelines to avoid injury and ensure optimum comfort while using your Razer Lycosa™.

1. Position your keyboard and monitor directly in front of you with your mouse next to it. Place your elbows next to your side, not too far away and with your mouse within easy reach.
2. Adjust the height of your chair and table so that your keyboard and mouse are at or below elbow height.
3. Keep your feet well supported, posture straight and your shoulders relaxed.
4. During gameplay, relax your wrist and keep it straight. If you do the same tasks with your hands repeatedly, try not to bend, extend or twist your hands for long periods.
5. Do not rest your wrists on hard surfaces for long periods.

6. Customize the buttons on your keyboard to suit your style of gaming in order to minimize repetitive or awkward motions while gaming.
7. Make sure your fingers are resting on the keyboard buttons comfortably.
8. Do not sit in the same position all day. Get up, step away from your desk and do exercises to stretch your arms, shoulders, neck and legs.
9. If you should experience any physical discomfort while using your keyboard, such as pain, numbness, or tingling in your hands, wrists, elbows, shoulders, neck or back, please consult a qualified medical doctor immediately.

MAINTENANCE AND USE

There is a little regular maintenance required to keep the Razer Lycosa™ in optimum condition. Once a month, we recommend that you unplug the keyboard from the USB port and clean the keys on it with a soft cloth or cotton swab. Use a little warm water but avoid soap or harsh cleaning agents.

LEGALESE

COPYRIGHT INFORMATION

©2007 Razer USA Ltd. All Rights Reserved. Razer™, the Razer Triple-Headed Snake logo, the Razer distressed word logo, Lycosa™ and other trademarks contained herein are the property of Razer USA Ltd and/or its affiliated or associated companies, registered in the United States or other countries. Actual product may differ from pictures.

Razer™ assumes no responsibility for any errors that may appear in this manual or help file. Information contained herein is subject to change without notice.

Razer™ may have patents, patent applications, trademarks, copyrights, trade secrets or other property rights, intellectual and otherwise concerning the product and subject matter in this manual. Except as is provided in any written license agreement provided by Razer™, furnishing of this manual does not give you a license to any such patents, trademarks, copyrights or

other intellectual property rights, whether registered or otherwise. Patent Pending.

SOFTWARE LICENSE AGREEMENT ('AGREEMENT')

RAZER™ IS WILLING TO LICENSE THE ENCLOSED SOFTWARE TO YOU ONLY ON THE CONDITION THAT YOU ACCEPT ALL OF THE TERMS CONTAINED IN THIS LICENSE AGREEMENT. This is a legal agreement between you (either an individual end-user, corporate entity or any other entity whatsoever) and Razer™. By installing, uploading, copying or utilizing in any way the software, you are agreeing to be bound by the terms and conditions of this Agreement. If you do not agree to the terms of this Agreement, do not install the software and promptly return the software package and other items that are part of this product in their original package with your payment receipt to your point of purchase for a full refund.

GRANT OF LICENSE

Razer™ grants you a non-exclusive, revocable license to use one copy of the enclosed software program, licensed and

not sold to you, ("Software") on one computer only with the Razer™ product you have purchased. No other rights are granted. The Software is in use if it is installed, including but not limited to loaded on the computer's permanent or temporary memory. For backup purposes only, you may make one copy of the Software for your own use. You must include on the backup copy all copyright and other notices included in the Software as supplied by Razer™. Installation on a network server for the sole purpose of your internal distribution of the Software is permitted only if you have purchased an individual Software package or concurrent dedicated license for each networked computer to which the Software is distributed.

RESTRICTIONS

Razer™ retains full ownership of the Software. You shall not directly and/or indirectly attempt to decompile, disassemble, reverse-engineer, or modify the Software licensed to you in any way except as allowed by law. You may not transmit the Software over a network (except as expressly permitted above) or electronically using any means. You may

not directly and/or indirectly transfer the Software except upon a permanent transfer of the enclosed Razer™ product provided that all Software updates are included in the transfer, you do not retain a copy of the Software, and the transferee agrees to be bound by the terms and conditions in this license. Upon any violation of any of the provisions of the Agreement, your rights to use the software shall automatically terminate and all copies of the Software must be returned to Razer™ or destroyed.

LIMITATION OF LIABILITY

The warranties set forth in this agreement replace and/or supersede all other warranties and your remedies for breach of warranty are expressly limited to those herein set forth. Razer™ expressly disclaims all other warranties to the extent allowed by law including, but not limited to, the implied warranties of merchantability, fitness for a particular purpose and non-infringement of third-party rights with respect to the documentation, software (including patches and/or updates) and hardware. No Razer™ supplier, dealer, agent, or employee is authorized to make any

modification, extension or alteration of the warranty or to substitute products or services, lost profits, loss of information or data, or any other special, indirect, consequential or incidental damages arising in any way out of the distribution of, sale of, resale of, use of, or inability to use any product or software subject to warranty herein set forth. In no event will Razer™ be liable for any special, incidental, indirect or consequential damages whatsoever.

COSTS OF PROCUREMENT PRODUCT OR SERVICE

For the avoidance of doubt, in no event will Razer™ be liable for any costs of procurement unless it has been advised of the possibility of such damages, and in no case shall Razer™ be liable for any costs of procurements liability exceeding the actual money paid for the products subject to warranty at issue.

In the event some jurisdictions do not allow the limitation of implied warranties or liability for incidental, consequential, special, or indirect damages, the above limitation may not apply. The above limitations will not apply in case of personal injury where

and to the extent that applicable laws require such liability.

U.S. GOVERNMENT RESTRICTED RIGHTS

The Software is provided to the U.S. government only with restricted rights and limited rights. Use, duplication, or disclosure by the U.S. Government is subject to restrictions set forth in 48 C.F.R. 2.101 (October 1995), consisting of "Commercial Computer Software" and "Commercial Computer Software Documentation as such terms are used in 48 C.F.R. 12.212 (September 1995), and in FAR Sections 52-227-14 and 52-227-19 r DFARS Section 52-227-7013 © (1) (ii), or their successors, as applicable. Consistent with 48 C.F.R. 12.512 and 48 C.F.R. 227-7202-1 through 27-7204-4 (June 1995), or any successor regulations, this Software is provided to U.S. Government users pursuant to the terms and conditions herein.

FCC DECLARATION OF CONFORMANCE

This equipment has been tested and found to comply with the limits for a Class B digital device, pursuant to part 15

of the FCC Rules. These limits are designed to provide reasonable protection against harmful interference in a residential installation. This equipment generates, uses and can radiate radio frequency energy and, if not installed and used in accordance with the instructions, may cause harmful interference to radio communications. However, there is no guarantee that interference will not occur in a particular installation. If this equipment does cause harmful interference to radio or television reception, which can be determined by turning the equipment off and on, the user is encouraged to try to correct the interference by one or more of the following measures:

Reorient or relocate the receiving antenna. Increase the separation between the equipment and the receiver. Connect the equipment into an outlet on a circuit different from that to which the receiver is connected. Consult the dealer or an experienced radio TV technician for help.

For more information, refer to the online help system on your Razer Lycosa™ Gaming Keyboard CD ROM or www.razerzone.com

WEEE INFORMATION



ENGLISH

Correct Disposal of This Product (Waste Electrical & Electronic Equipment)

(Applicable in the European Union and other European countries with separate collection systems)

This marking shown on the product or its literature, indicates that it should not be disposed with other household wastes at the end of its working life. To prevent possible harm to the environment or human health from uncontrolled waste disposal, please separate this from other types of wastes and recycle it responsibly to promote the sustainable reuse of material resources. Household users should contact either the retailer where they purchased this product, or their local government office, for details of where and how they can take this item for environmentally safe recycling. Business users should contact their supplier and check the terms and conditions of the purchase contract. This product should not be mixed with other commercial wastes for disposal.

FRANÇAIS

Comment éliminer ce produit (déchets d'équipements électriques et électroniques)

(Applicable dans les pays de l'Union Européen et aux autres pays européens disposant de systèmes de collecte sélective)

Ce symbole sur le produit ou sa documentation indique qu'il ne doit pas être éliminé en fin de vie avec les autres déchets ménagers. L'élimination incontrôlée des déchets pouvant porter préjudice à l'environnement ou à la santé humaine, veuillez le séparer des autres types de déchets et le recycler de façon responsable. Vous favoriserez ainsi la réutilisation durable des ressources matérielles. Les particuliers sont invités à contacter le distributeur leur ayant vendu le produit ou à se renseigner auprès de leur mairie pour savoir où et comment ils peuvent se débarrasser de ce produit afin qu'il soit recyclé en respectant l'environnement. Les entreprises sont invitées à contacter leurs fournisseurs et à consulter les conditions de leur contrat de vente. Ce produit ne doit pas être éliminé avec les autres déchets commerciaux.

ITALIANO

Corretto smaltimento del prodotto (rifiuti elettrici ed elettronici)

(Applicabile in i paesi dell'Unione Europea e in quelli con sistema di raccolta differenziata)

Il marchio riportato sul prodotto o sulla sua documentazione indica che il prodotto non deve essere smaltito con altri rifiuti domestici al termine del ciclo di vita. Per evitare eventuali danni all'ambiente o alla salute causati dall'inopportuno smaltimento dei rifiuti, si invita l'utente a separare questo prodotto da altri tipi di rifiuti e di riciclarlo in maniera responsabile per favorire il riutilizzo sostenibile delle risorse materiali. Gli utenti domestici sono invitati a contattare il rivenditore presso il quale è stato acquistato il prodotto o l'ufficio locale preposto per tutte le informazioni relative alla raccolta differenziata e al riciclaggio per questo tipo di prodotto. Gli utenti aziendali sono invitati a contattare il proprio fornitore e verificare i termini e le condizioni del contratto di acquisto. Questo prodotto non deve essere smaltito unitamente ad altri rifiuti commerciali.

DEUTSCH

Korrekte Entsorgung dieses Produkts (Elektromüll)

[Anzuwenden in den Ländern der Europäischen Union und anderen europäischen Ländern mit einem separaten Sammelsystem]

Die Kennzeichnung auf dem Produkt bzw. auf der dazugehörigen Literatur gibt an, dass es nach seiner Lebensdauer nicht zusammen mit dem normalen Haushaltsmüll entsorgt werden darf. Entsorgen Sie dieses Gerät bitte getrennt von anderen Abfällen, um der Umwelt bzw. der menschlichen Gesundheit nicht durch unkontrollierte Müllbeseitigung zu schaden. Recyceln Sie das Gerät, um die nachhaltige Wiederverwertung von stofflichen Ressourcen zu fördern. Private Nutzer sollten den Händler, bei dem das Produkt gekauft wurde, oder die zuständigen Behörden kontaktieren, um in Erfahrung zu bringen, wie sie das Gerät auf umweltfreundliche Weise recyceln können. Gewerbliche Nutzer sollten sich an Ihren Lieferanten wenden und die Bedingungen des Verkaufsvertrags konsultieren. Dieses Produkt darf nicht zusammen mit anderem Gewerbemüll entsorgt werden.

ESPAÑOL

Eliminación correcta de este producto (material eléctrico y electrónico de descarte)

[Aplicable en la Unión Europea y en países europeos con sistemas de recogida selectiva de residuos]

La presencia de esta marca en el producto o en el material informativo que lo acompaña, indica que al finalizar su vida útil no deberá eliminarse junto con otros residuos domésticos. Para evitar los posibles daños al medio ambiente o a la salud humana que representa la eliminación incontrolada de residuos, separe este producto de otros tipos de residuos y recíclelo correctamente para promover la reutilización sostenible de recursos materiales. Los usuarios particulares pueden contactar con el establecimiento donde adquirieron el producto, o con las autoridades locales pertinentes, para informarse sobre cómo y dónde pueden llevarlo para que sea sometido a un reciclaje ecológico y seguro. Los usuarios comerciales pueden contactar con su proveedor y consultar las condiciones del contrato de compra. Este producto no debe eliminarse mezclado con otros residuos comerciales.

PORTUGUÊS

Eliminação Correcta Deste Produto [Resíduo de Equipamentos Eléctricos e Electrónicos]

Esta marca, apresentada no produto ou na sua literatura indica que ele não deverá ser eliminado juntamente com os resíduos domésticos indiferenciados no final do seu período de vida útil. Para impedir danos ao ambiente e à saúde humana causados pela eliminação incontrolada de resíduos deverá separar este equipamento de outros tipos de resíduos e reciclá-lo de forma responsável, para promover uma reutilização sustentável dos recursos materiais. Os utilizadores domésticos deverão contactar ou o estabelecimento onde adquiriram este produto ou as entidades oficiais locais para obterem informações sobre onde e de que forma podem levar este produto para permitir efectuar uma reciclagem segura em termos ambientais. Os utilizadores profissionais deverão contactar o seu fornecedor e consultar os termos e condições do contrato de compra. Este produto não deverá ser misturado com outros resíduos comerciais para eliminação.

DANSK

Korrekt affaldsbortskaffelse af dette produkt (elektrisk & elektronisk udstyr)

Mærket på dette produkt eller i den medfølgende dokumentation betyder, at produktet ikke må bortskaffes sammen med almindeligt husholdningsaffald efter endt levetid. For at undgå skadelige miljø- eller sundhedspåvirkninger på grund af ukontrolleret affaldsbortskaffelse skal dette produkt bortskaffes særskilt fra andet affald og indleveres behørigt til fremme for bæredygtig materialegenvindning. Hjemmebrugere bedes kontakte forhandleren, hvor de har købt produktet, eller den lokale myndighed for oplysning om, hvor og hvordan de kan indlevere produktet med henblik på miljøforsvarlig genvinding. Erhvervsbrugere bedes kontakte leverandøren og læse betingelserne og vilkårene i købekontrakten. Dette produkt bør ikke bortskaffes sammen med andet erhvervsaffald.