



Whether your passion lies in FPS, MMORPG, or RTS games, the Razer Nostromo<sup>®</sup> gaming keypad is designed to give you the upper hand with cutting edge ergonomics designed for intuitive game control while you play in complete comfort. With an arsenal of tournament-grade controls including 16 fully programmable Hyperresponse<sup>™</sup> keys, 8 keymaps that you can switch between on the fly, and an 8-way directional thumb pad all integrated into one dedicated gaming keypad, you're prepared to take on all challengers.

## MASTER GUIDE

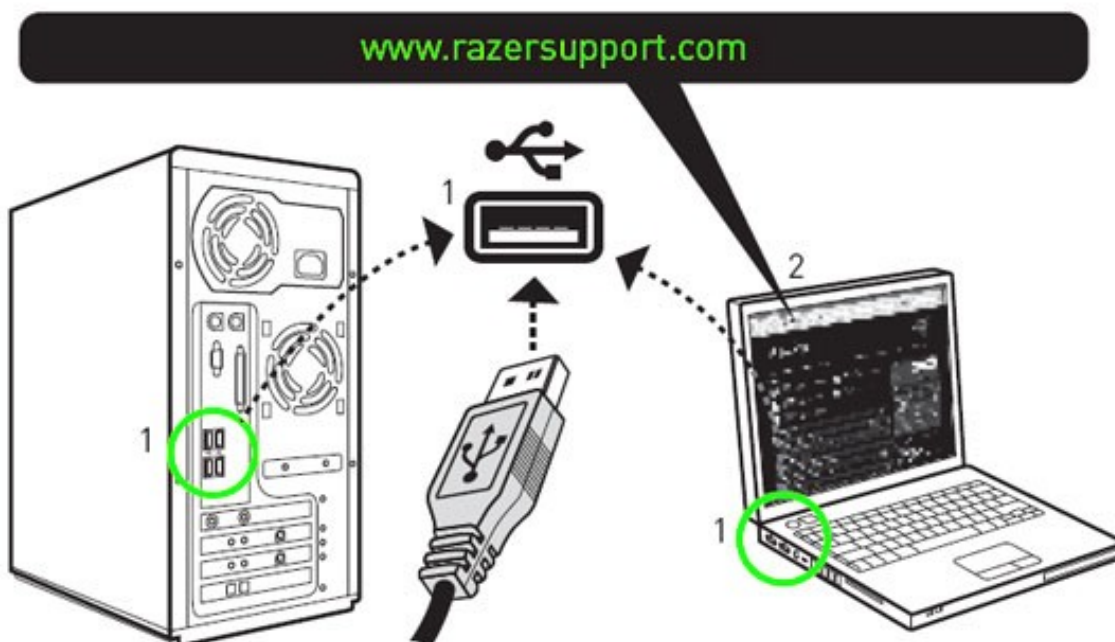
### CONTENTS

1. System Requirements
2. Installation / Registration / Technical Support
3. Key Features
4. Using Your Razer Nostromo
5. Configuring Your Razer Nostromo

### 1. SYSTEM & HARDWARE REQUIREMENTS:

- PC with USB port
- Windows<sup>®</sup> 7 / Windows Vista<sup>®</sup> / Windows<sup>®</sup> XP
- Internet connection (for driver installation)
- 35MB of free hard disk space

### 2. INSTALLATION / REGISTRATION / TECHNICAL SUPPORT WINDOWS<sup>®</sup> 7 / WINDOWS VISTA<sup>®</sup> / WINDOWS<sup>®</sup> XP INSTALLATION INSTRUCTIONS



- Step 1: Plug your Razer Nostromo® into the USB port of your computer.  
Step 2: Download the Driver Installer from [www.razersupport.com](http://www.razersupport.com).  
Step 3: Run the installer.  
Step 4: Choose setup language. Click OK to proceed.  
Step 5: The Razer Nostromo setup screen appears. Click NEXT to proceed.  
Step 6: Read the license agreement. If you agree to all the terms, select "I accept the terms in the license agreement". Click NEXT to proceed.  
Step 7: Enter your User Name and Organization. Click NEXT to proceed.  
Step 8: Choose your installation setup. Click NEXT to proceed.  
Step 9: If everything is correct. Click INSTALL to begin installation.  
Step 10: At the end of the installation, click FINISH to complete the installation.  
Step 11: Follow the onscreen instructions to restart your computer. Click YES.

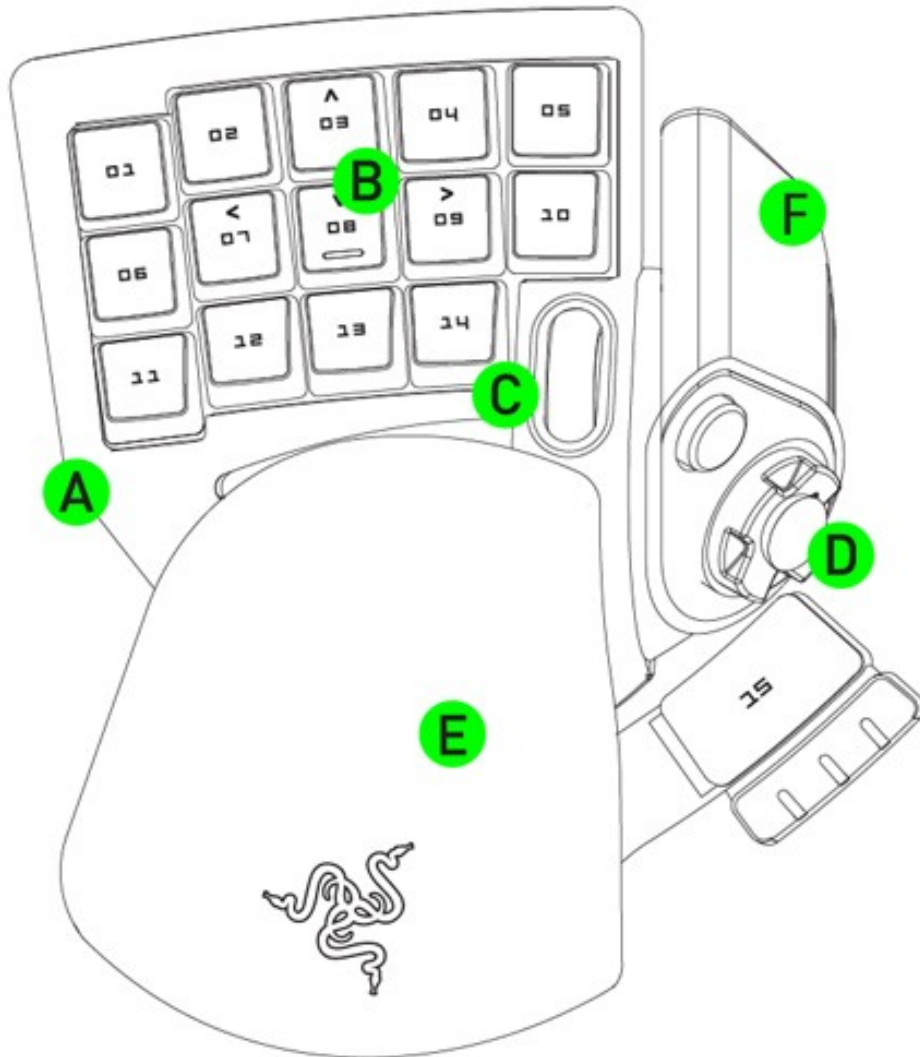
### **REGISTERING YOUR RAZER NOSTROMO EXPERT GAMING KEYPAD**

Please visit [www.razerzone.com/registration/](http://www.razerzone.com/registration/) for online product registration.

What you'll get:

- 1 year limited manufacturer's warranty
- Free online technical support at [www.razersupport.com](http://www.razersupport.com)

### 3. KEY FEATURES

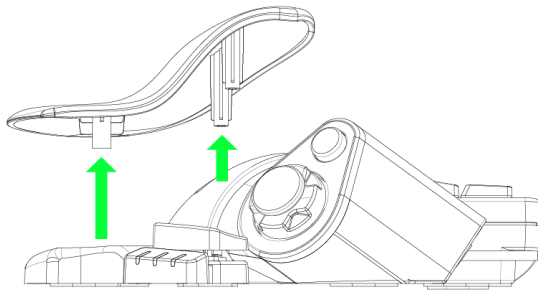


- A. Ergonomic form factor and tournament-grade layout
- B. 16 fully programmable Hyperresponse™ keys
- C. Backlit keypad and scroll wheel
- D. Programmable 8-way directional thumb pad
- E. Adjustable Soft-Touch Handrest Pad
- F. 20 Different Game Profiles

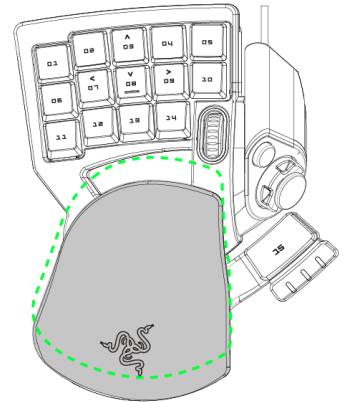
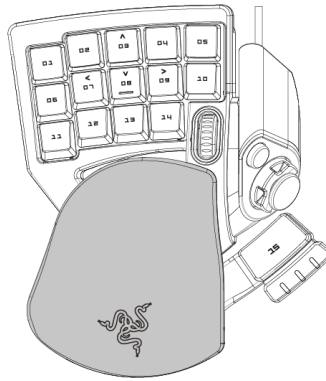
## 4. USING YOUR RAZER NOSTROMO

### ADJUSTING THE WRIST PAD

You can remove the wrist pad and adjust it accordingly to suit your palm grip.

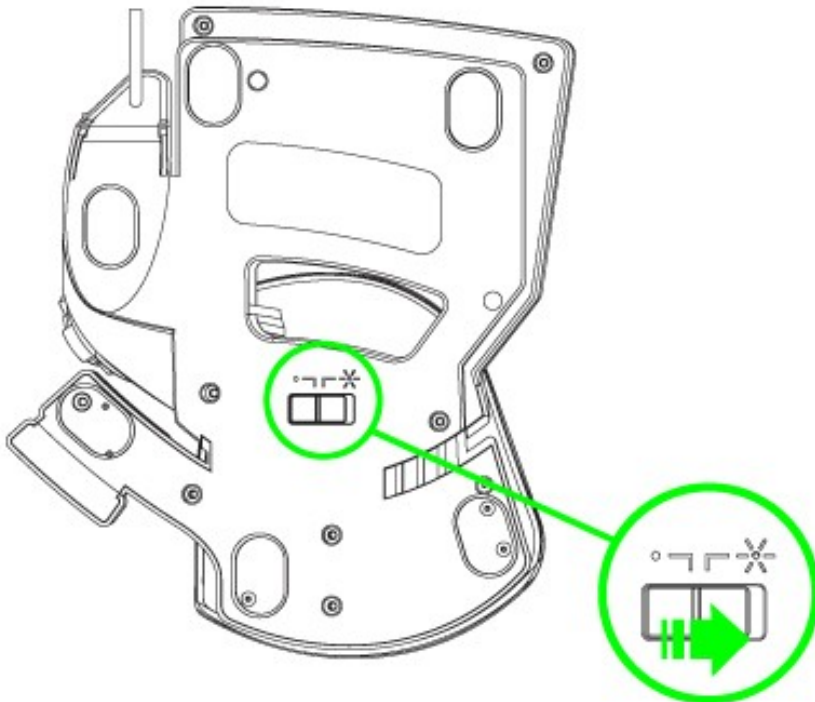


SIDE VIEW



### USING THE BACKLIGHT SWITCH

Turn on/off the backlight on the Razer Nostromo.



## SWITCHING PROFILES

You can switch between profiles in 4 ways:

**a.** By changing the Current Profile in the Razer Nostromo Configurator.

Example:

1. Open up the Razer Nostromo Configurator.
2. Click on the Current Profile name on the Assign Buttons tab.
3. Choose the profile you will like to change to from the dropdown list.
4. Click OK.

**b.** By selecting the Current Profile radio button in the Manage Profiles tab in the Razer Nostromo Configurator.

Example:

1. Open up the Razer Nostromo Configurator.
2. Click on the Manage Profiles tab.
3. Click on the Current Profile radio button you will like to activate or right click and choose "Set Active" to switch profile.
4. Click OK.

**c.** By activating auto-switching profile in the Razer Nostromo Configurator.

Example: Selecting Profile 6 to be activated upon loading of Program A

1. Open up the Razer Nostromo Configurator.
2. Click on the Manage Profiles tab.
3. Select Profile 6.
4. Right-click the row, select 'Rename' and enter a name for the profile.
5. Right-click the row, select 'Assign Application' to open up the directory browser and locate the executable file for Program A.
6. Check the auto-switching option for Profile 6 to activate auto-switching.
7. Click OK.

**d.** By programming a key in the Razer Nostromo Configurator to activate a particular Profile.

## Programming Keys

You can program the macro in the Razer Nostromo Configurator.


Example: To configure Key "03" to "Save" in Notepad.

1. Open up the Razer Nostromo Configurator.
2. Go to the Manage Macros Tab.
3. Press "New" to start a new macro
4. Enter a name for the macro – example "Save" and press OK.
5. Enter "Ctrl" and "S" (this command is the "Save" function) to define the keystroke for the macro.
6. Go to the Assign Buttons tab.
7. Select "03" key in the Assign Buttons tab.
8. Choose the Macro Playback function. A Macro List pop up box appears.
9. Select the "Save" macro.
10. Choose the Playback mode. This indicates how the macro should be playback. You have the options of setting the macro to run:

- One time;
- User defined number of times;
- Continuously until key is released;
- Continuously until key is pressed again.

11. CLICK OK.

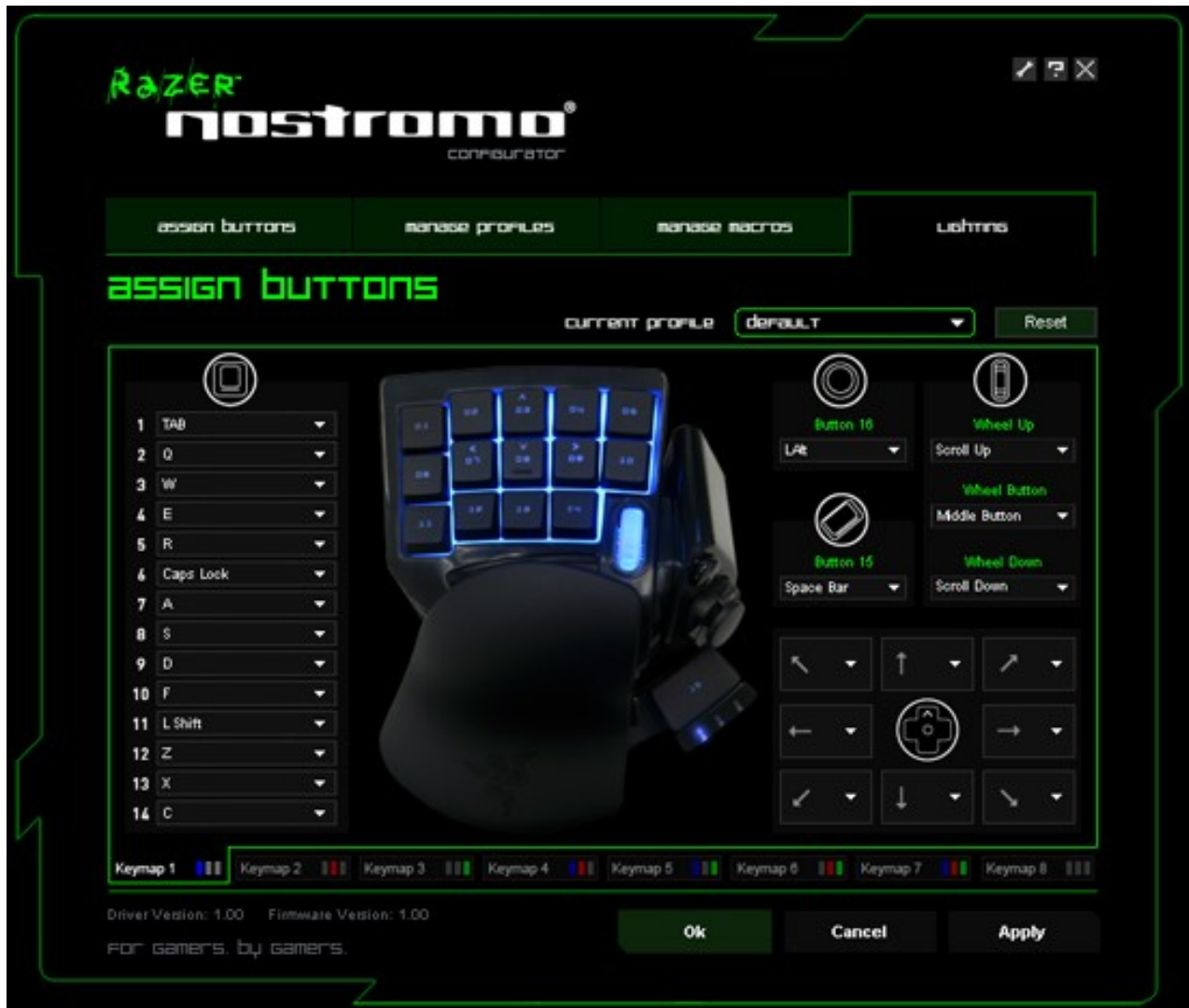
## SOFTWARE UPDATE & RESET

Update the Razer driver and firmware software by clicking on the  button. This will connect you to [www.razersupport.com](http://www.razersupport.com) for the latest driver/firmware downloads. You can also restore your current profile to the default settings of your current profile by pressing the **RESET** button.

## 5. CONFIGURING YOUR RAZER NOSTROMO

The features listed here require the Razer Nostromo Configurator to be installed and the Razer Nostromo Tray Icon to be active. Each setting will be saved to the current profile on the current machine only.

### ASSIGN BUTTONS TAB



In the Assign Buttons tab, you can assign various functions to each of the keys based on your own preferences. The key can be programmed using the following functions:

- Keyboard Key – Change a keyboard key to the key.
- Macro Playback – Assign a macro to the key.
- Keymap Switch – Assign a keymap to a key for quick keymap change.
- More >

**Mouse Button** – Assign a mouse button function to the key

- Click
- Menu
- Universal Scrolling
- Double Click
- Forward
- Backward
- Scroll Up
- Scroll Down

**Joystick** – Assign a joystick function to the key.

**Profile Switch** – Assign a profile to a key for quick profile change.

**Launch Program** – Activate a program with the key.

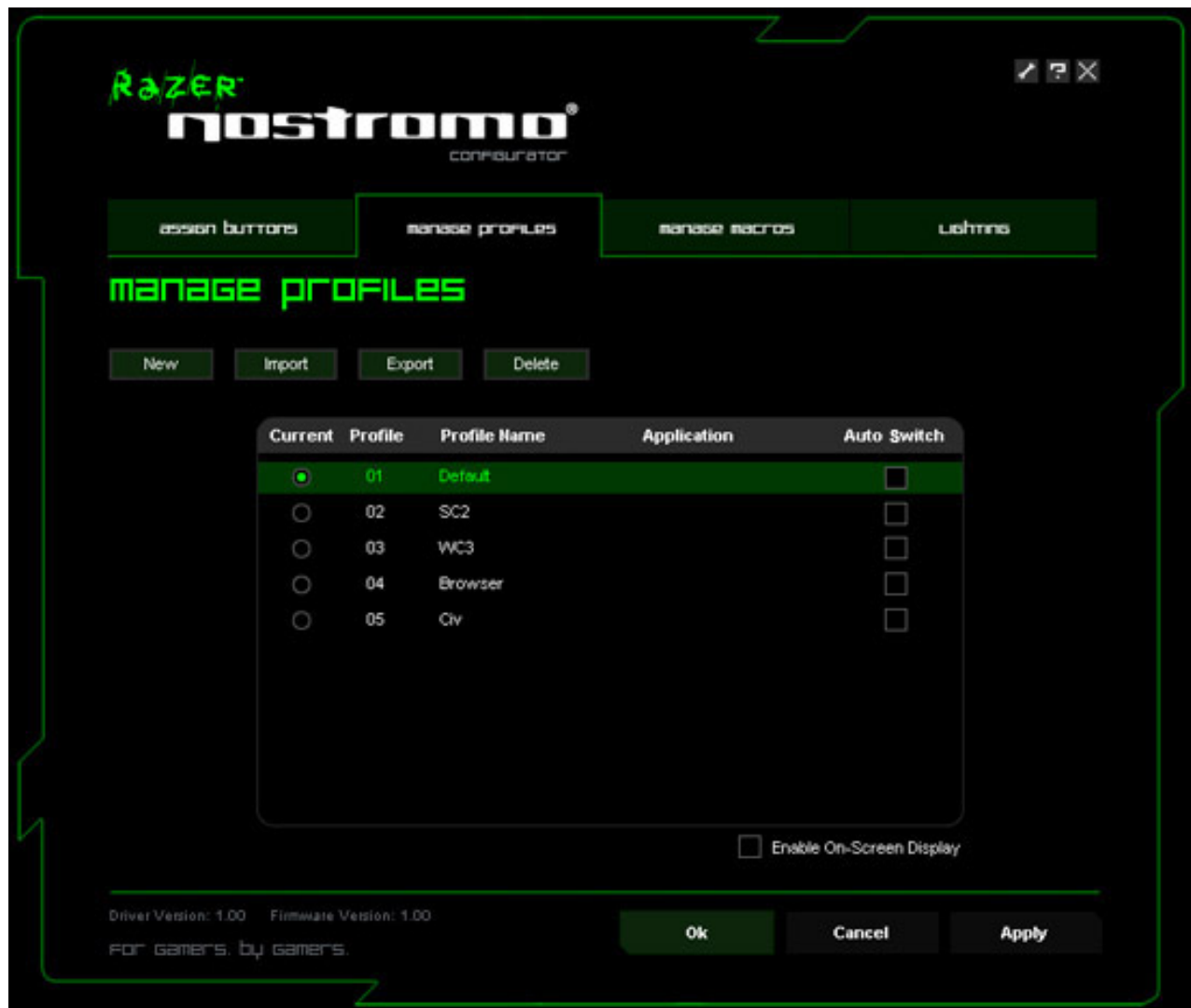
**Disabled** – Disable the functionality of the key.

- Default – Shows original key function. Click to revert to this.

Make use of the Current Profile drop down menu to switch between different profiles during key assignment.

**Keymaps** – You can toggle between Keymaps within each Profile. The lighting on the 3 LEDs on the Razer Nostromo will instantly show you the exact Keymap you are using.

## MANAGE PROFILES TAB



A profile allows you to store your various keypad settings such as button assignments and macros as a single group for your convenience.

In the Manage Profiles tab, you can create and launch customized profiles based on the application you have activated. Up to 20 profiles can be saved on your current machine.

A. **Current:** Indicates the current active profile.

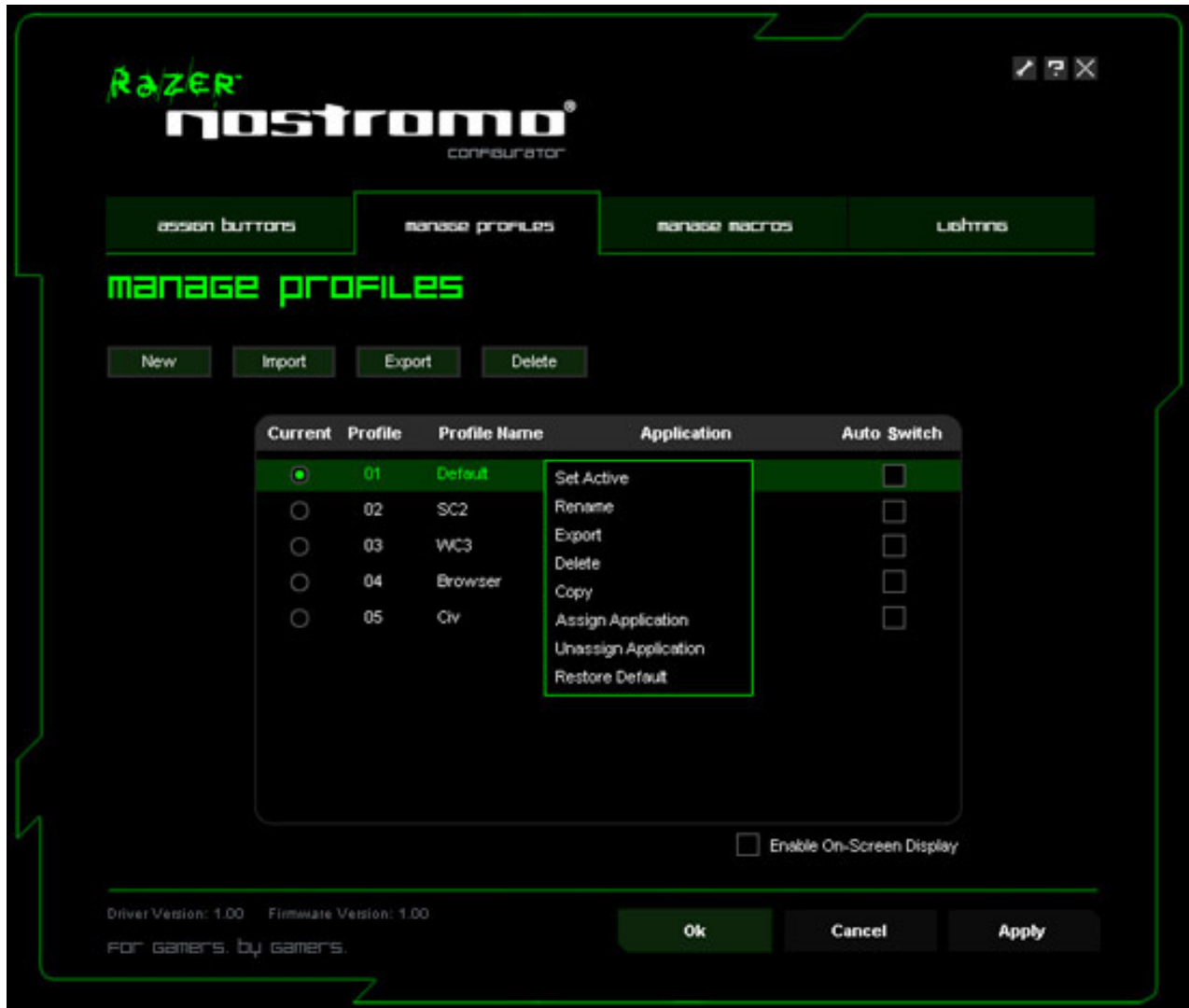
B. **Profile:** Indicates the profile number.

C. **Profile Name:** Right-click on this row and select “Rename” to enter a profile name of your choice.

D. **Application:** Right-click on this row and select “Assign Application” to open up the directory

browsing. Select the executable file of the program you want the profile to be linked to.  
E. **Auto Switch**: Select this option to activate the current profile as an On-The-Fly profile.

Check the Enable On-Screen Display box to show your profile name when the profile is activated.



Right-clicking inside the Manage Profiles tab allows you to quickly access a list of extra commands.



## MANAGE MACROS TAB



A macro is a sequence of keystrokes executed in a particular order and timing. It allows you to execute a chain of commands, with the press of just one button, to optimize your gameplay.

If you would like to record a macro, click the “Manage Macros” tab.

In the Manage Macros tab, you can record unlimited keystrokes (dependent on your storage resources). These macros can also be imported and exported onto your hard disk for future usage.

**a. Macro Entry:** Enter your macro in the Macro Entry box. You can even choose to insert a delay time and/or a mouse-button press.

**b. Delay (ms):** Choose the amount of delay to be inserted between keystrokes of your macro.

**c. Basic Commands:** A list of basic commands in Windows OS that can be inserted between keystrokes of your macro.

**d. Additional Commands:** Another list of basic commands in Windows OS that can be inserted between keystrokes of your macro.

You can ignore delays between events of a macro by clicking on the respective checkbox before recording.

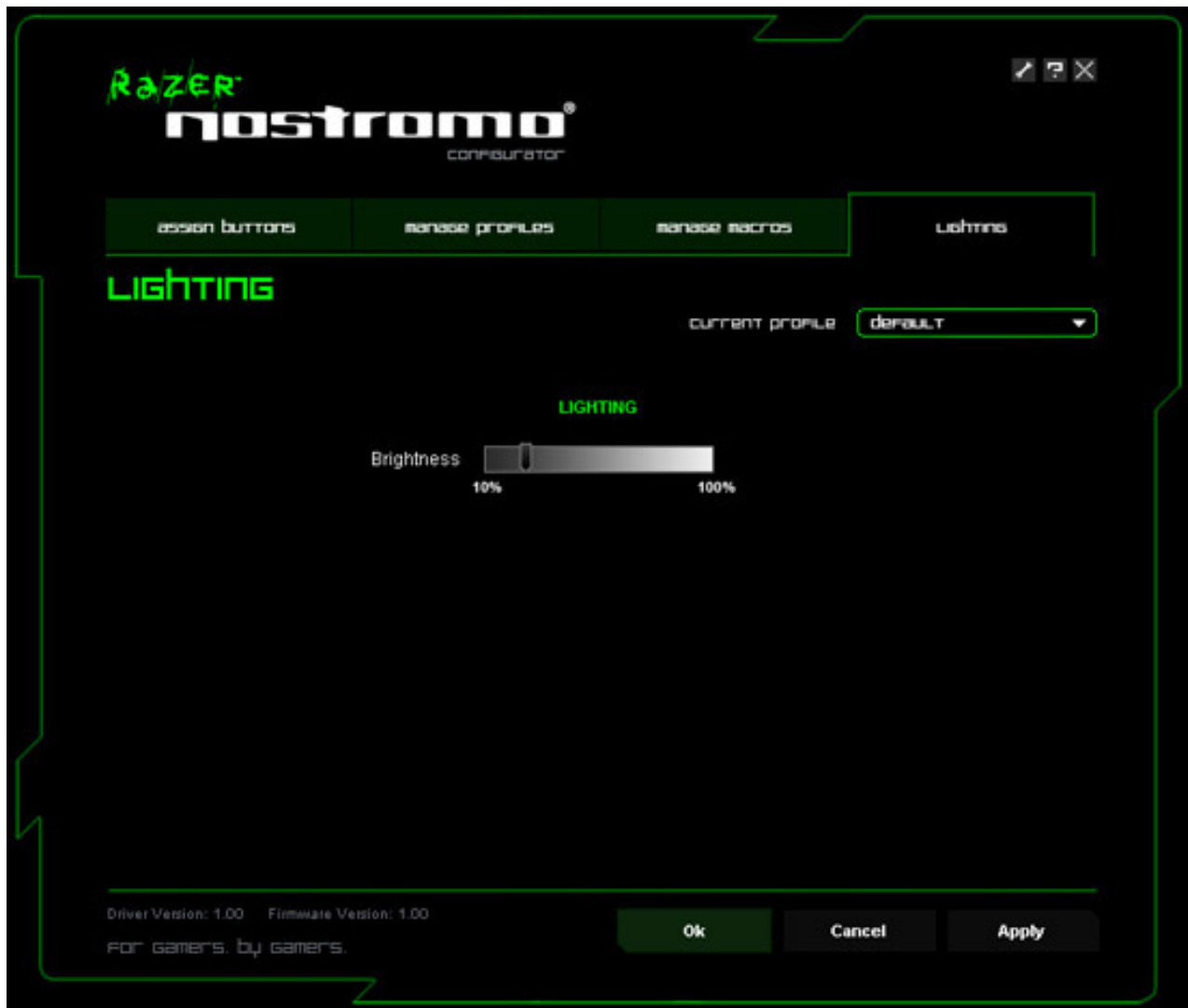
You can specify a fixed default delay timing to be used in between events of a macro by clicking on the respective checkbox before recording.





Right-clicking inside the Macro window allows you quick access to a list of extra commands for inserting or editing in-between the keystrokes of your macro.

## LIGHTING TAB



Upon activating the backlight, you can adjust the brightness.