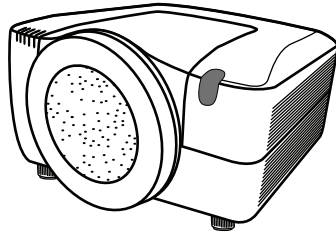


Projector

CP-X10000/CP-WX11000/CP-SX12000

User's Manual (detailed) Network Guide



Thank you for purchasing this projector.

This projector has the network function that brings you the following main features.

✓ **Web control**

The projector can be controlled and monitored by a web browser software on your PC, which can help you to setup and maintain the projector.

✓ **MY IMAGE (Still Image Transfer) Display**

The projector can display still images that are transferred via the network.

This manual is only intended to explain Network function only.

For safety, operations or any other issues, refer to the Safety Guide and User's Manual (concise and detailed).

⚠ WARNING ▶ Before using this product, be sure to read all manuals for this product.

After reading them, store them in a safe place for future reference.

NOTE • The information in this manual is subject to change without notice.

- The manufacturer assumes no responsibility for any errors that may appear in this manual.
- The reproduction, transfer or copy of all or any part of this document is not permitted without express written consent.

Trademark acknowledgment

- Microsoft® and Internet Explorer®, Windows®, Windows Vista® are registered trademark of Microsoft Corporation in the U.S. and/or other countries.
- JavaScript® is a registered trademark of Sun microsystems, Inc.
- DVI is a trademark of Digital Display Working Group.
- HDMI, the HDMI logo and High-Definition Multimedia Interface are trademarks or registered trademarks of HDMI Licensing LLC.
- Trademark PJLink is a trademark applied for trademark rights in Japan, the United States of America and other countries and areas.



All other trademarks are the properties of their respective owners.



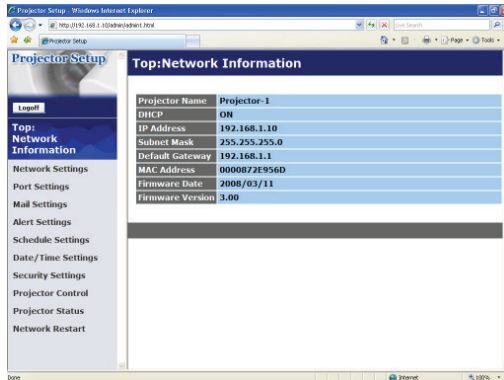
Content	2
1. Main functions	3
1.1 Configuring and controlling via a web browser	3
1.2 MY IMAGE (Still image Transfer) Display	3
2. Equipment connection and network setting.....	4
2.1 Required equipment preparation	4
2.2 Manual network connection setting.....	5
2.2.1 Equipments connection	5
2.2.2 Network settings.....	5
2.2.3 "Internet Option" setting.....	8
2.2.4 Check connection.....	9
3. Management with Web browser software	10
3.1 Configuring and controlling the projector via a web browser	11
3.1.1 Logon	13
3.1.2 Network Information	14
3.1.3 Network Settings	15
3.1.4 Port Settings.....	16
3.1.5 Mail Settings.....	18
3.1.6 Alert Settings	19
3.1.7 Schedule Settings	21
3.1.8 Date/Time Settings.....	23
3.1.9 Security Settings	25
3.1.10 Projector Control	27
3.1.11 Projector Status	31
3.1.12 Network Restart.....	32
3.1.13 Logoff	32
3.2 E-mail Alerts.....	33
3.3 Projector Management using SNMP.....	35
3.4 Event Scheduling	36
3.5 MY IMAGE (Still Image Transfer) Display.....	39
3.6 Command Control via the Network.....	41
3.7 Controlling the external devise via the projector (using the NETWORK BRIDGE function).....	46
3.8 Batch-controlling multiple projectors (using the DAISY CHAIN function)....	50

1. Main functions

1.1 Configuring and controlling via a web browser

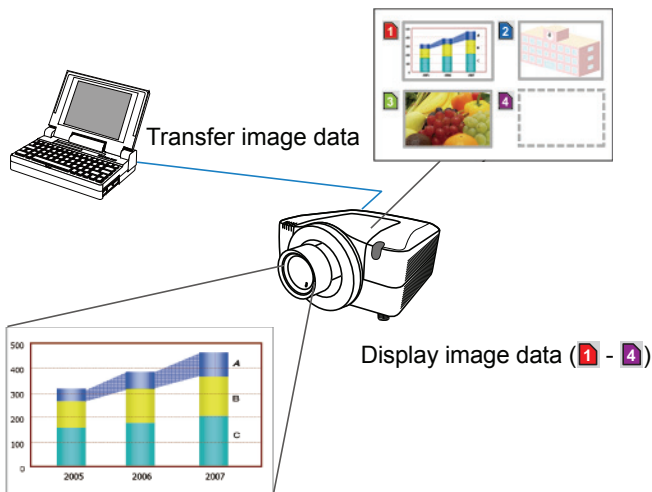
You can adjust or control the projector via a network from a web browser on a PC that is connected to the same network.

Logon the network from the web browser and it offers the menus to configure the network settings, monitor the projector and so on.



1.2 MY IMAGE (Still image Transfer) Display

Image files can be sent via the network, and up to 4 image data can be stored in the projector and displayed on screen one by one. (📖 39)



2. Equipment connection and network setting

2.1 Required equipment preparation

The following equipments are required to connect the projector to your PC through the network.

- PC : 1) equipped with the network feature
2) installed a web browser software (📖11)

LAN cable : CAT-5 or greater

NOTE • The system for using the network function of the projector requires communication environment conforming 100Base-TX or 10Base-T.

2.2 Manual network connection setting

2.2.1 Equipments connection

Connect the projector and PC with a LAN cable.

* Before connecting with an existing network, contact the network administrator.

Next, please check the PC setting as explained below.

2.2.2 Network settings

This is the explanation of network connection settings for Windows® XP and Internet Explorer®.

- 1) Log on to Windows® XP as administrator authority. (*)
- 2) Open “Control Panel” from “Start” menu.
- 3) Open “Network and Internet Connections” in “Control Panel”. (Fig. 2.2.2.a)

* Administrator authority is the account, which can access to all functions.

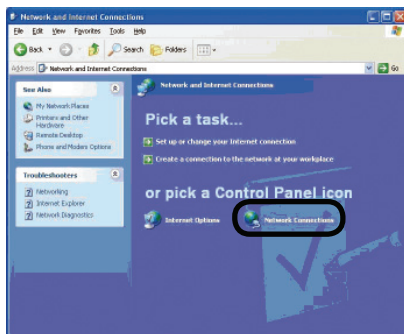


Fig. 2.2.2.a “Network and Internet Connections” window

- 4) Open “Network Connections”. (Fig.2.2.2.b)

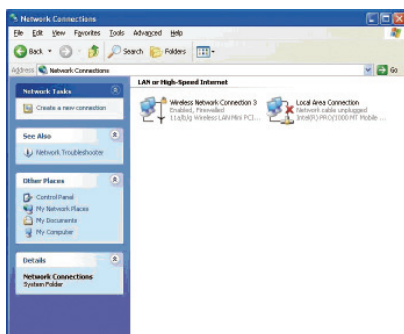


Fig. 2.2.2.b “Network Connections” window

2.2 Manual network connection setting (continued)

- 5) Open “Local Area Connection Properties” window you use for network device.
(Fig. 2.2.2.c)

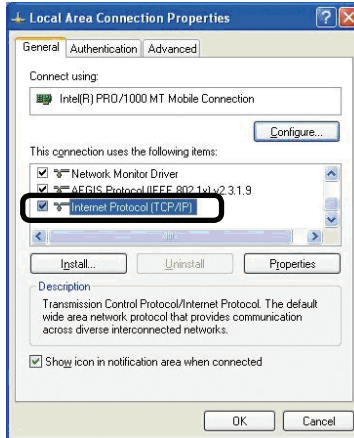


Fig. 2.2.2.c “Local Area Connection Properties” window

- 6) Set used protocol as “TCP/IP” and open “Internet Protocol (TCP/IP) Properties” window.

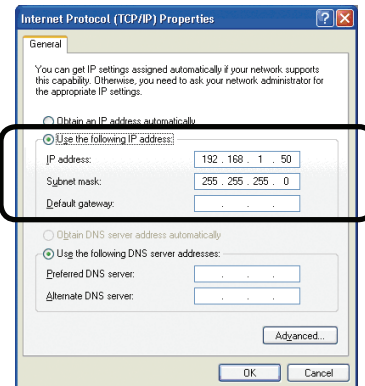


Fig. 2.2.2.d “Internet Protocol (TCP/IP) Properties” window

- 7) Set IP address, subnet mask and default gateway for PC.

2.2 Manual network connection setting (continued)

[About IP address]

■ Setting manually

The Network address portion included in the IP address set into your PC should be common with projector's one. And the entire IP address in the PC should not be overlapped with other equipments in the same network, including the projector.

For example

The projector's initial settings are as follows.

IP address: 192.168.1.10

Subnet mask: 255.255.255.0

(Network address: 192.168.1 in this case)

Therefore, specify PC's IP address as follows.

IP address: 192.168.1.xxx (xxx shows decimal number.)

Subnet mask: 255.255.255.0

(Network address: 192.168.1 in this case)

Select from 1 to 254 for "xxx" not duplicating with any other equipments.

In this case, projector has "192.168.1.10" IP address, specify from 1 to 254 except 10 for PC.

NOTE • "0.0.0.0" cannot be set to the IP address.

- The projector's IP address can be changed by using the configuration utility via a web browser. (11)
- If the projector and PC exist in the same network (i.e. network address is common), default gateway can be blank.
- When the projector and PC exist in different networks, default gateway setting is necessary. Contact the network administrator in detail.

■ Setting automatically

When DHCP server exists in network, it is possible to assign IP address to the projector and PC automatically.

* DHCP is abbreviation for "Dynamic Host Configuration Protocol" and has the function to provide necessary setting for network like IP address from server to client. A server that has DHCP function is called DHCP server.

2.2 Manual network connection setting (continued)

2.2.3 “Internet Option” setting

- 1) Click “Internet Options” in “Network and Internet Connections” window (Fig. 2.2.3.a) to open “Internet Properties” window. (Fig. 2.2.3.b)

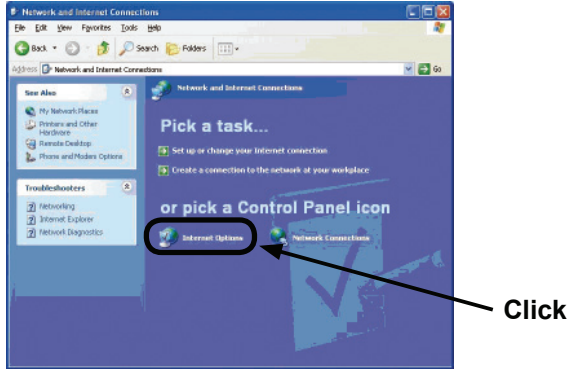


Fig. 2.2.3.a “Network and Internet Connections” window

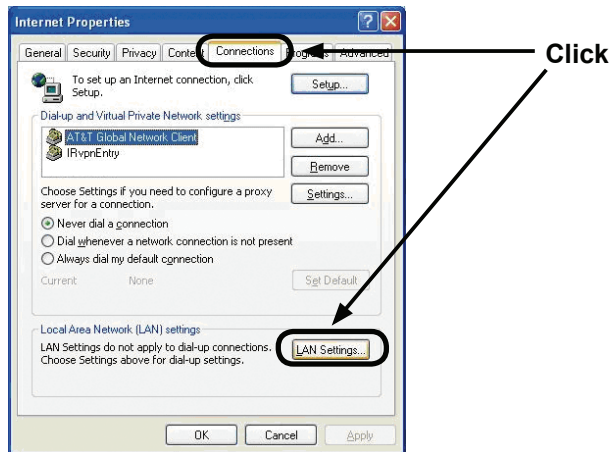


Fig. 2.2.3.b “Internet Properties” window

- 2) Click “Connections” tab and then click [LAN Settings] button to open “Local Area Network (LAN) settings”. (Fig. 2.2.3.c)

2.2 Manual network connection setting (continued)

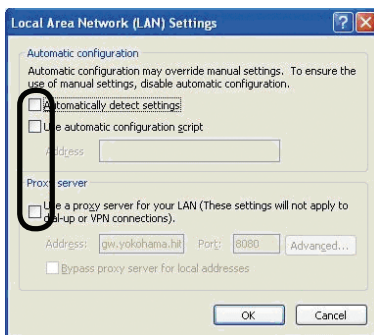


Fig. 2.2.3.c “Local Area Network (LAN) Settings” window

3) Uncheck all boxes in “Local Area Network (LAN) Settings” window. (Fig. 2.2.3.c)

2.2.4 Check connection

Check PC and projector are connected properly here. If it is not connected, check cable connections and settings are properly or not.

1) Start browser in PC and specify following URL, then click “→” button.

URL: `http://(Projector IP address)/`

For example, if projector IP address is 192.168.1.10, specify

URL: `http://192.168.1.10/`

2) If Fig. 2.2.4 appears, it succeeds.

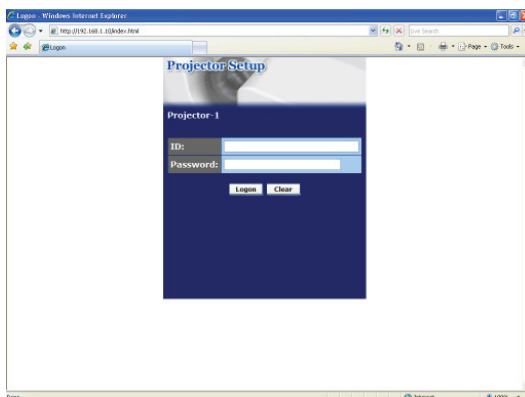


Fig. 2.2.4 “Logon Menu”

3. Management with Web browser software

This projector is equipped with the following network functions by using a web browser software.

3.1 Configuring and Controlling the Projector via a Web Browser

You can change the settings of or control the projector via a network by using a web browser from a PC that is connected to the same network.

(11)

3.2 E-mail Alerts

The projector can automatically send an alert to specified e-mail addresses when the projector requires maintenance or has encountered an error.

(33)

3.3 Projector Management using SNMP

This projector is SNMP (Simple Network Management Protocol) compliant, allowing you to monitor it from a remote location using SNMP software. In addition, the projector is able to send failure & warning alerts to a specified PC.

(35)

3.4 Event Scheduling

You can schedule the projector to perform various functions according to the date and time.

(36)

3.5 MY IMAGE (Still Image Transfer) Display

The projector can display still images that are transferred via the network.


(39)

3.6 Command Control via the Network


The projector can be controlled using RS-232C commands over a network.

(41)

3.7 Controlling the external device via the projector (using the NETWORK BRIDGE function)

Using the NETWORK BRIDGE function can control an external device as a network terminal, via this projector from the computer. (46)

3.8 Batch-controlling multiple projectors (using the DAISY CHAIN function)

Using the DAISY CHAIN function can simultaneously control multiple projectors connected to a shared RS-232C bus, from the computer. (50)

3.1 Configuring and controlling the projector via a web browser

You can adjust or control the projector via a network from a web browser on a PC that is connected to the same network.

NOTE • Internet Explorer® 5.5 or later is required.

- If JavaScript® is disabled in your web browser configuration, you must enable JavaScript® in order to use the projector web pages properly. See the Help files for your web browser for details on how to enable JavaScript®.
- You can communicate using SSL (Secure Socket Layer) if you are using Windows® XP Service Pack 2 or earlier versions of Microsoft® Windows®. Please specify "https://" when you enter the IP address of the projector on the web browser. You can't communicate the projector using SSL on Windows Vista®.
- It is recommended that all web browser updates are installed. It is especially recommended that all users running Internet Explorer® on a Microsoft® Windows® version prior to Windows® XP Service Pack 2 install security update Q832894 (MS04-004) or the web browser interface may not be displayed correctly. And when using an earlier version of Internet Explorer®, during operations the browser will log out after 50 seconds.

3.1 Configuring and controlling the projector via a web browser (continued)

When configuring or controlling the projector via a web browser, an ID and password are required. There are two types of IDs, Administrator ID and User ID. The following chart describes the differences between Administrator and User IDs.

Item	Description	Administrator	User
Network Information	Displays the projector's current network configuration settings.	√	√
Network Settings	Displays and configures network settings.	√	N/A
Port Settings	Displays and configures communication port settings.	√	N/A
Mail Settings	Displays and configures e-mail addressing settings.	√	N/A
Alert Settings	Displays and configures failure & warning alerts.	√	N/A
Schedule Settings	Displays and configures schedule settings.	√	N/A
Date/Time Settings	Displays and configures the date and time settings.	√	N/A
Security Settings	Displays and configures passwords and other security settings.	√	N/A
Projector Control	Controls the projector.	√	√
Projector Status	Displays the current projector status.	√	√
Network Restart	Restarts the projector's network connection.	√	N/A

3.1 Configuring and controlling the projector via a web browser (continued)

3.1.1 Logon

Refer to the following for configuring or controlling the projector via a web browser.

Example: If the IP address of the projector is set to **192.168.1.10**:

- 1) Enter “**http://192.168.1.10**” into the address bar of the web browser and press “Enter” key or click “**→**” button. The screen in Fig. 3.1.1a will be displayed.
- 2) Enter your ID and password and click **[Logon]**.

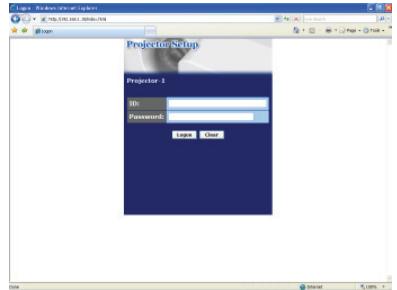


Fig. 3.1.1 a “Logon Menu”

Below are the factory default settings for Administrator ID, User ID and passwords.

Item	ID	Password
Administrator	Administrator	<blank>
User	User	<blank>

If the logon is successful, either the Fig. 3.1.1 b or Fig. 3.1.1 c screen will be displayed.

Main menu

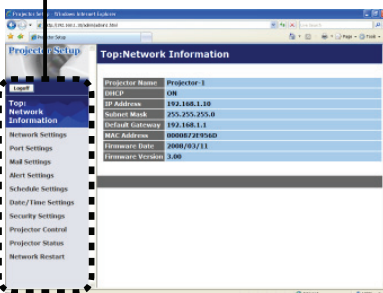


Fig. 3.1.1 b “Logon with Administrator ID”

Main menu

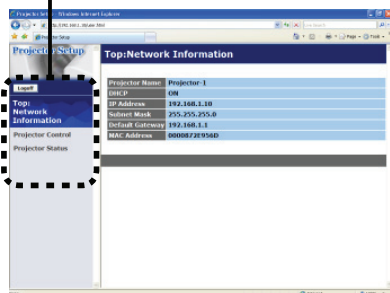
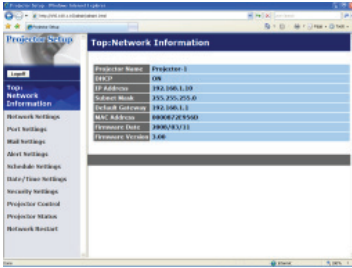


Fig. 3.1.1 c “Logon with User ID”

- 3) Click the desired operation or configuration item on the main menu located on the left-hand side of the screen.

3.1 Configuring and controlling the projector via a web browser (continued)

3.1.2 Network Information



All screen drawings in this manual are shown when you logon with the Administrator ID. Any functions that are available only for the Administrator will not be shown when you logon with the User ID. Refer to the table. (12,13)

Displays the projector's current network configuration settings.

Item	Description
Projector Name	Displays the projector name settings.
DHCP	Displays the DHCP configuration settings.
IP Address	Displays the current IP address.
Subnet Mask	Displays the subnet mask.
Default Gateway	Displays the default gateway.
MAC Address	Displays the ethernet MAC address.
Firmware Date	Displays the network firmware time stamp. This information is only displayed when logged on using an Administrator ID.
Firmware Version	Displays the network firmware version number. This information is only displayed when logged on using an Administrator ID.

3.1 Configuring and controlling the projector via a web browser (continued)

3.1.3 Network Settings



Displays and configures network settings.

Item	Description
IP Configuration	Configures network settings.
DHCP ON	Enables DHCP.
DHCP OFF	Disables DHCP.
IP Address	Configures the IP address when DHCP is disabled.
Subnet Mask	Configures the subnet mask when DHCP is disabled.
Default Gateway	Configures the default gateway when DHCP is disabled.
Projector Name	Configures the name of the projector. The length of the Projector Name can be up to 64 alphanumeric characters. Only alphabets, numbers and following symbols can be used. !"#%&'()*+,-./:;<=>?@[\]^_`{ }~ and space
sysLocation (SNMP)	Configures the location to be referred to when using SNMP. The length of the sysLocation can be up to 255 alphanumeric characters. Only numbers '0-9' and alphabet 'a-z', 'A-Z' can be used.
sysContact (SNMP)	Configures the contact information to be referred to when using SNMP. The length of the sysContact can be up to 255 alphanumeric characters. Only numbers '0-9' and alphabet 'a-z', 'A-Z' can be used.
DNS Server Address	Configures the DNS server address.

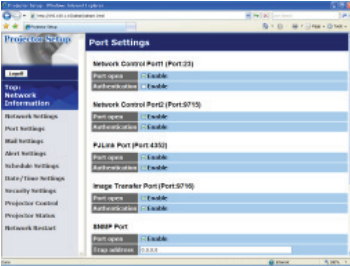
Click **[Apply]** button to save the settings.

NOTE • The new configuration settings are activated after restarting the network connection. When the configuration settings are changed, you must restart the network connection. You can restart the network connection by clicking **[Network Restart]** on the main menu.

- If you connect the projector to an existing network, consult a network administrator before setting server addresses.

3.1 Configuring and controlling the projector via a web browser (continued)

3.1.4 Port Settings



Displays and configures communication port settings.

Item	Description
Network Control Port1 (Port:23)	Configures command control port 1 (Port:23).
Port open	Click the [Enable] check box to use port 23.
Authentication	Click the [Enable] check box when authentication is required for this port.
Network Control Port2 (Port:9715)	Configures command control port 2 (Port:9715).
Port open	Click the [Enable] check box to use port 9715.
Authentication	Click the [Enable] check box when authentication is required for this port.
PJLink™ Port (Port:4352)	Configures the PJLink™ port (Port:4352).
Port open	Click the [Enable] check box to use port 4352.
Authentication	Click the [Enable] check box when authentication is required for this port.
Image Transfer Port (Port:9716)	Configures the image transfer port (Port:9716).
Port open	Click the [Enable] check box to use port 9716.
Authentication	Click the [Enable] check box when authentication is required for this port.

3.1 Configuring and controlling the projector via a web browser (continued)

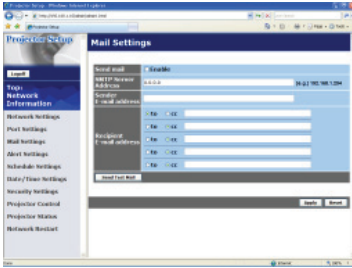
Item	Description
SNMP Port	Configures the SNMP port.
Port open	Click the [Enable] check box to use SNMP.
Trap address	Configures the destination of the SNMP Trap in IP format. • The address allows not only IP address but also domain name if the valid DNS server is setup in the Network Settings . The maximum length of host or domain name is up to 255 characters.
SMTP Port	Configures the SMTP port.
Port open	Click the [Enable] check box to use the e-mail function.
Network Bridge Port	Configures the Bridge port number.
Port Number	Input the port number. Any number between 1024 and 65535 can be set up. It is set to 9717 as the default setting.
Daisy Chain Port	Configures the Daisy Chain port number.
Port Number	Input the port number. Any number between 1024 and 65535 can be set up. It is set to 9718 as the default setting.

Click **[Apply]** button to save the settings.

NOTE • The new configuration settings are activated after restarting the network connection. When the configuration settings are changed, you must restart the network connection. You can restart the network connection by clicking **[Network Restart]** on the main menu.

3.1 Configuring and controlling the projector via a web browser (continued)

3.1.5 Mail Settings



Displays and configures e-mail addressing settings.

Item	Description
Send mail	Click [Enable] check box to use the e-mail function. Configure the conditions for sending e-mail under the Alert Settings.
SMTP Server Address	Configures the address of the mail server in IP format. <ul style="list-style-type: none"> The address allows not only IP address but also domain name if the valid DNS server is setup in the Network Settings. The maximum length of host or domain name is up to 255 characters.
Sender E-mail address	Configures the sender e-mail address. The length of the sender e-mail address can be up to 255 alphanumeric characters.
Recipient E-mail address	Configures the e-mail address of up to five recipients. You can also specify [TO] or [CC] for each address. The length of the recipient e-mail address can be up to 255 alphanumeric characters.

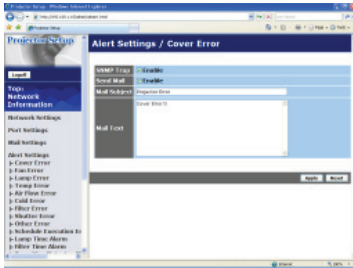
Click **[Apply]** button to save the settings.

NOTE • You can confirm whether the mail settings work correctly using **[Send Test Mail]** button. Please enable Send mail setting before clicking **[Send Test Mail]**.

• If you connect the projector to an existing network, consult a network administrator before setting server addresses.

3.1 Configuring and controlling the projector via a web browser (continued)

3.1.6 Alert Settings



Displays and configures failure & alert settings.

Alert Item	Description
Cover Error	The lamp cover has not been properly fixed.
Fan Error	The cooling fan is not operating.
Lamp Error	The lamp does not light, and there is a possibility that interior portion has become heated.
Temp Error	There is a possibility that the interior portion has become heated.
Air Flow Error	The internal temperature is rising.
Cold Error	There is a possibility that the interior portion has become overcooled.
Filter Error	Filter time over.
Shutter Error	The shutter does not work crectly.
Other Error	Other error. If displaying this error, please contact your dealer.
Schedule Execution Error	Schedule Execution error. (📖21)
Lamp Time Alarm	Lamp time over Alarm Time setting.
Filter Time Alarm	Filter time over Alarm Time setting.
Transition Detector Alarm	Transition Detector Alarm. (📖 OPTION menu in the User's Manual (detailed) – Operating Guide)
Cold Start	The Power switch is turned on. (Off → standby mode)
Authentication Failure	The SNMP access is detected from the invalid SNMP community.


Refer to 📖 **“Troubleshooting” in the User’s Manual (detailed) – Operating Guide** for further detailed explanation of Error except Other Error and Schedule Execution Error.

3.1 Configuring and controlling the projector via a web browser (continued)

The Alert Items are shown below.

Setting Item	Description
Alarm Time	Configures the time to alert. (Only Lamp Time Alarm and Filter Time Alarm .)
SNMP Trap	Click [Enable] check box to enable SNMP Trap alerts.
Send Mail	Click [Enable] check box to enable e-mail alerts. (Except Cold Start and Authentication Failure .)
Mail Subject	Configures the subject line of the e-mail to be sent. The length of the subject line can be up to 100 alphanumeric characters. (Except Cold Start and Authentication Failure .)
Mail Text	Configures the text of the e-mail to be sent. The length of the text can be up to 1024 alphanumeric characters. (Except Cold Start and Authentication Failure .)

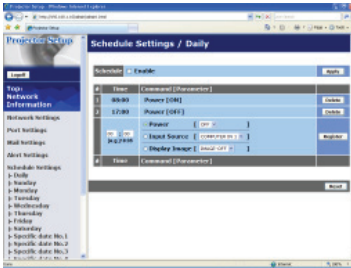
Click **[Apply]** button to save the settings.

NOTE • The trigger of **Filter Error** e-mail is depending on the FILTER MESSAGE setting in the SERVICE item of the OPTION menu which defines the period until the filter message is displayed on the projector screen. The e-mail will be sent when the filter timer exceeds 2000, 5000 or 10000 hours based on the configuration. No notification e-mail will be sent if the FILTER MESSAGE is set to OFF. ( **OPTION menu in the User's Manual (detailed) – Operating Guide**)

- **Lamp Time Alarm** is defined as a threshold for e-mail notification (reminder) of the lamp timer. When the lamp hour exceeds this threshold that is configured through the Web page, the e-mail will be sent out.
- **Filter Time Alarm** is defined as a threshold for e-mail notification (reminder) of the filter timer. When the filter hour exceeds this threshold, the e-mail will be sent out.

3.1 Configuring and controlling the projector via a web browser (continued)

3.1.7 Schedule Settings



Displays and configures schedule settings.

Item	Description
Daily	Configures the daily schedule.
Sunday	Configures the Sunday schedule.
Monday	Configures the Monday schedule.
Tuesday	Configures the Tuesday schedule.
Wednesday	Configures the Wednesday schedule.
Thursday	Configures the Thursday schedule.
Friday	Configures the Friday schedule.
Saturday	Configures the Saturday schedule.
Specific date No.1	Configures the specific date (No.1) schedule.
Specific date No.2	Configures the specific date (No.2) schedule.
Specific date No.3	Configures the specific date (No.3) schedule.
Specific date No.4	Configures the specific date (No.4) schedule.
Specific date No.5	Configures the specific date (No.5) schedule.

3.1 Configuring and controlling the projector via a web browser (continued)

The schedule settings are shown below.

Item	Description
Schedule	Click [Enable] check box to enable the schedule.
Date (Month/Day)	Configures the month and date. This item appears only when Specific date (No. 1-5) is selected.

Click **[Apply]** button to save the settings.

The current event settings are displayed on the schedule list. To add additional functions and events, set the following items.

Item	Description
Time	Configures the time to execute commands.
Command [Parameter]	Configures the commands to be executed.
Power	Configures the parameters for power control.
Input Source	Configures the parameters for input switching.
Display Image	Configures the parameters for display of transfered image data (📖39).

Click **[Register]** button to add new commands to the schedule list.

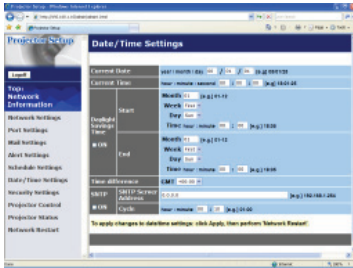
Click **[Delete]** button to delete commands from the schedule list.

Click **[Reset]** button to delete all commands and reset the schedule settings from the schedule list.

NOTE • After the projector is moved, check the date and time set for the projector before configuring the schedules. Strong shock may make the date and time settings ([📖23](#)) get out of tune.

3.1 Configuring and controlling the projector via a web browser (continued)

3.1.8 Date/Time Settings



Displays and configures the date and time settings.

Item	Description				
Current Date	Configures the current date in year/month/day format.				
Current Time	Configures the current time in hour:minute:second format.				
Daylight Savings Time	Click [ON] check box to enable daylight savings time and set the following items.				
Start	Configures the date and time daylight savings time begins.				
Month	Configures the month daylight savings time begins (1~12).				
Week	Configures the week of the month daylight savings time begins (First, 2, 3, 4, Last).				
Day	Configures the day of the week daylight savings time begins (Sun, Mon, Tue, Wed, Thu, Fri, Sat).				
Time	<table border="1"> <tr> <td>hour</td> <td>Configures the hour daylight savings time begins (0 ~ 23).</td> </tr> <tr> <td>minute</td> <td>Configures the minute daylight savings time begins (0 ~ 59).</td> </tr> </table>	hour	Configures the hour daylight savings time begins (0 ~ 23).	minute	Configures the minute daylight savings time begins (0 ~ 59).
hour	Configures the hour daylight savings time begins (0 ~ 23).				
minute	Configures the minute daylight savings time begins (0 ~ 59).				
End	Configures the date and time daylight savings time ends.				
Month	Configures the month daylight savings time ends (1 ~ 12).				
Week	Configures the week of the month daylight savings time ends (First, 2, 3, 4, Last).				
Day	Configures the day of the week daylight savings time ends (Sun, Mon, Tue, Wed, Thu, Fri, Sat).				
Time	<table border="1"> <tr> <td>hour</td> <td>Configures the hour daylight savings time ends (0 ~ 23).</td> </tr> <tr> <td>minute</td> <td>Configures the minute daylight savings time ends (0 ~ 59).</td> </tr> </table>	hour	Configures the hour daylight savings time ends (0 ~ 23).	minute	Configures the minute daylight savings time ends (0 ~ 59).
hour	Configures the hour daylight savings time ends (0 ~ 23).				
minute	Configures the minute daylight savings time ends (0 ~ 59).				

3.1 Configuring and controlling the projector via a web browser (continued)

Item	Description				
Time difference	Configures the time difference. Set the same time difference as the one set on your PC. If unsure, consult your IT manager.				
SNTP	Click the [ON] check box to retrieve Date and Time information from the SNTP server and set the following items. <table border="1" data-bbox="115 392 1046 598"> <tbody> <tr> <td data-bbox="115 392 378 536">SNTP Server Address</td> <td data-bbox="378 392 1046 536">Configures the SNTP server address in IP format. <ul style="list-style-type: none"> • The address allows not only IP address but also domain name if the valid DNS server is setup in the Network Settings. The maximum length of host or domain name is up to 255 characters. </td> </tr> <tr> <td data-bbox="115 536 378 598">Cycle</td> <td data-bbox="378 536 1046 598">Configures the interval at which to retrieve Date and Time information from the SNTP server (hour:minute).</td> </tr> </tbody> </table>	SNTP Server Address	Configures the SNTP server address in IP format. <ul style="list-style-type: none"> • The address allows not only IP address but also domain name if the valid DNS server is setup in the Network Settings. The maximum length of host or domain name is up to 255 characters. 	Cycle	Configures the interval at which to retrieve Date and Time information from the SNTP server (hour:minute).
SNTP Server Address	Configures the SNTP server address in IP format. <ul style="list-style-type: none"> • The address allows not only IP address but also domain name if the valid DNS server is setup in the Network Settings. The maximum length of host or domain name is up to 255 characters. 				
Cycle	Configures the interval at which to retrieve Date and Time information from the SNTP server (hour:minute).				

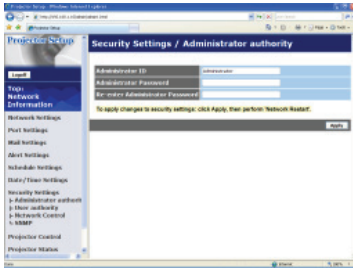
Click **[Apply]** button to save the settings.

NOTE • The new configuration settings are activated after restarting the network connection. When the configuration settings are changed, you must restart the network connection. You can restart the network connection by clicking **[Network Restart]** on the main menu.

- If you connect the projector to an existing network, consult a network administrator before setting server addresses.
- To enable the SNTP function, the time difference must be set.
- The projector will retrieve Date and Time information from the time server and override time settings when SNTP is enabled.
- The internal clock's time may not remain accurate. Using SNTP is recommended to maintain accurate time.

3.1 Configuring and controlling the projector via a web browser (continued)

3.1.9 Security Settings



Displays and configures passwords and other security settings.

Item	Description
Administrator authority	Configures the Administrator ID and password.
Administrator ID	Configures the Administrator ID. The length of the text can be up to 32 alphanumeric characters.
Administrator Password	Configures the Administrator password. The length of the text can be up to 255 alphanumeric characters.
Re-enter Administrator Password	Reenter the above password for verification.
User authority	Configures the User ID and password.
User ID	Configures the User ID. The length of the text can be up to 32 alphanumeric characters.
User Password	Configures the User password. The length of the text can be up to 255 alphanumeric characters.
Re-enter User Password	Reenter the above password for verification.

3.1 Configuring and controlling the projector via a web browser (continued)

Item	Description
Network Control	Configures the Authentication password for the command control.
Authentication Password	Configures the Authentication password. The length of the text can be up to 32 alphanumeric characters.
Re-enter Authentication Password	Reenter the above password for verification.
SNMP	Configures the community name if SNMP is used.
Community name	Configures the community name. The length of the text can be up to 64 alphanumeric characters.

Click **[Apply]** button to save the settings.

NOTE • The new configuration settings are activated after restarting the network connection. When the configuration settings are changed, you must restart the network connection. You can restart the network connection by clicking **[Network Restart]** on the main menu.

- Only numbers '0-9' and alphabet 'a-z', 'A-Z' can be used.

3.1 Configuring and controlling the projector via a web browser (continued)

3.1.10 Projector Control



The items shown in the table below can be performed using the Projector Control menu. Select an item using the up and down arrow keys on the PC.

Most of the items have a submenu. Refer to the table below for details.

NOTE • The setting value may not match with the actual value if the user changes the value manually. In that case, please refresh the page by clicking [Refresh] button.

Controls the projector.

Item	Description
Main	
Power	Turns the power on/off.
Input Source	Selects the input source.
Picture Mode	Selects the picture mode setting.
Blank On/Off	Turns Blank on/off.
Freeze	Turns Freeze on/off.
Magnify	Controls the magnify setting. In some input signal sources, it might stop “Magnify” even though it does not reach to maximum setting value.
Template	Turns template on/off.
Shutter	Open / close the shutter.
Zoom	Adjusts the zoom setting.
Focus	Adjusts the focus setting.
Lens Shift V	Adjusts the vertical lens shift.
Lens Shift H	Adjusts the horizontal lens shift.
Lens Memory	Saves / Loads the Lens Memory data.
P by P	Turns the P by P on / off.
P by P Left Source	Selects the P by P Left Source setting.
P by P Right Source	Selects the P by P Right Source setting.
P by P Main Area	Selects the P by P Main Area Source setting.
MY Image	Select MY IMAGE data.
MY Image Delete	Delete MY IMAGE data.
Picture	
Brightness	Adjusts the brightness setting.
Contrast	Adjusts the contrast setting.

3.1 Configuring and controlling the projector via a web browser (continued)

Item	Description
Picture (continue)	
Gamma	Selects the gamma setting.
Color Temp	Selects the color temperature setting.
Color	Adjusts the color setting.
Tint	Adjusts the tint setting.
Sharpness	Adjusts the sharpness setting.
Active Iris	Selects the active iris setting.
Active Iris - Manual	Adjusts the active iris - manual setting.
MyMemory Save	Saves the MyMemory data.
MyMemory Recall	Recalls the MyMemory data.
Image	
Aspect	Selects the aspect setting.
Over Scan	Adjusts the over scan setting.
V Position	Adjusts the vertical position.
H Position	Adjusts the horizontal position.
H Phase	Adjusts the horizontal phase.
H Size	Adjusts the horizontal size.
Auto Adjust Execute	Performs the automatic adjustment.
Input	
Progressive	Selects the progressive setting.
Video NR	Selects the video noise reduction setting.
3D-YCS	Selects the 3D-YCS setting.
Color Space	Selects the color space.
Component	Selects the Component port setting.
Video 1 Format	Selects the video 1 format setting.
Video 2 Format	Selects the video 2 format setting.
S-Video Format	Selects the s-video format setting.
HDMI Format	Selects the HDMI format setting.
DVI-D Format	Selects the DVI-D format setting.
HDMI Range	Selects the HDMI range setting.
DVI-D Range	Selects the DVI-D range setting.
Computer in 1	Selects the Computer in 1 input signal type.
Computer in 2	Selects the Computer in 2 input signal type.
BNC	Selects the BNC input signal type.
Frame Lock-Computer in 1	Turns the FRAME LOCK-COMPUTER IN1 function on/off.
Frame Lock-Computer in 2	Turns the FRAME LOCK-COMPUTER IN2 function on/off.
Frame Lock-BNC	Turns the FRAME LOCK-BNC function on/off.
Frame Lock-HDMI	Turns the FRAME LOCK-HDMI function on/off.
Frame Lock-DVI-D	Turns the FRAME LOCK-DVI-D function on/off.

3.1 Configuring and controlling the projector via a web browser (continued)

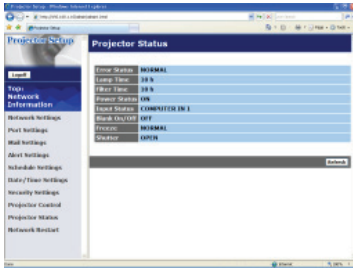
Item	Description
Setup	
Auto Keystone Execute	Performs the automatic keystone distortion setting.
Keystone V	Adjusts the vertical keystone distortion setting.
Keystone H	Adjusts the horizontal keystone distortion setting.
Eco Mode	Selects the eco mode.
Mirror	Selects the mirror status.
Monitor Out - Computer in 1	Assigns the MONITOR OUT when the COMPUTER IN1 input port is selected.
Monitor Out - Computer in 2	Assigns the MONITOR OUT when the COMPUTER IN2 input port is selected.
Monitor Out - BNC	Assigns the MONITOR OUT when the BNC input port is selected.
Monitor Out - HDMI	Assigns the MONITOR OUT when the HDMI input port is selected.
Monitor Out - DVI-D	Assigns the MONITOR OUT when the DVI-D input port is selected.
Monitor Out - Component	Assigns the MONITOR OUT when the Component input port is selected.
Monitor Out - S-Video	Assigns the MONITOR OUT when the S-VIDEO input port is selected.
Monitor Out - Video 1	Assigns the MONITOR OUT when the VIDEO 1 input port is selected.
Monitor Out - Video 2	Assigns the MONITOR OUT when the VIDEO 2 input port is selected.
Monitor Out - Standby	Assigns the MONITOR OUT in the standby mode.
Screen	
Language	Selects the language for the OSD.
Menu Position V	Adjusts the vertical Menu position.
Menu Position H	Adjusts the horizontal Menu position.
Blank	Selects the Blank mode.
Startup	Selects the startup screen mode.
MyScreen Lock	Turns MyScreen lock function on/off.
Message	Turns the message function on/off.
Template	Selects the template setting.
C.C. - Display	Selects Closed Caption DISPLAY setting.
C.C. - Mode	Selects Closed Caption MODE setting.
C.C. - Channel	Selects Closed Caption CHANNEL setting.

3.1 Configuring and controlling the projector via a web browser (continued)

Item	Description
Option	
Source Skip - Computer in1	Selects the Source Skip - COMPUTER IN1 setting.
Source Skip - Computer in2	Selects the Source Skip - COMPUTER IN2 setting.
Source Skip - BNC	Selects the Source Skip - BNC setting.
Source Skip - HDMI	Selects the Source Skip - HDMI setting.
Source Skip - DVI-D	Selects the Source Skip - DVI-D setting.
Source Skip - Component	Selects the Source Skip - COMPONENT setting.
Source Skip - S-Video	Selects the Source Skip - S-VIDEO setting.
Source Skip - Video 1	Selects the Source Skip - VIDEO 1 setting.
Source Skip - Video 2	Selects the Source Skip - VIDEO 2 setting.
Auto Search	Turns the automatic signal search function on/off.
Auto Keystone	Turns the automatic keystone distortion correction function on/off.
Direct On	Turns the direct on function on/off.
Auto Off	Configures the timer to shut off the projector when no signal is detected.
Shutter Timer	Selects the shutter timer setting.
My Button-1	Assigns the functions for the MY BUTTON1 button on the included remote control.
My Button-2	Assigns the functions for the MY BUTTON2 button on the included remote control.
My Button-3	Assigns the functions for the MY BUTTON3 button on the included remote control.
My Button-4	Assigns the functions for the MY BUTTON4 button on the included remote control.
My Source	Selects the My Source setting.
Remote Receiv. Front	Turns the remote receiv. front function on/off.
Remote Receiv. Rear	Turns the remote receiv. rear function on/off.
Remote Receiv. Top	Turns the remote receiv. top function on/off.
Remote Freq. Normal	Turns the remote control signal frequency normal function on/off.
Remote Freq. High	Turns the remote control signal frequency high function on/off.
Remote ID	Selects Remote ID setting.

3.1 Configuring and controlling the projector via a web browser (continued)

3.1.11 Projector Status

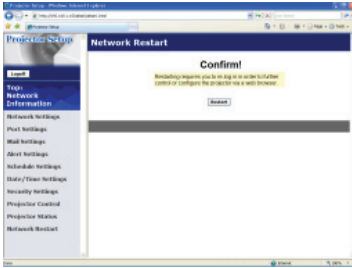


Displays the current projector status.

Item	Description
Error Status	Displays the current error status
Lamp Time	Displays the usage time for the current lamp.
Filter Time	Displays the usage time for the current filter.
Power Status	Displays the current power status.
Input Status	Displays the current input signal source.
Blank On/Off	Displays the current Blank on/off status.
Freeze	Displays the current Freeze status.
Shutter	Displays the current Shutter status.

3.1 Configuring and controlling the projector via a web browser (continued)

3.1.12 Network Restart



Restarts the projector's network connection.

Item	Description
Restart	Restarts the projector's network connection in order to activate new configuration settings.

NOTE • Restarting requires you to re-log on in order to further control or configure the projector via a web browser. Wait 1 minute or more after clicking **[Restart]** button to log on again.

- The Logon menu (📖13) is displayed after restarting the projector's network connection if the DHCP is set to ON.

3.1.13 Logoff

When **[Logoff]** is clicked, the Logon menu is displayed. (📖13)

3.2 E-mail Alerts

The projector can automatically send an alert message to the specified e-mail addresses when the projector detects a certain condition that is requiring maintenance or detected an error.

NOTE • Up to five e-mail addresses can be specified.
 • The projector may be not able to send e-mail if the projector suddenly loses power.

Mail Settings (📖18)

To use the projector's e-mail alert function, please configure the following items through a web browser.

Example: If the IP address of the projector is set to **192.168.1.10**:

- 1) Enter “**http://192.168.1.10/**” into the address bar of the web browser.
- 2) Enter the Administrator ID and password and click **[Logon]**.
- 3) Click **[Port Settings]** on the main menu.
- 4) Click **[Enable]** check box to open the SMTP Port.
- 5) Click **[Apply]** button to save the settings.

NOTE • A Network Restart is required after the **SMTP Port** configuration settings have changed. Click **[Network Restart]** and configure the following items.

- 6) Click **[Mail Settings]** and configure each item. Refer to the item **3.1.5 Mail Settings (📖18)** for further information.
- 7) Click **[Apply]** button to save the settings.

NOTE • Click **[Send Test Mail]** button in **[Mail Settings]** to confirm that the e-mail settings are correct. The following mail will be delivered to the specified addresses.

Subject line	:Test Mail	<Projector name>
Text	:Send Test Mail	
	Date	<Testing date>
	Time	<Testing time>
	IP Address	<Projector IP address>
	MAC Address	<Projector MAC address>

3.2 E-mail Alerts (continued)

- 8) Click **[Alert Settings]** on the main menu to configure the E-mail Alerts settings.
- 9) Select and configure each alert item. Refer to the item **3.1.6 Alert Settings** (📖19) for further information.
- 10) Click **[Apply]** button to save the settings.

Failure/Warning e-mails are formatted as follows:

Subject line	: <Mail title>	<Projector name>
Text	: <Mail text>	
	Date	<Failure/Warning date>
	Time	<Failure/Warning time>
	IP Address	<Projector IP address>
	MAC Address	<Projector MAC address>

3.3 Projector Management using SNMP

The SNMP (Simple Network Management Protocol) enables to manage the projector information, which is a failure or warning status, from the computer on the network. The SNMP management software will be required on the computer to use this function.

NOTE • It is recommended that SNMP functions be carried out by a network administrator.
 • SNMP management software must be installed on the computer to monitor the projector via SNMP.

SNMP Settings (📖16)

Configure the following items via a web browser to use SNMP.

Example: If the IP address of the projector is set to **192.168.1.10**:

- 1) Enter “**http://192.168.1.10/**” into the address bar of the web browser.
- 2) Enter the Administrator ID and Password and click [**Logon**].
- 3) Click [**Port Settings**] on the main menu.
- 4) Click [**Enable**] check box to open the **SNMP Port**. Set the IP address to send the SNMP trap to when a Failure/Warning occurs.

NOTE • A Network Restart is required after the **SNMP Port** configuration settings have been changed. Click [**Network Restart**] and configure the following items.

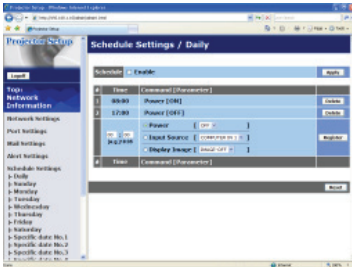
- 5) Click [**Security Settings**] on the main menu.
- 6) Click [**SNMP**] and set the community name on the screen that is displayed.

NOTE • A Network Restart is required after the **Community name** has been changed. Click [**Network Restart**] and configure the following items.

- 7) Configure the settings for Trap transmission of Failures/Warnings. Click [**Alert Settings**] on the main menu and select the Failure/Warning item to be configured.
- 8) Click [**Enable**] check box to send out the SNMP trap for Failures/Warnings. Clear [**Enable**] check box when SNMP trap transmission is not required.
- 9) Click [**Apply**] button to save the settings.

3.4 Event Scheduling

The scheduling function enables to setup scheduled events including power on / power off. It enables to be “self-management” projector.



- NOTE** • You can schedule the following control events: Power ON/OFF, Input Source and Transferred Image Display.
- The power on / off event has the lowest priority among the all events that are defined at the same time.
 - There are 3 types of Scheduling, 1) daily 2) weekly 3) specific date. (📖21)
 - The priority for scheduled events is as follows 1) specific date 2) weekly 3) daily.
 - Up to five specific dates are available for scheduled events. Priority is given to those with the lower numbers when more than one event has been scheduled for the same date and time (e.g., ‘Specific date No. 1’ has priority over ‘Specific date No. 2’ and so on).
 - Be sure to set the date and time before enabling scheduled events. (📖23)

3.4 Event Scheduling (continued)

Schedule Settings (📖21)

Schedule settings can be configured from a web browser.

Example: If the IP address of the projector is set to **192.168.1.10**:

- 1) Enter “**http://192.168.1.10/**” into the address bar of the web browser.
- 2) Enter the Administrator ID and password and click [**Logon**].
- 3) Click [**Schedule Settings**] on the main menu and select the required schedule item. For example, if you want to perform the command every Sunday, please select [**Sunday**].
- 4) Click [**Enable**] check box to enable scheduling.
- 5) Enter the date (month/day) for specific date scheduling.
- 6) Click [**Apply**] button to save the settings.
- 7) After configure the time, command and parameters, click [**Register**] to add the new event.
- 8) Click [**Delete**] button when you want to delete a schedule.

There are three types of scheduling.

- 1) Daily: Perform the specified operation at a specified time every day.
- 2) Sunday ~ Saturday: Perform the specified operation at the specified time on a specified day of the week.
- 3) Specific date: Perform the specified operation on the specified date and time.

NOTE • In Standby mode the power indicator will flash green for approx. 3 seconds when at least 1 “Power ON” schedule is saved.

- When the schedule function is used, the power cord must be connected to the projector and the outlet and the power switch must be turned on, [I]. The schedule function does not work when the power switch is turned off, [O] or the breaker in a room is tripped. The power indicator will lights orange or green when the projector gets is receiving the power.

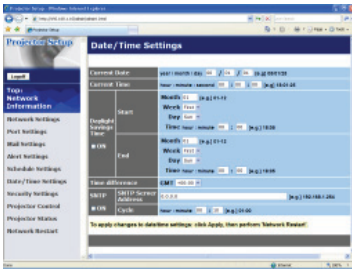
3.4 Event Scheduling (continued)

Date/Time Settings (📖23)

The Date/Time setting can be adjusted via a web browser.

Example: If the IP address of the projector is set to **192.168.1.10**:

- 1) Enter “**http://192.168.1.10/**” into the address bar of the web browser. Enter the Administrator ID and Password and click [**Logon**].
- 2) Click [**Date/Time Settings**] on the main menu and configure each item. Refer to the item **3.1.8 Data/Time Settings** for further information.
- 3) Click [**Apply**] button to save the settings.



NOTE • A Network Restart is required after the **Daylight Savings Time** or **SNTP** configuration settings have been changed.

- The battery for the built in clock may be dead if the clock loses time even when the date and time have been set correctly. Replace the battery by following “**Internal clock battery**” **section of the User’s Manual (concise)**.
- The internal clock’s time may not remain accurate. Using SNTP is recommended to maintain accurate time.

3.5 MY IMAGE (Still Image Transfer) Display

The projector can display still images that are transferred via the network.

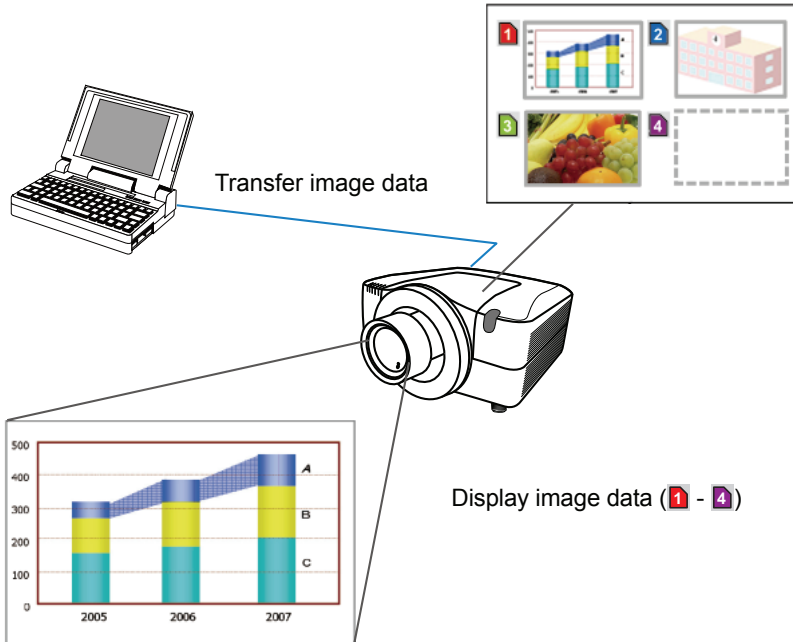


Fig. 3.5 Still Image Transfer

MY IMAGE transmission requires an exclusive application for your PC. You can download it from the Hitachi web site (<http://hitachi.us/digitalmedia> or <http://www.hitachidigitalmedia.com>). Refer to the manual for the application for instructions.

To display the transferred image, select the MY IMAGE item in the NETWORK menu. For more information, please see the description of the MY IMAGE item of the NETWORK menu. ([📖 NETWORK menu in User's Manual \(detailed\) – Operating Guide](#))

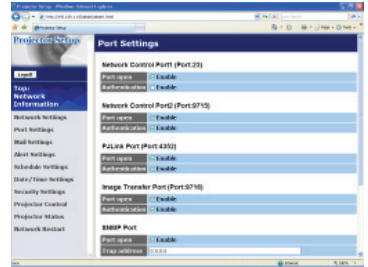
NOTE • It is possible to allocate the image file up to 4 in the maximum.
 • The image file also can be displayed by using schedule function from the web browser. Refer to the item [3.4 Event Scheduling](#) ([📖 36](#)) in detail.

3.5 MY IMAGE (Still Image Transfer) Display (continued)

Configure the following items from a web browser when MY IMAGE is used.

Example: If the IP address of the projector is set to **192.168.1.10**:

- 1) Enter "**http://192.168.1.10/**" into the address bar of the web browser.
- 2) Enter the Administrator ID and password and click **[Logon]**.
- 3) Click **[Port Settings]** on the main menu.
- 4) Click the **[Enable]** check box to open the **Image Transfer Port (Port: 9716)**. Click the **[Enable]** check box for the **[Authentication]** setting when authentication is required, otherwise clear the check box.
- 5) Click the **[Apply]** button to save the settings.



When the authentication setting is enabled, the following settings are required.

- 6) Click **[Security Settings]** on the main menu.
- 7) Select **[Network Control]** and enter the desired authentication password.
- 8) Click the **[Apply]** button to save the settings.

NOTE • The Authentication Password will be the same for **Network Control Port1 (Port: 23)**, **Network Control Port2 (Port: 9715)**, and **Image Transfer Port (Port: 9716)**.

• The new configuration settings are activated after restarting the network connection. When the configuration settings are changed, you must restart the network connection. You can restart the network connection by clicking **[Network Restart]** on the main menu.

3.6 Command Control via the Network

You can configure and control the projector via the network using RS-232C commands.

Communication Port

The following two ports are assigned for the command control.

TCP #23

TCP #9715

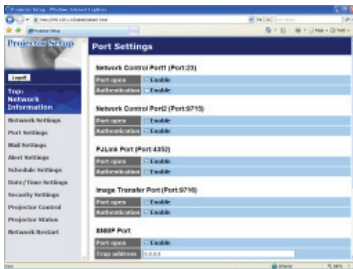
NOTE • Command control is not available via communication port (TCP #9716) (📖16) that is used for the MY IMAGE transmission function.

Command Control Settings (📖16)

Configure the following items from a web browser when command control is used.

Example: If the IP address of the projector is set to **192.168.1.10**:

- 1) Enter “**http://192.168.1.10/**” into the address bar of the web browser.
- 2) Enter the Administrator ID and password and click **[Logon]**.
- 3) Click **[Port Settings]** on the main menu.



- 4) Click **[Enable]** check box to open **Network Control Port1 (Port: 23)** to use TCP #23. Click **[Enable]** check box for **[Authentication]** setting when authentication is required, otherwise clear the check box.
- 5) Click **[Enable]** check box to open **Network Control Port2 (Port: 9715)** to use TCP #9715. Click **[Enable]** check box for **[Authentication]** setting when authentication is required, otherwise clear the check box.
- 6) Click **[Apply]** button to save the settings.

3.6 Command Control via the Network (continued)

When the authentication setting is enabled, the following settings are required.

(25)

- 7) Click [**Security Settings**] on the main menu.
- 8) Click [**Network Control**] and enter the desired authentication password.
 - * See NOTE.
- 9) Click [**Apply**] button to save the settings.

NOTE • The Authentication Password will be the same for **Network Control Port1 (Port: 23)**, **Network Control Port2 (Port: 9715)**, and **Image Transfer Port (Port: 9716)**.

• The new configuration settings are activated after restarting the network connection. When the configuration settings are changed, you must restart the network connection. You can restart the network connection by clicking [**Network Restart**] on the main menu.

3.6 Command Control via the Network (continued)

Command Format

Command formats differ among the different communication ports.

- TCP #23

You can use the RS-232C commands without any changes. The reply data format is the same as the RS-232C commands. However, the following reply will be sent back in the event of authentication failure when authentication is enabled.

<Reply in the event of an authentication error>

Reply	Error code	
0x1F	0x04	0x00

- TCP #9715

Send Data format

The following formatting is added to the header (0x02), Data length (0x0D), Checksum (1byte) and Connection ID (1 byte) of the RS-232C commands.

Header	Data length	RS-232C command	Check Sum	Connection ID
0x02	0x0D	13 bytes	1 byte	1 byte

Header → 0x02, Fixed

Data length → RS-232C commands byte length (0x0D, Fixed)

RS-232C commands → RS-232C commands that start with 0xBE 0xEF (13 bytes)

Check Sum → This is the value to make zero on the addition of the lower 8 bits from the header to the checksum.

Connection ID → Random value from 0 to 255 (This value is attached to the reply data)

3.6 Command Control via the Network (continued)

Reply Data format

The connection ID (the data is same as the connection ID data on the sending data format) is attached to the RS-232C commands reply data.

<ACK reply>

Reply	Connection ID
0x06	1 byte

<NAK reply>

Reply	Connection ID
0x15	1 byte

<Error reply>

Reply	Error code	Connection ID
0x1C	2 bytes	1 byte

<Data reply>

Reply	Data	Connection ID
0x1D	2 bytes	1 byte

<Projector busy reply>

Reply	Status code	Connection ID
0x1F	2 bytes	1 byte

<Authentication error reply>

Reply	Authentication Error code		Connection ID
0x1F	0x04	0x00	1 byte

3.6 Command Control via the Network (continued)

Automatic Connection Break

The TCP connection will be automatically disconnected after there is no communication for 30 seconds after being established.

Authentication

The projector does not accept commands without authentication success when authentication is enabled. The projector uses a challenge response type authentication with an MD5 (Message Digest 5) algorithm.

When the projector is using a LAN, a random 8 bytes will be returned if authentication is enabled. Bind this received 8 bytes and the Authentication Password and digest this data with the MD5 algorithm and add this in front of the commands to send.

Following is a sample if the Authentication Password is set to “password” and the random 8 bytes are “a572f60c”.

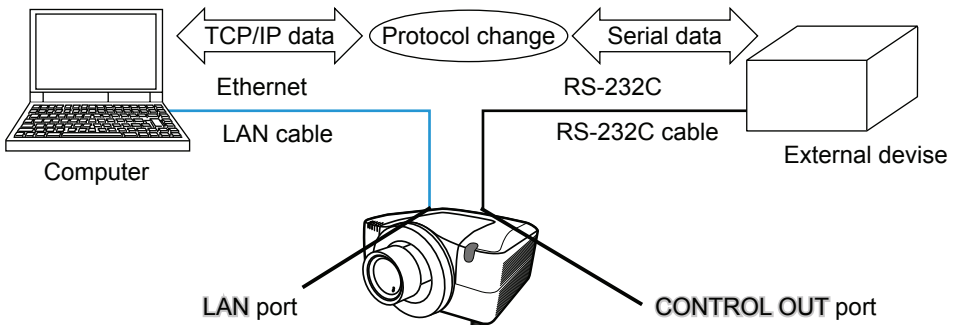
- 1) Select the projector.
- 2) Receive the random 8 bytes “a572f60c” from the projector.
- 3) Bind the random 8 bytes “a572f60c” and the Authentication Password “password” and it becomes “a572f60cpassword”.
- 4) Digest this bind “a572f60cpassword” with MD5 algorithm.
It will be “e3d97429adffa11bce1f7275813d4bde”.
- 5) Add this “e3d97429adffa11bce1f7275813d4bde” in front of the commands and send the data.
Send “e3d97429adffa11bce1f7275813d4bde”+command.
- 6) When the sending data is correct, the command will be performed and the reply data will be returned. Otherwise, an authentication error will be returned.

NOTE • As for the transmission of the second or subsequent commands, the authentication data can be omitted when the same connection.

3.7 Controlling the external device via the projector (using the NETWORK BRIDGE function)

This projector is equipped with the **NETWORK BRIDGE** function to perform mutual conversion of a network protocol and a serial interface.


Using the **NETWORK BRIDGE** function, a computer that is connected with this projector by Ethernet communication can control an external device that is connected with this projector by RS-232C communication as a network terminal.



3.7.1 Connecting devices

- 1) Connect the projector's **LAN** port and the computer's LAN port with a LAN cable, for Ethernet communication.
- 2) Connect the projector's **CONTROL OUT** port and the device's RS-232C port with an RS-232C cable, for RS-232C communication.

NOTE • Before connecting the devices, read the manuals for the devices to ensure the connection.

For RS-232C connection, check the specifications of each port and use the suitable cable. ( **Operating Guide - Technical - Connection to the ports**)

3.7.2 Communication setup

- 1) Using the SERIAL OUT SETTING menu, select the proper baud rate and parity for the CONTROL OUT port, according to the specification of the RS-232C port of the connected device. ([📖 Operating Guide - OPTION menu - SERVICE – COMMUNICATION – SERIAL IN SETTING/SERIAL OUT SETTING](#))

Item	Condition
BAUD RATE	4800bps/9600bps/19200bps/38400bps
PARITY	NONE/ODD/EVEN
Data length	8 bit (fixed)
Start bit	1 bit (fixed)
Stop bit	1 bit (fixed)

- 2) Using the COMMUNICATION TYPE menu, select the NETWORK BRIDGE for the CONTROL OUT port. ([📖 Operating Guide - OPTION menu - SERVICE – COMMUNICATION – COMMUNICATION TYPE](#))
- 3) Using the COMMUNICATION METHOD menu set up the proper method for the CONTROL OUT port, according to your use. ([📖 Operating Guide - OPTION menu - SERVICE – COMMUNICATION – COMMUNICATION METHOD](#))

NOTE • The OFF is selected for the COMMUNICATION TYPE as the default setting.
 • Using the COMMUNICATION menu, set up the communication. Remember that an unsuitable setup could cause malfunction of communication.


3.7.3 Communication port

For the NETWORK BRIDGE function, send the data from the computer to the projector with using the Network Bridge Port that is configured in the “Port Settings” of web browser. ([📖 3.1.4 Port settings – Network Bridge Port](#))

NOTE • Any number between 1024 and 65535 can be set up as the Network Bridge port number. It is set to 9717 as the default setting.

3.7.4 Communication method

The communication method can be selected from the menus, only when the NETWORK BRIDGE is selected for the COMMUNICATION TYPE.

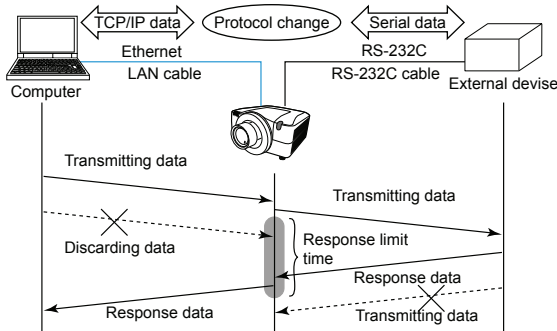
( **Operating Guide - OPTION menu - SERVICE – COMMUNICATION – TRANSMISSION METHOD**)



HALF-DUPLEX ↔ FULL-DUPLEX

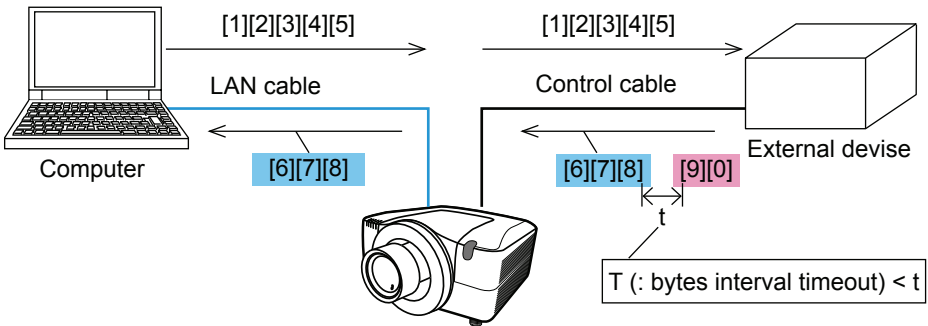
3.7.4.1 HALF-DUPLEX

This method lets the projector make two way communication, but only one direction, either transmitting or receiving data, is allowed at a time. The method does not allow the projector to receive the data from the computer while waiting for response data from an external device. After the projector receives the response data from an external device or the response limit time is past, the projector can receive the data from the computer. That means that the projector controls transmitting and receiving the data to synchronize the communication.

To use the HALF-DUPLEX method, set up the RESPONSE LIMIT TIME and BYTES INTERVAL TIMEOUT, following the instruction below.



- 1) Using the RESPONSE LIMIT TIME menu, set the waiting time for response data from an external device. ( **Operating Guide - OPTION menu - SERVICE – COMMUNICATION – RESPONSE LIMIT TIME**)
OFF ↔ 1s ↔ 2s ↔ 3s (↔ OFF)
- 2) If the response data from an external device is blank in a certain time period (BYTES INTERVAL TIMEOUT), the projector judges that the response data is finished, and starts to send data again. If a blank time in the response data is longer than the BYTES INTERVAL TIMEOUT, the projector cannot receive all data, then the computer may not be able to control an external device well. Using the BYTES INTERVAL TIMEOUT menu, set the waiting time for response data to match your system. ( **Operating Guide - OPTION menu - SERVICE – COMMUNICATION – BYTES INTERVAL TIMEOUT**)
50ms ↔ 100ms ↔ 150ms ↔ 200ms (↔ 50ms)



NOTE • With using the HALF-DUPLEX method, the projector can send out 254 byte data as maximum at once.
 • If it is not required to monitor the response data from an external device and the RESPONSE LIMIT TIME is set to OFF, the projector can receive the data from the computer and send it out to an external device continuously. The OFF is selected as the default setting.

3.7.4.2 FULL-DUPLEX

This method lets the projector make two way communication, transmitting and receiving data at the same time, without monitoring response data from an external device.

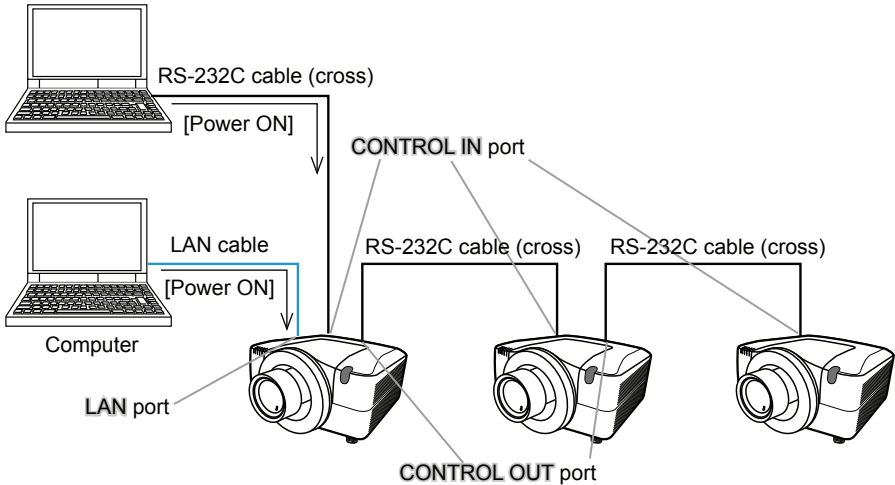
With using this method, the computer and an external device will send the data out of synchronization. If it is required to synchronize them, set the computer to make the synchronization.

NOTE • In case that the computer controls to synchronize transmitting and receiving the data, it may not be able to control an external device well depending on the processing status of the projector.

3.8 Batch-controlling multiple projectors (using the DAISY CHAIN function)

This model and its family models (ask your dealer for details) are equipped with the DAISY CHAIN function.

Using the DAISY CHAIN function can simultaneously control multiple projectors connected to a shared RS-232C bus, from a computer.





3.8.1 Connecting devices

- 1) Connect one of the projectors to be controlled to the computer.
 Connect the projector's **LAN** port and the computer's LAN port with a LAN cable, for Ethernet communication.
 Connect the projector's **CONTROL IN** port and the computer's RS-232C port with an RS-232C cable, for RS-232C communication.
- 2) Connect the **CONTROL OUT** port of the projector connected to the computer and the **CONTROL IN** port of the 2nd projector, with an RS-232C cable.
 Then connect the **CONTROL OUT** port of the 2nd projector and **CONTROL IN** port of the 3rd projector.
 Connect all projectors in turn, in the same way.

NOTE • Turn off (the power switch of) both the projector and other devices and unplug, before connecting them.
 • Do not apply the DAISY CHAIN function to the system that uses a RS-232C bus distributor.

3.8.2 Communication setup

- 1) Set up the communication condition of the **CONTROL IN** port of the projector to be connected to the computer by RS-232C communication, according to the specifications of the computer's RS-232C port.
Using the SERIAL IN SETTING menu, select the proper baud rate and parity.
( **Operating Guide - OPTION menu - SERVICE – COMMUNICATION – SERIAL IN SETTING/SERIAL OUT SETTING**)
- 2) Set up the same condition of the **CONTROL IN** port and the **CONTROL OUT** port connected each other with the same RS-232C cable.
Use the SERIAL IN SETTING menu for the **CONTROL IN** ports, and the SERIAL OUT SETTING menu for the **CONTROL OUT** ports, to set up the baud rate and parity. ( **Operating Guide - OPTION menu - SERVICE – COMMUNICATION – SERIAL IN SETTING/SERIAL OUT SETTING**)

Communication condition

Item	Condition
BAUD RATE	4800bps/9600bps/19200bps/38400bps
PARITY	NONE/ODD/EVEN
Data length	8 bit (fixed)
Start bit	1 bit (fixed)
Stop bit	1 bit (fixed)


- 3) Using the COMMUNICATION TYPE menu, select the DAISY CHAIN for each projector. ( **Operating Guide - OPTION menu - SERVICE – COMMUNICATION – COMMUNICATION TYPE**)

NOTE • The baud rate and parity of the **CONTROL IN** port do not need to be set up when connecting the projector to the computer by Ethernet.
• An unsuitable setup may cause the malfunction of communication with an external device.

3.8.3 Communication port

When connecting the projector to the computer by Ethernet, send the data from the computer to the projector with using the TCP # 9718 port.

3.8.4 COMMUNICATION GROUP / COMMUNICATION ID

When controlling some projectors in the DAISY CHAIN, to control a projector individually or some projectors in a group simultaneously, set up the COMMUNICATION GROUP and COMMUNICATION ID for each projector. Use the COMMUNICATION GROUP menu and COMMUNICATION ID menu to set up them. ( **Operating Guide - OPTION menu - SERVICE – COMMUNICATION – COMMUNICATION GROUP / COMMUNICATION ID**)

NOTE • The COMMUNICATION GROUP is set to A, and the COMMUNICATION ID is set to the 1, as the default settings.

- To control some projectors individually, do not set up the same COMMUNICATION ID to these projectors.

Alternatively, setting up the same COMMUNICATION ID to two or more projectors intentionally realizes simultaneous control for these projectors, like the coincident control with the COMMUNICATON GROUP.

3.8.5 Command for Daisy Chain control

For the command control of the DAISY CHAIN function, see the Technical part of the Operating Guide. ( **Operating Guide - Technical – Daisy Chain Communication**)