
Multi Projector Monitoring and Control Software

Setup and Operation Manual

June, 2008

Contents

Software Licensing Agreement	3	Operation Instructions (6)	21
Request Regarding Security	4	Brief Information Display (Monitoring Function)	21
Operating Environment	5	Information Acquisition Interval Setting Change	24
Function List	6	Operation Instructions (7)	25
Preparation	7	Detailed Information Display (Monitoring Function)	25
Installation	9	Addition/Deletion of Items to/from Detailed Information	27
Operation Instructions (1)	14	Operation Instructions (8)	28
Projector Registration	14	Error Display (Monitoring Function)	28
About User Name and Password	15	Error Log Storage/File Output	30
Operation Instructions (2)	16	Operation Instructions (9)	32
Creating a Group	16	Executing a Control Command	32
Operation Instructions (3)	17	Operation Instructions (10)	33
Creating a Keyword	17	Scheduling Function	33
Operation Instructions (4)	18	Operation Instructions (11)	36
Registering a Projector to a Group	18	Opening the Web Control Screen	36
Relocation/Rearrangement of a Group in the Hierarchical Level	18		
Operation Instructions (5)	19		
Assigning a Keyword to a Projector	19		
Deleting a Registered Projector/Group/Keyword	20		

Software Licensing Agreement

Use of this Software is governed by the terms defined in this Software Licensing Agreement.

- **Article 1 License**

Licensee is granted the right to use this software, including the information recorded or described on the CD-ROM and in the instruction manual and any other media provided to the Licensee (collectively “Software”), but all applicable rights to copyright or intellectual property in the Software are not transferable to the Licensee.

- **Article 2 Use by a Third Party**

Licensee may not transfer or allow any third party, to use or copy the Software, whether free of charge or not.

- **Article 3 Restrictions on Copying the Software**

Licensee may make a single copy of the Software in whole or in part solely for backup purposes.

- **Article 4 Computer**

Licensee may install and use the Software on more than one computer owned or managed by Licensee.

- **Article 5 Reverse Engineering, Decompiling or Disassembly**

Licensee may not reverse engineer, decompile or disassemble the Software. Matsushita shall not be bound by warranty for any defects in the Software caused by Licensee’s reverse engineering, decompiling or disassembly of the Software.

Furthermore, Matsushita or its distributors or dealers will not be responsible for any damage to the Licensee caused by Licensee’s reverse engineering, decompiling or disassembly of the Software.

- **Article 6 After-sales Service**

If a problem should occur with the Software while Licensee is using the Software, Licensee should notify Matsushita of the problem by telephone or letter. Matsushita shall undertake to notify Licensee of whether the problem is a known error in the program (“bug”), or whether the way in which the Software is to be used should be modified.

Furthermore, the Software is subject to revision without prior notice.

- **Article 7 Indemnification**

Matsushita’s liability with respect to this Software is limited to the conditions defined in Article 6 herein.

Matsushita or any of its distributors or dealers shall not be liable for any damage suffered by Licensee, either directly or through claims from a third party, arising from or in connection with Licensee’s use of the Software.

Furthermore, Matsushita makes absolutely no warranty for the use of this Software for any purpose other than for applications associated with the projector with which this Software is bundled.

- **Article 8 Export Control**

Licensee agrees not to export or re-export the Software to any country other than the country of purchase of the projector in any form without the appropriate export licenses under the regulations of the country where Licensee resides or of any other country as may be required by such export or re-export.

Please note the following.

- Panasonic cannot be held liable for any direct or indirect damages resulting from the use or malfunction of this projector.
- Panasonic cannot be held liable for damages arising from data corruption or loss as a result of using this projector.

Request Regarding Security

When using this product, security breaches of the type described below are conceivable.

- Leakage of your private information via this product
- Illegal operation of this product by a malicious third-party
- Harm to or cessation of operation of this product by a malicious third-party

Be sure to implement sufficient security measures.

- Make sure the password is as hard to guess as possible.
- Change the password periodically.
- Matsushita Electric Industrial Co., Ltd. and its affiliated companies never directly ask customers for their password. Do not give out your password even if directly asked by a third-party representing themselves as Matsushita Electric Industrial Co., Ltd.
- Always use on a network that has safety protection such as a firewall implemented.
- Set passwords, and limit the users that are permitted login access.

Operating Environment

PC	OS	Windows 2000 SP4 or later Windows XP Home Edition / Professional SP2 or later Windows Vista Home Basic/Home Premium/Business/Ultimate/Enterprise or later * 64-bit Windows and Mac are not supported.
	Display resolution	1024 x 768 pixels or higher is recommended
	Other	Wired or wireless LAN connectivity
Projector	Applicable models	<ul style="list-style-type: none">• PT-F100NT/FW100NT/F200NT * For network models only• PT-D5600/DW5000/D5700/DW5100/D4000/D3500• PT-D7700/DW7000 * Optional network board ET-MD77 series required.• PT-D10000/DW10000/DZ12000/D12000

- Proper operation cannot be guaranteed if the above system requirements are not met or if a self-built computer is used.
- Proper operation cannot be guaranteed for all computers even if they satisfy the above requirements.

Function List

Connection/registration	Maximum number of registerable projectors: 1,024 units
Grouping	Categorizes projectors into groups using "groups" or "keywords." Group: Up to 1,024 units, hierarchical arrangement (tree view), drag-and-drop for "move" and "register" Keyword: Up to 1,024 units
Brief information display (monitoring function)	Displays a list of multiple projectors registered in a selected group/keyword. Projector name, status (power ON/Mute/Warning/Error: Icon indication), input terminal, input signal, model name, serial number
Detailed information display (monitoring function)	Displays detailed information of a selected projector in text format. Brief information display + lamp selection, lamp output, lamp status, operating/remaining time, intake/exhaust temperature, optical module temperature, module operating time, software version (main/NT), self-diagnosis results
Error display	Displays a list of projectors that generated warnings/errors. Projector name, group name, detection time, error status Error log storage The log of generated warnings/errors can be output to a file.
Control function	Executes a control command in multiple projectors in a group. Power ON/OFF, AV Mute ON/OFF, input channel switching
Scheduling function	Executes the above three types of control commands at a specified day and time Maximum number of scheduled operations: 100, repeated operation (day of week/every day + time) possible
Other	Opens Web Control screen.

Preparation

■ PC

Network Setup

- Set the IP address, subnet mask and gateway according to the operating environment. (Consult your network administrator.)
- Turn off the proxy setting in the browser or register the IP addresses of the projectors to the proxy exceptions list.

■ Projectors

Network Setup

- Set the host name (projector name), IP address, subnet mask, and gateway. (Consult your network administrator.)

Set DHCP to OFF and set a fixed IP address, making sure that the entered IP address is not used by any other device on the LAN.

If the entered IP address is used by another device, the projector cannot be registered.

The host name set for the projector is displayed as the projector name on the software.

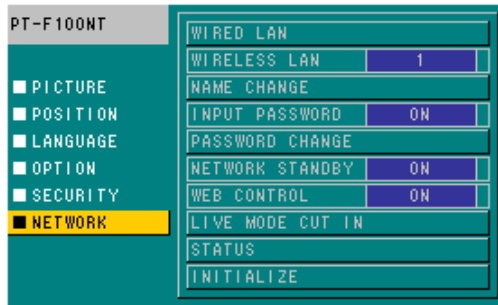
- Enable Web Control, Network Standby and PJLink Control.

For models in which the Web port number can be set, set the port number to "80."

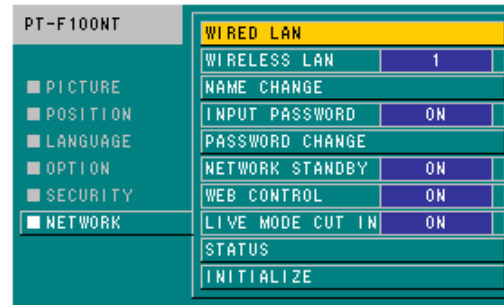
Others

- Disable Input Auto Search.

■ Projector Network Setting Screen (F100NT, with wired LAN connection)



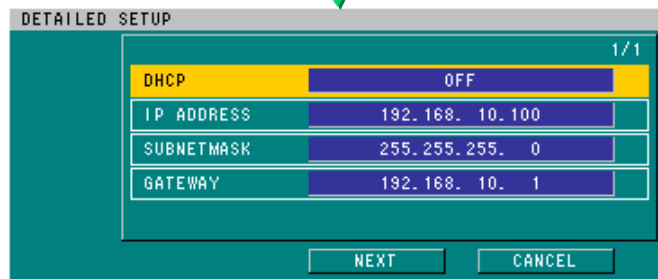
Select
NETWORK.



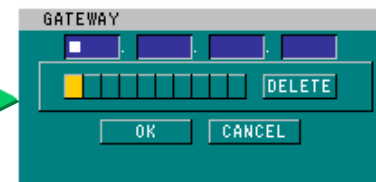
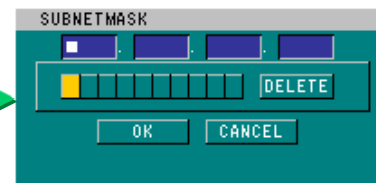
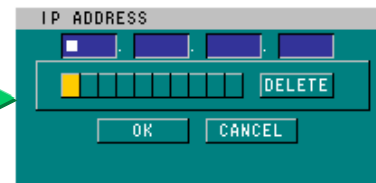
1. Set **NETWORK STANDBY** to ON.
2. Set **WEB CONTROL** to ON.

The projector name can be changed by clicking **Name Change.**

Select **WIRED LAN.**



Set **DHCP** to OFF.



Consult your network administrator for the IP address, subnet mask and gateway to enter.

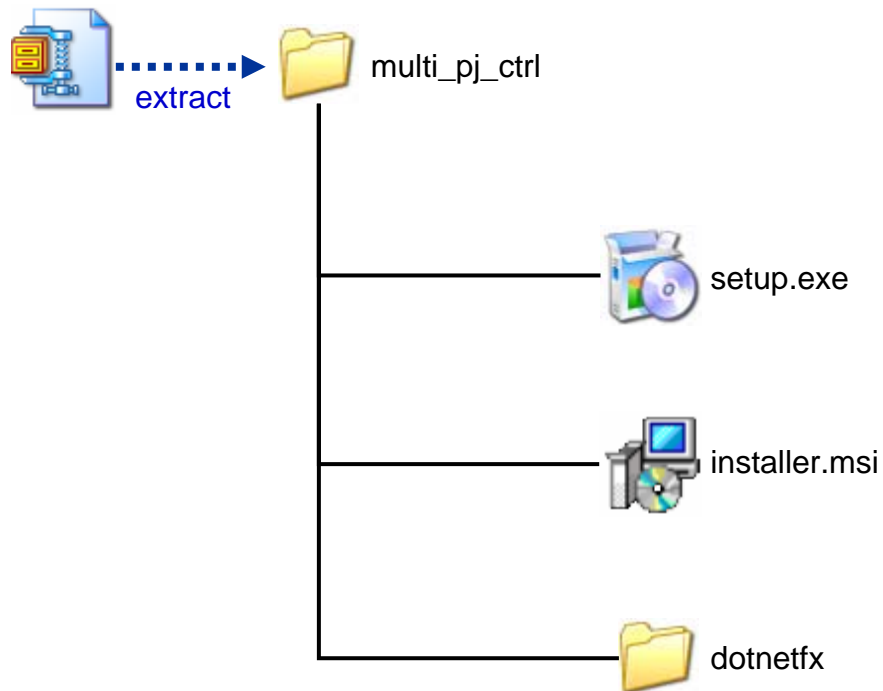
After entering all of the settings, click **OK** to apply them.

Installation

■ Preparing Software

Contents of Installation Folder

- The following shows the folder structure



■ Installation

Execute "setup.exe" in the folder of the desired language located in the main program folder to initiate the installation process.

- If the software is already installed, a screen for repair or uninstallation will appear.

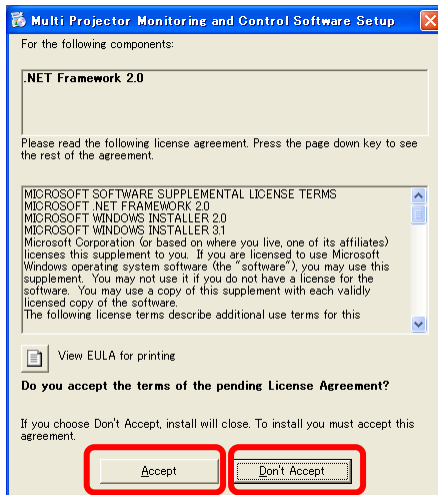
When the license agreement screen appears, select **I Agree**, and click **NEXT** or **OK** in all subsequent screens.

If Microsoft .NET Framework 2.0 is installed in the PC, an installer will automatically start up. In that case, install the program by following the instructions of the installer.

After the software is installed, the following shortcut icon appears on the desktop.



■ Installation Screen (when .NET Framework 2.0 is not installed)



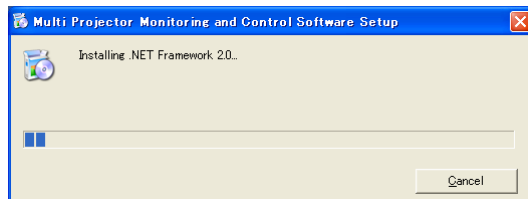
Click **Don't Accept**.



Clicking **OK** cancels the installation process



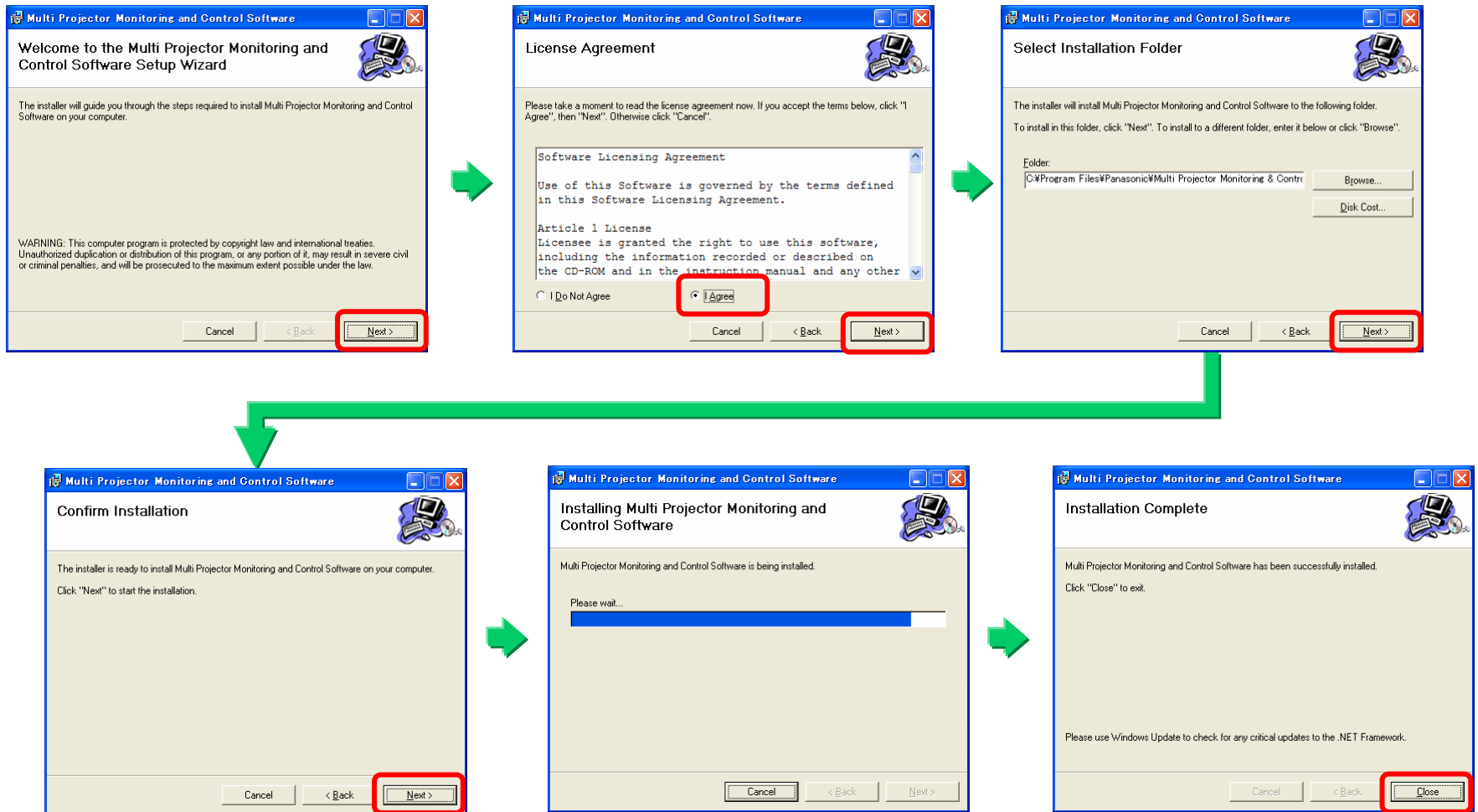
Click **Accept**.



To the first screen shown on the next page

Installation of .NET Framework 2.0

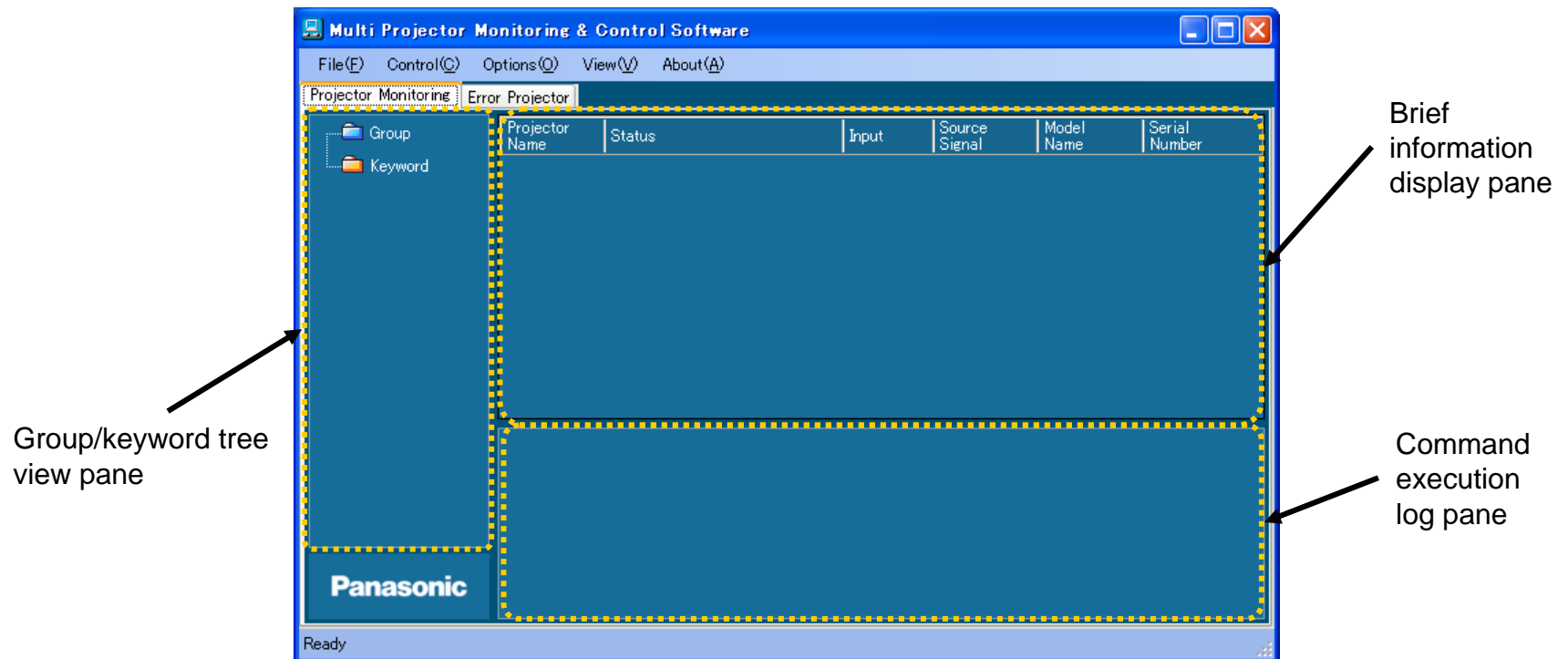
■ Installation Screen (when .NET Framework 2.0 is installed)



■ Confirming Program Startup

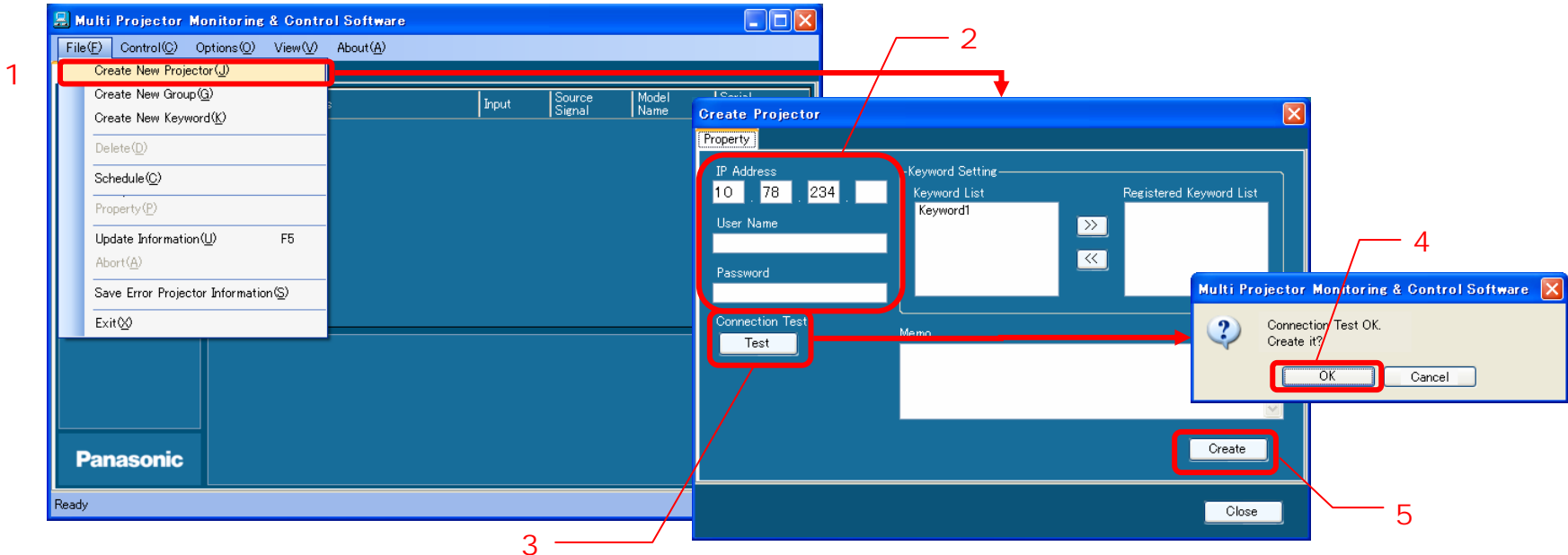
After the software is installed, double-click the shortcut icon on the desktop to make sure that the program starts up properly.

- **If the Japanese-version and/or Chinese-version program is installed in a PC running an OS other than the Japanese/Chinese version, screens may not appear properly.**



Operation Instructions (1)

■ Projector Registration



1. Select the desired group icon in the group/keyword tree view pane, and perform either (a) or (b).
(a) On the menu bar, select **File** → **Create New Projector** (1 in the above diagram).
(b) Right-click the selected group icon, and select **Create New Projector** in the context menu.
2. Enter the IP address of the projector to connect to, user name and password (2 in the above diagram).
3. Select **Test** (3) to conduct a connection test.
→ If the connection test does not end successfully, check the IP address, user name and password.
4. Click **OK** in the connection test success/registration confirmation dialog box (4 in the above diagram).
⇒ A projector icon will be created in the group/keyword tree view pane.

It is possible to register a projector without performing the connection test by clicking the **Create** button (5 in the above diagram).

■ About User Name and Password

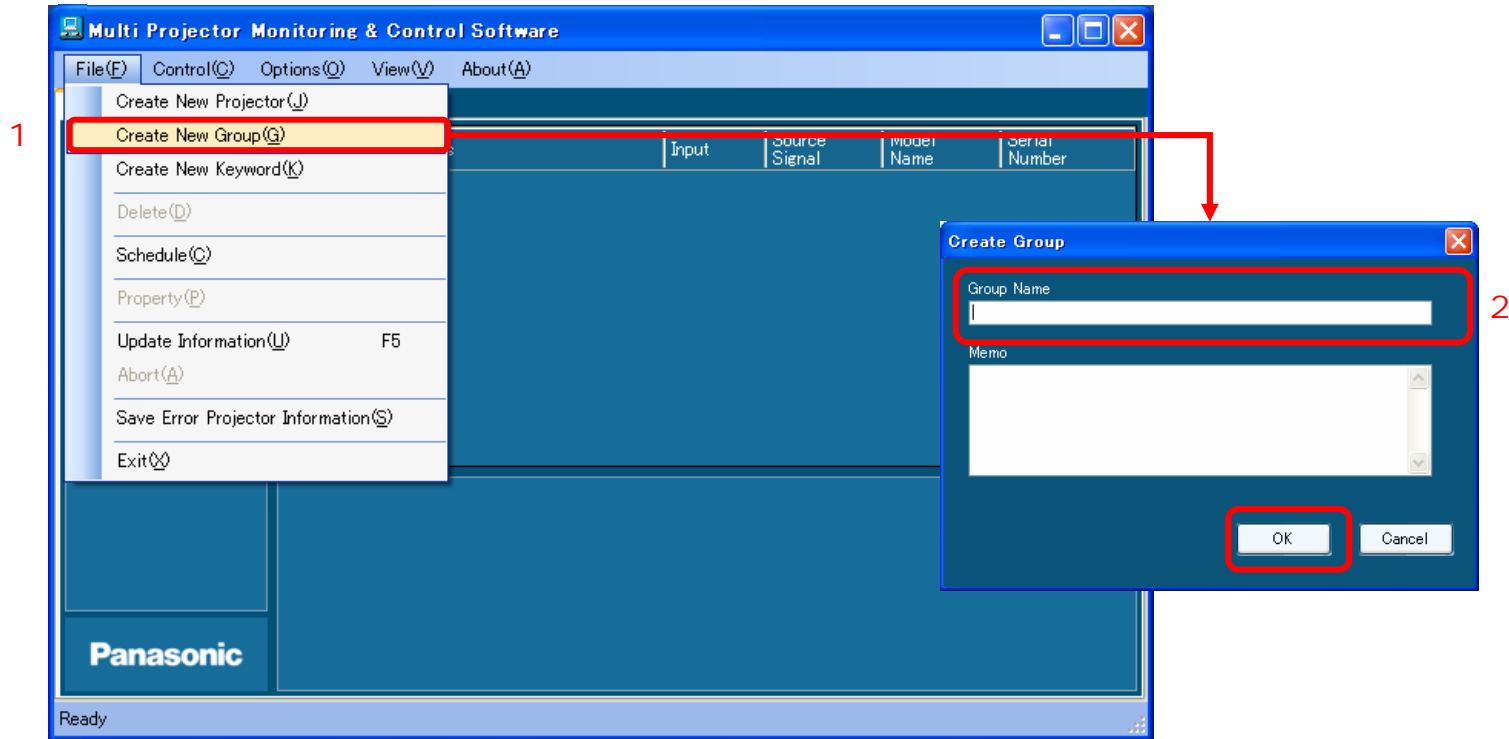
The default user name and password are shown in the table below.

If the password has been changed in the Web Control screen, enter the currently valid password.

Model number	User Name	Default Password
F100NT/FW100NT/F200NT	user1	None
D5600/DW5000/D5700/DW5100/D4000/D3500 D7700/DW7000 D10000/DW10000	user1	panasonic
DZ12000/D12000	admin1	panasonic

Operation Instructions (2)

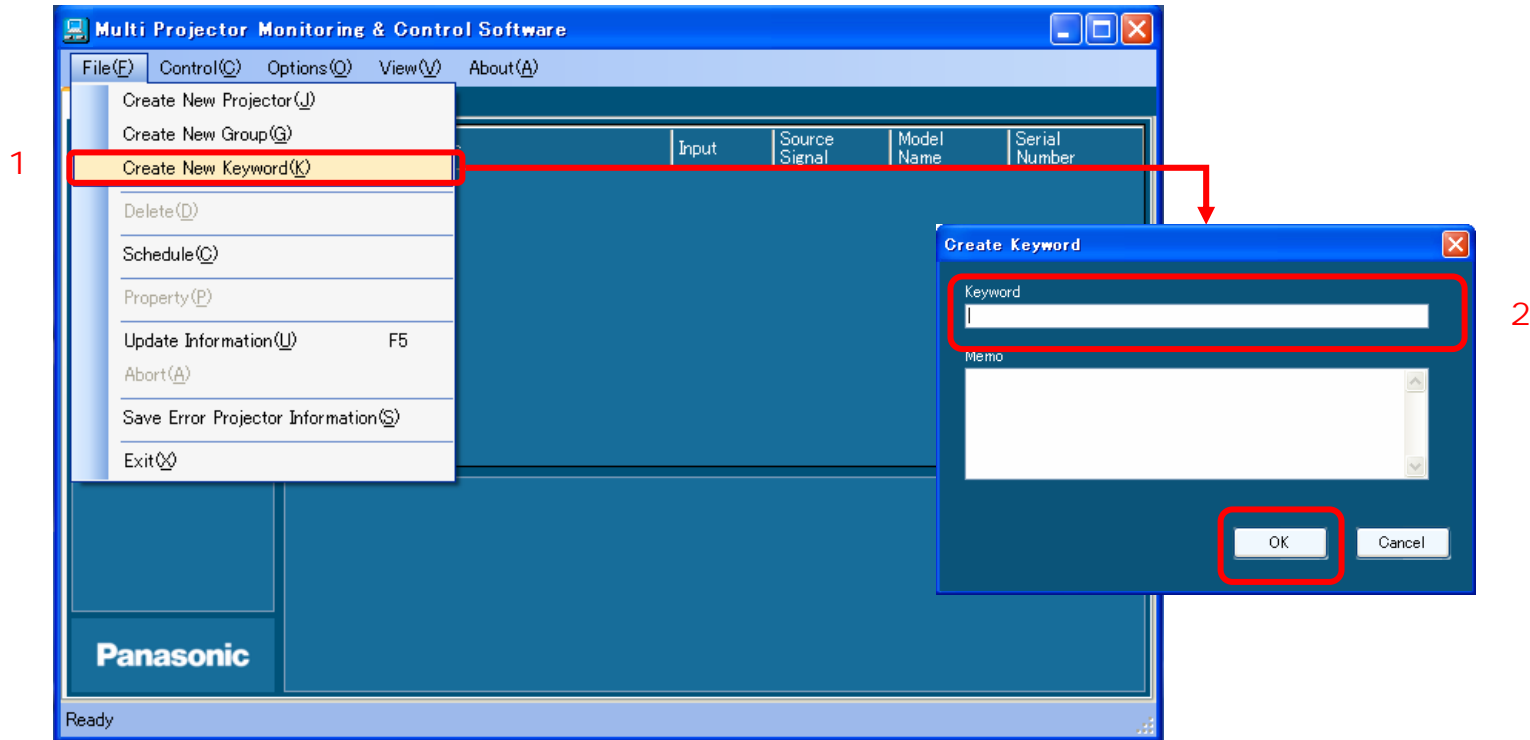
■ Creating a Group



1. Select the desired group icon in the group/keyword tree view pane, and perform either (a) or (b).
(a) On the menu bar, select **File** → **Create New Group** (1 in the above diagram).
(b) Right-click the selected group icon, and select **Create New Group** in the context menu.
2. Enter a new group name (max. 128 characters) in the **Group Name** text box (2 in the above diagram), and click **OK**.
(* A memo may be added, if desired.)
⇒ A new group icon will be created in the group/keyword tree view pane.

Operation Instructions (3)

■ Creating a Keyword



1. Select the desired group/projector/keyword icon in the group/keyword tree view pane, and select **File** → **Create New Keyword** (1 in the above diagram) on the menu bar.
2. Enter a new keyword (max. 128 characters) in the **Keyword** text box (2 in the above diagram), and click **OK**.
(* A memo may be added, if desired.)
⇒ A new keyword icon will be created in the group/keyword tree view pane.

Operation Instructions (4)

■ Registering a Projector to a Group

A projector can be registered to a group or moved from one group to another by dragging the icon of the projector in the group/keyword tree view pane onto the icon of the destination group.

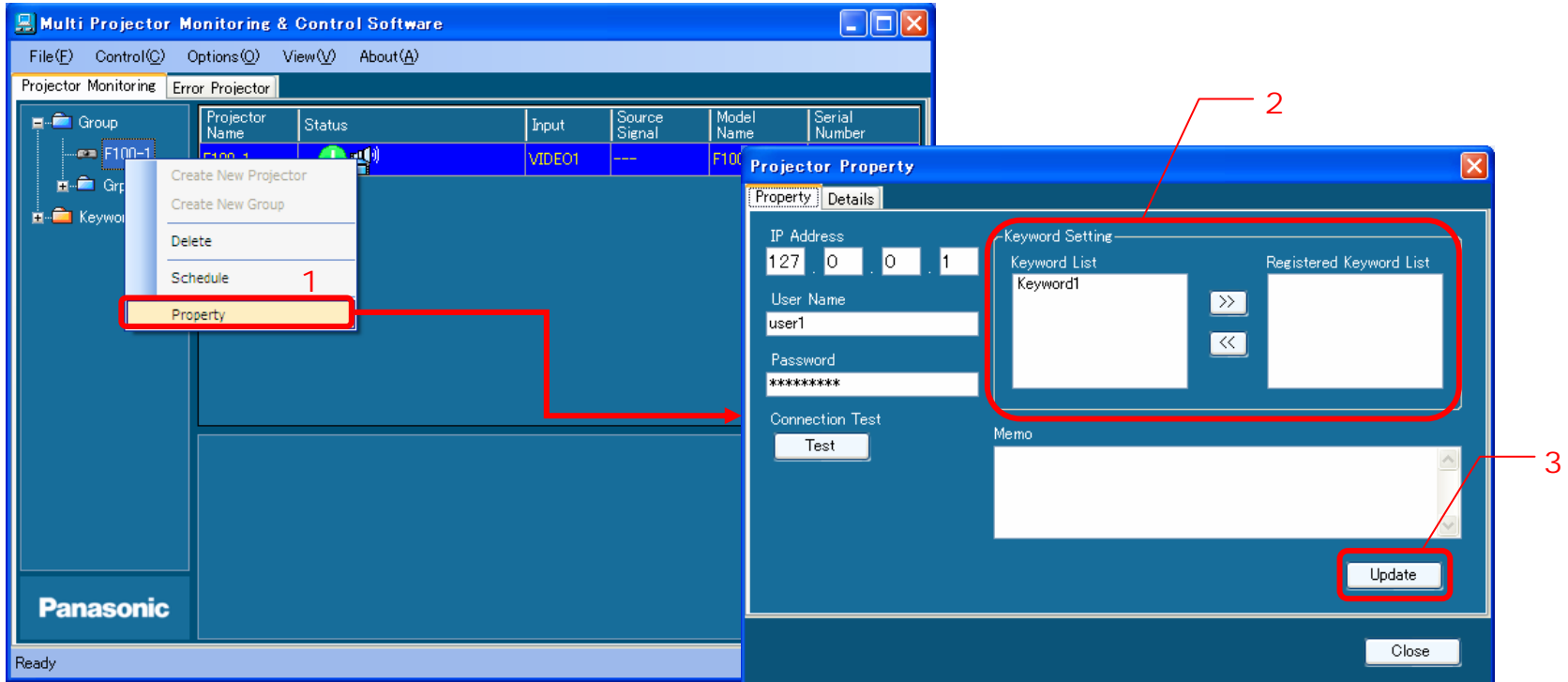
■ Relocation/Rearrangement of a Group in the Hierarchical Level

A group can be moved/rearranged in the hierarchical level by dragging the group icon onto another group in the group/keyword tree view pane.

- The above operation also moves the groups and projectors belonging to that group.
- The information of the operation schedules (described in a later section) for the relocated projectors and the group will also be moved together.

Operation Instructions (5)

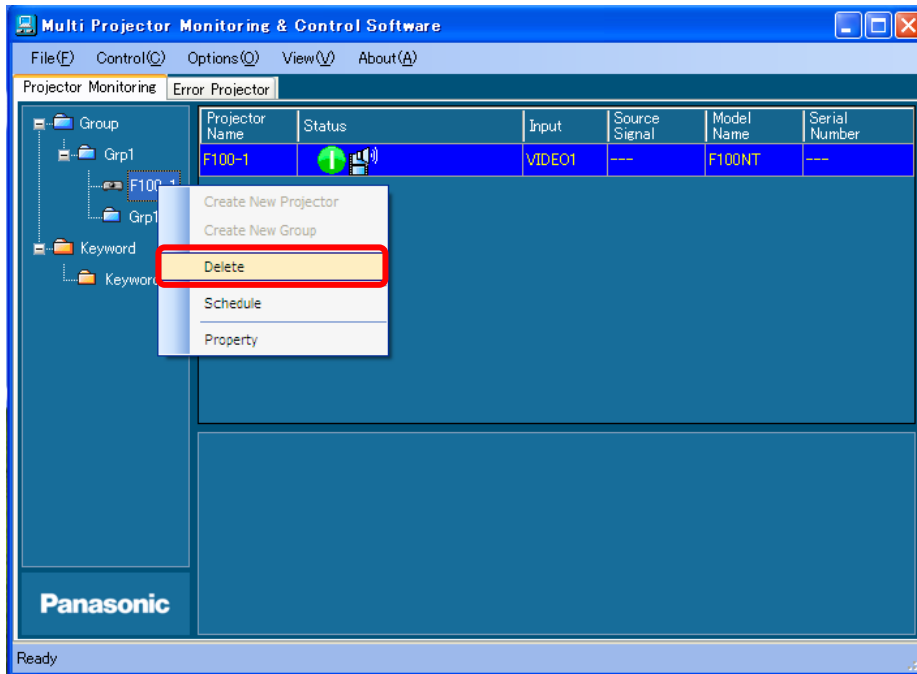
■ Assigning a Keyword to a Projector



1. Select the desired projector icon in the group/keyword tree view pane, and perform either (a) or (b).
(a) Right-click the selected projector icon, and select **Property** in the context menu (1 in the above diagram).
(b) Select **File** → **Property** on the menu bar.
2. Move the keyword to be assigned from **Keyword List** to **Registered Keyword List** by using the >> button (2 in the above diagram).
3. Click **Update** (3 in the above diagram) to assign the keyword.

** To cancel the keyword assignment, follow the above procedure in reverse.*

■ Deleting a Registered Projector/Group/Keyword



Select the projector/group/keyword icon to be deleted in the group/keyword tree view pane, and perform either (a) or (b).

(a) Select **File** → **Delete** on the menu bar (see the above diagram).

(b) Right-click the selected icon, and select **Delete** in the context menu.



When a confirmation dialog box appears, click **OK**.

* A group registered with projectors cannot be deleted. To delete such a group, delete the registered projectors or change the registered location of the projectors (move to another group) first.

Operation Instructions (6)

■ Brief Information Display (Monitoring Function)

Displayed information will be updated according to the settings.

- Information will be automatically updated every 10 minutes in the default setting.

Information is displayed by group or keyword.

Information that cannot be obtained is indicated by "---".

The display of the signal name and serial number is dependent on the model.
Signal name display is not supported by F100/FW100/F200, D3500, D5600/DW5000 or D7700/DW7000 models.
Serial number display is supported on models of the D12000 series and newer.

Projector Name	Status	Input	Source Signal	Model Name	Serial Number
D12000-0		RGB1	VGA60-A2	D12000	123456789AB
D5700-1		RGB1	VGA60-A2	D5700	---
D10000-2		RGB1	---	D10000	---
F100NT-3		RGB1	---	F100NT	---

Projector Name	Status	Input	Source Signal	Model Name	Serial Number
[00000001]	2008/03/10 12:57:16 [D12000-0] POWER				
[00000002]	2008/03/10 12:57:16 [D10000-2] POWER				
[00000003]	2008/03/10 12:57:16 [F100NT-3] POWER				
[00000004]	2008/03/10 12:57:17 [D5700-1] POWER				

Displays the information of all projectors that belong to the selected group/keyword.

Contents of Status Display

All-time display

- Power supply status
 - AV Mute status
- OR
- Not connected or information update failure
 - Information acquisition failure

Displayed only when detected

- Lamp warning or error
- Temperature warning or error
- Filter warning or error
- Other warning or error

List of Status Icons



Not connected



Information update failure



Information acquisition failure

Power supply status



Power ON



Power OFF (Standby)



Cooling operation



Warm-up operation

AV mute status



AV Mute OFF



AV Mute ON

Warning/error



Lamp warning



Lamp error



Temperature warning



Temperature error



Filter warning



Filter error



Other warning

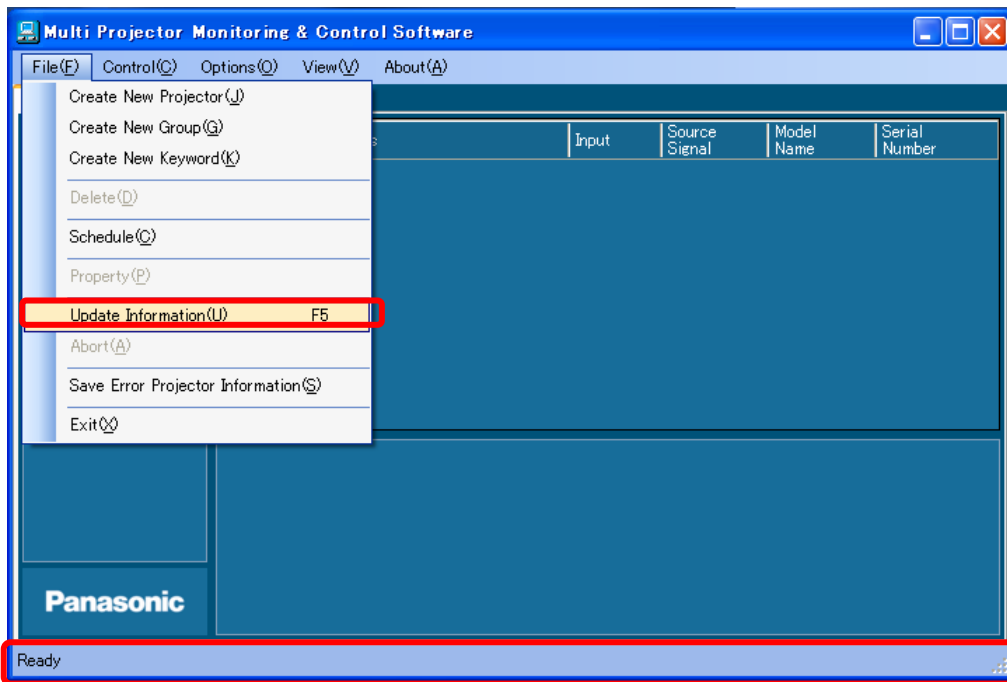


Other error

(Fan error, cover open, etc.)

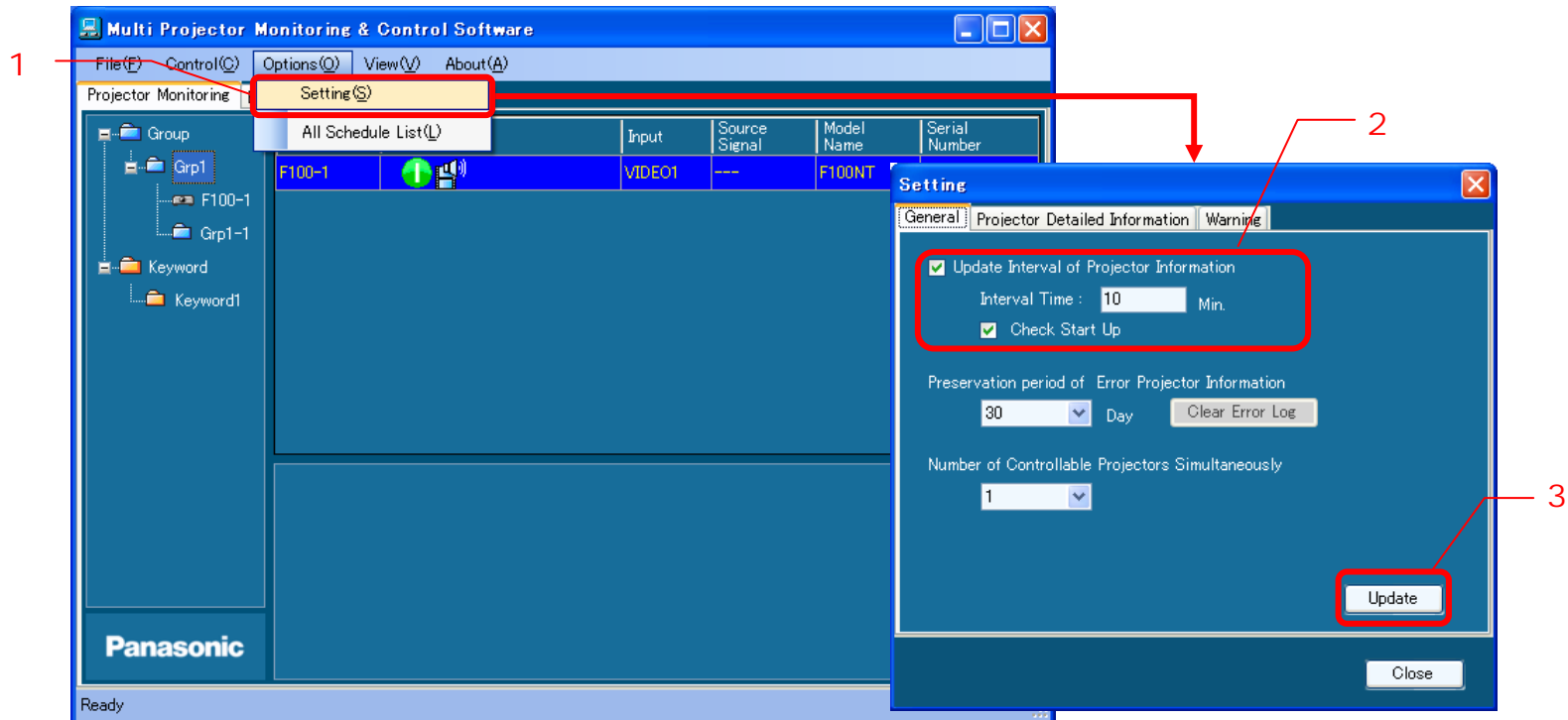
To display up-to-date information after the status of a projector has changed due to operations performed with a remote control or control panel, perform either (a) or (b) below.

- (a) Press the F5 button on the keyboard.
- (b) Select **File** → **Update Information** on the menu bar (1 in the diagram below).



The indication on the status bar (2 in the left diagram) changes from **Ready** to **Updating Projector Information** and a progress bar appears on the right side. When the status bar indicates **Ready** again, the displayed information has been updated.

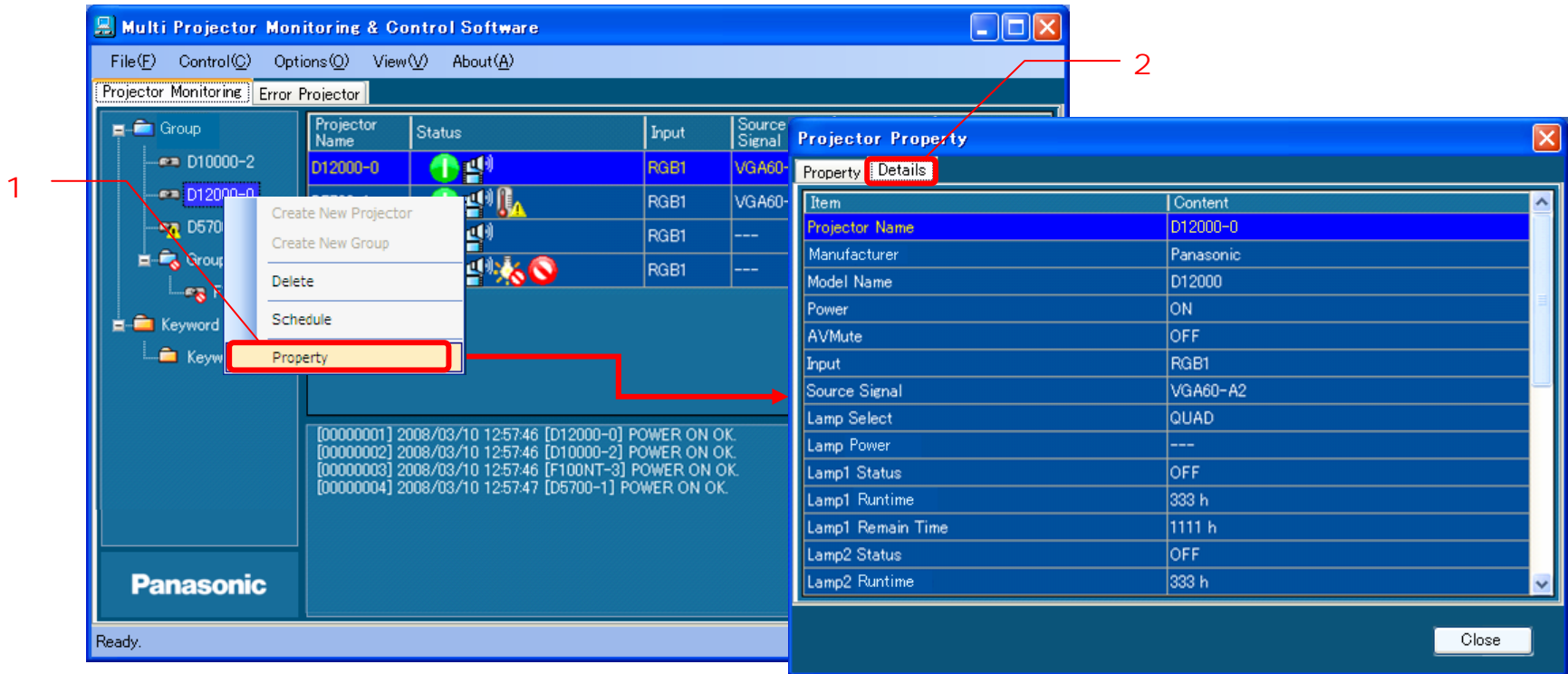
■ Information Acquisition Interval Setting Change



1. Select **Options** → **Setting** on the menu bar (1 in the above diagram).
2. Select the **General** tab, and enter the desired time (unit: minutes) in the **Interval Time** text box (2 in the above diagram). The setting range is from 1 to 9,999 minutes, in 1-minute steps.
 - * If the **Update Interval of Projector Information** checkbox is not selected, information will not be updated automatically.
 - * If the **Check Start Up** checkbox is selected, information will be updated at each startup of the software.
3. Click **Update** to apply the new settings (3 in the above diagram).

Operation Instructions (7)

■ Detailed Information Display (Monitoring Function)



1. Select the desired projector icon in the group/keyword tree view pane, and perform (a), (b) or (c).
 - (a) Right-click the selected projector icon, and select **Property** in the context menu (1 in the above diagram).
 - (b) Select **File** → **Property** on the menu bar.
 - (c) Right-click the projector in the brief information display pane, and select **Property** in the context menu.
2. Select the **Details** tab (2 in the above diagram) in the displayed window.

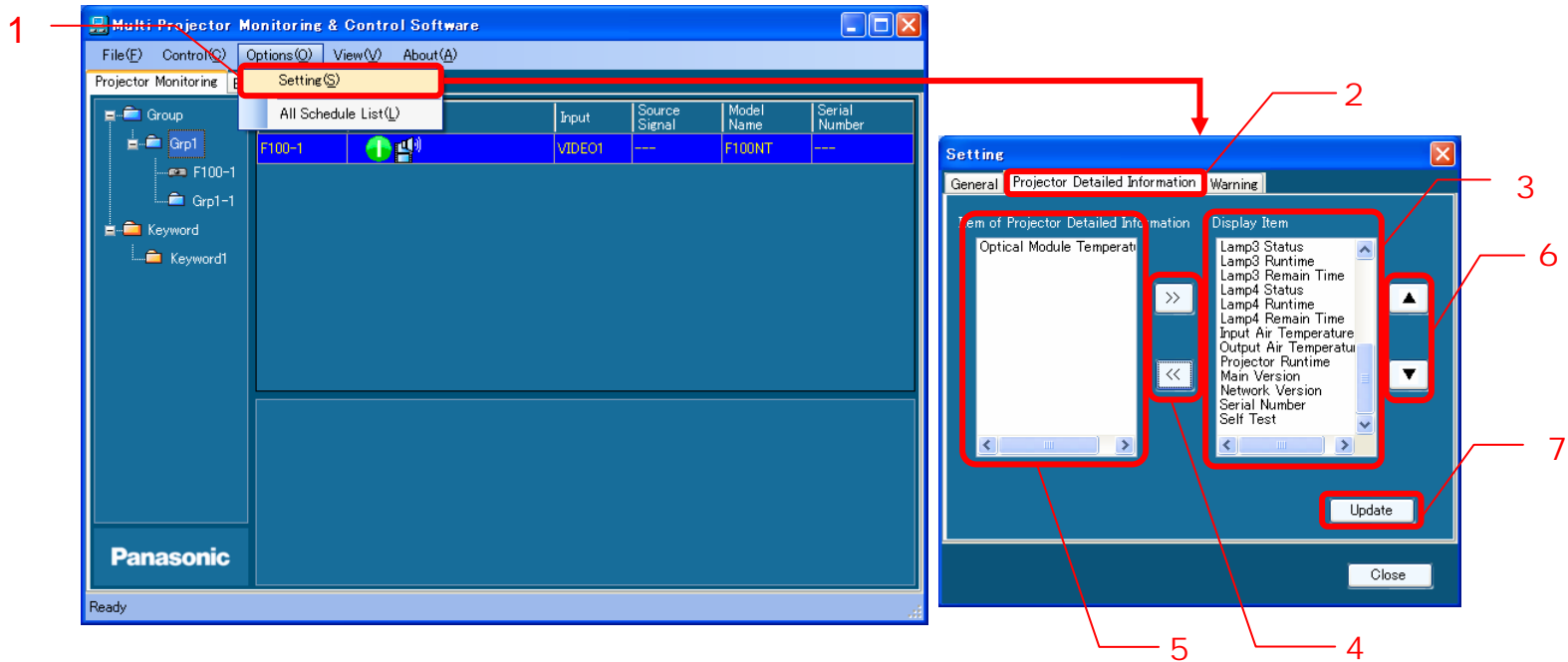
**Only when step (a) or (b) described in step 1 above is performed.*
3. Information that could not be obtained is indicated with "---".

Items Indicated in Detailed Information Display

- The detailed information display shows the information listed in the table below.

Item	Description	Item	Description
Projector Name	Projector name	Lamp 3 Status	Lamp 3 status
Manufacturer	Manufacturer's name	Lamp 3 Runtime	Lamp 3 operating time
Model Name	Model name	Lamp 3 Remain Time	Lamp 3 remaining time
Power	Power supply status	Lamp 4 Status	Lamp 4 status
AV Mute	AV Mute status	Lamp 4 Runtime	Lamp 4 operating time
Input	Input channel	Lamp 4 Remain Time	Lamp 4 remaining time
Source Signal	Input signal	Input Air Temperature	Intake temperature
Lamp Select	Lamp selection	Output Air Temperature	Exhaust temperature
Lamp Power	Lamp output	Optical Module Temperature	Optical module temperature
Lamp 1 Status	Lamp 1 status	Projector Runtime	Projector operating time
Lamp 1 Runtime	Lamp 1 operating time	Main Version	Main microcomputer software version
Lamp 1 Remain Time	Lamp 1 remaining time	Network Version	Network microcomputer software version
Lamp 2 Status	Lamp 2 status	Serial Number	Serial number
Lamp 2 Runtime	Lamp 2 operating time	Self Test	Self-diagnosis results
Lamp 2 Remain Time	Lamp 2 remaining time		

■ Addition/Deletion of Items to/from Detailed Information Display and Change of Display Sequence



1. Select **Options** → **Setting** on the menu bar (1 in the above diagram).
2. Select the **Projector Detailed Information** tab (2 in the above diagram) in the **Setting** window.
 - i. Select an item in the **Display Item** list (3 in the above diagram), and move it to the **Item of Projector Detailed Information** list (5 in the above diagram) by using the << button (bottom button in 4 in the above diagram) to delete it from the detailed information display. Select an item in the **Item of Projector Detailed Information** list, and move it to the **Display Item** list by using the >> button (top button in 4 in the above diagram) to add it to the detailed information display.
 - ii. Select an item in the **Display Item** list, and move it up or down by using the "▲" or "▼" button (6 in the above diagram) to change the display sequence in the detailed information display.
3. Click **Update** (7 in the above diagram) to apply the setting change.

Operation Instructions (8)

■ Error Display (Monitoring Function)

Multi Projector Monitoring & Control Software

File(F) Control(C) Options(O) View(V) About(A)

Projector Monitoring Error Projector

Group	Projector Name	Status	Input	Source Signal	Model Name	Serial Number
D10000-2	D12000-0	🟢	RGB1			
D12000-0	D5700-1	🟢	RGB1			
D5700-1	D10000-2	🔴	RGB1			
Group2	F100NT-3	🔴	RGB1			
F100NT-3		🔴				

Multi Projector Monitoring & Control Software

File(F) Control(C) Options(O) View(V) About(A)

Projector Monitoring Error Projector

Error Projector Name	Group	Checked Time	Error Status
D10000-2	Group	2008/03/10 12:50:04	🔴
D5700-1	Group	2008/03/10 12:50:04	🔴
F100NT-3	Group	2008/03/10 12:50:04	🔴

Ready.

Panasonic

Projector/group icon

Warning generation: ⚠️ appears at the lower right of the icon.

Error generation: 🚫 appears at the lower right of the icon.

* Keyword icons will not change.

When icons indicating a warning or error are shown, select the Error Projector tab.
⇒ The display changes to a screen that shows a list of all projectors that have generated a warning or error.

Warning/Error Generating Conditions

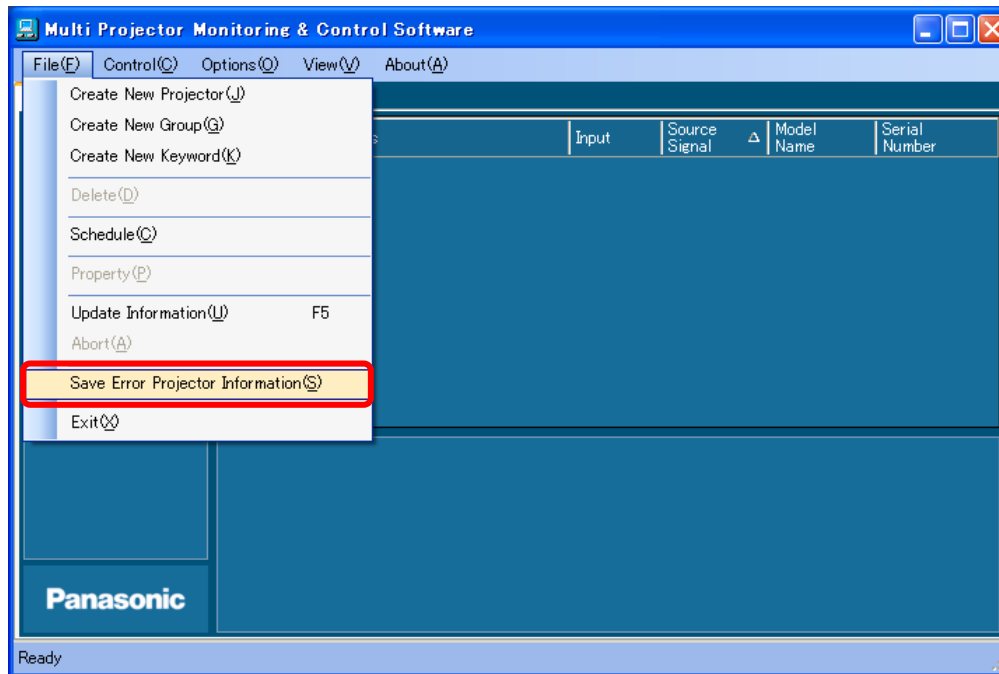
- When a warning or error is detected, the projector unit will be set to the following status.

Detected warning/error	Projector status
Temperature warning	Intake temperature, exhaust temperature or optical module temperature is high. Optical module temperature is low.
Temperature error	Intake temperature, exhaust temperature or optical module temperature is high. Optical module temperature remained low for a certain time duration. Intake temperature, exhaust temperature or optical module sensor is disconnected.
Lamp warning	Lamp replacement time has been reached.
Lamp error	Lamp replacement is overdue, lamp illumination failed, lamp is not installed, or lamp is malfunctioning.
Filter warning	Low remaining amount of ARF.
Filter error	Filter is clogged, ACR/ARF is not installed, filter winding failed, or there is no remaining ARF.
Other warning	—
Other error	Lamp unit cover remaining open, fan error, shutter error, aperture error, color wheel error, ACR/ARF not installed, filter cleaning process time-out, DC voltage error, lens shift error, internal clock battery replacement required, no response from internal IC, software version check error, microcomputer software error, microcomputer internal error, etc.

For further details, refer to the operation manual of the projector.

■ Error Log Storage/File Output

The projector error log is stored for the time period specified in the software. The error log can also be output to a file (csv format).



- Select **File** → **Save Error Projector Information** on the menu bar, and select the location to save the log and enter a file name (see the above diagram).
- Select **Options** → **Setting** on the menu bar, and click the General tab. Set the error log storage period to 15, 30, 60 or 90 days in the **Preservation period of Error Projector Information** section. The error log can be cleared by clicking the **Clear Error Log** button.

About Error Log File Contents

- The error log file describes error information in the following format.

```
Multi Projector Monitoring & Control Software
Version, V.1.0L017
Time, 2008/04/07 13:55:03
```

← **Software name**

← **Version**

← **Date and time of file storage**

```
Projector Name, Developer, Model Name, Checked Time, Error Status, Self Diagnosis
F100NT-3, Panasonic, F100NT, 2008/03/10 12:54:47, 120000, 0000000000000000
D5700-1, Panasonic, D5700, 2008/03/21 08:11:47, 002000, 0000000000000000
D10000-1, Panasonic, D10000, 2008/03/24 21:31:47, 000200, 00000000000000000000000000000000
FW100NT-2, Panasonic, FW100NT, 2008/04/01 14:01:47, 000010, 0000000000000000
[EOF]
```

← **File end indication**

- The following information is stored.

Projector name

Manufacturer's name

Model name

Time when error generation was confirmed

Error status: Acquired error information (6 digits)

Self-diagnosis information: Self-diagnosis information (16 or 32 digits) that can be obtained by the self-diagnosis command

- Provide this information when contacting the Service Department.

Operation Instructions (9)

■ Executing a Control Command

The screenshot shows the 'Multi Projector Monitoring & Control Software' interface. The main window has a menu bar with 'File(F)', 'Control(C)', 'Options(O)', 'View(V)', and 'About(A)'. Below the menu bar is a 'Control Command(L)' button. The main area is divided into a tree view on the left and a table of projectors on the right. The tree view shows a hierarchy of groups and keywords. The projector table has columns for Projector Name, Status, Input, Source Signal, Model Name, and Serial Number. A 'Control Command' dialog box is open, showing a 'Function' dropdown set to 'Power' and a 'Status' dropdown set to 'ON'. Below the dialog box is a 'Command Execution Result' section with a table showing the results for each projector. The 'Panasonic' logo is visible in the bottom left corner.

Projector Name	Status	Input	Source Signal	Model Name	Serial Number
D12000-0	ON	RGB1	VGA60-A2	D12000	0123456789A
D5700-1	ON	RGB1	VGA60-A2	D5700	---
D10000-2	OFF	RGB1	---	D10000	---
F100NT-3	OFF	RGB1	---	F100NT	---

Projector Name	Status	Result
D12000-0	Finished	OK
D5700-1	Finished	NG
D10000-2	Finished	OK
F100NT-3	Ready	

Log messages:

```
[00000001] 2008/03/10 12:57:46 [D12000-0] POWER ON OK.  
[00000002] 2008/03/10 12:57:46 [D10000-2] POWER ON OK.  
[00000003] 2008/03/10 12:57:47 [D5700-1] POWER ON NG
```

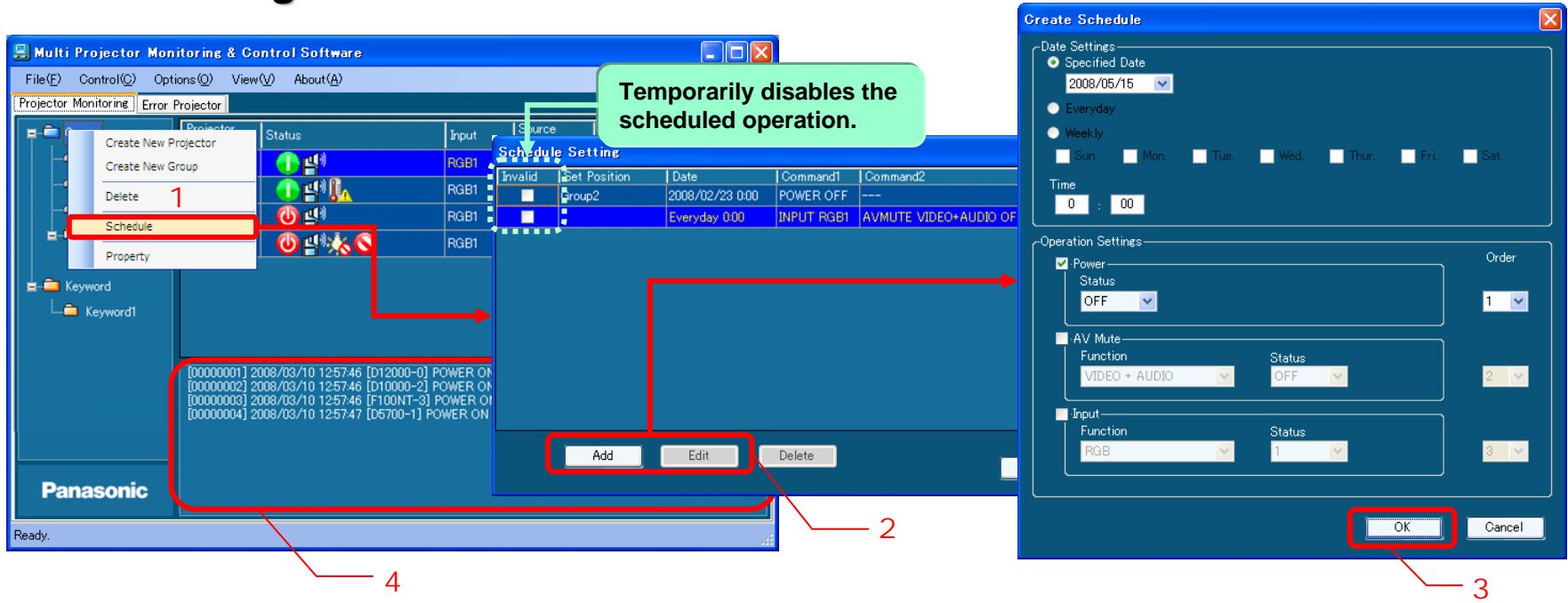
1. Select a group/keyword/projector icon in the group/keyword tree view pane (1 in the above diagram).
2. Select **Control** → **Control Command** on the menu bar to open the control command execution window (2 in the above diagram).
3. After selecting a command, click **Start** (3 in the above diagram).

Executable commands Power ON/OFF, AV Mute ON/OFF (Audio/Video/Video & Audio), input terminal switching (RGB 1-9/Video 1-9/Digital 1-9/Storage 1-9/Network 1-9)

4. The results of command execution will be shown in the **Command Execution Result** section (4 in the above diagram) and in the command execution log pane (5 in the above diagram).

Operation Instructions (10)

■ Scheduling Function



1. In the group/keyword tree view pane, select the icon of a group/keyword/projector to be programmed for a scheduled operation, and perform either (a) or (b).
 - (a) Right-click the selected icon, and select **Schedule** in the context menu (1 in the above diagram).
 - (b) Select **File** → **Schedule** on the menu bar.
2. To add a new schedule, click **Add**. To correct or change an existing schedule, select that schedule and click **Edit** (2 in the above diagram).
* Schedules indicated in the **Set Position** section cannot be modified.
3. Create a schedule and click **OK** (3 in the above diagram).
Setting items Command start time: Specified date/Everyday/Weekly (multiple days of the week can be specified) + Time
 Control command: Power ON/OFF, AV Mute ON/OFF, input terminal switching (one each, sequence can be changed)
4. The set command is executed at the specified time (PC clock time). The results will be displayed in the command execution log pane (4 in the above diagram).

Correcting/Changing Schedules in "Set Position"

- When a schedule is set from a location other than the selected group/keyword/projector, The "Set Position" indicates the location where the schedule was programmed. If it was set for the group to which the projector belongs, "**G: Group Name**" is indicated. If it was set for the keyword assigned to the projector, "**K: Keyword**" is indicated.
- To correct/change a schedule indicated in "**Set Position**," close all schedule setting windows, select a group or keyword indicated in "**Set Position**" in the group/keyword tree view pane, and follow the schedule correction/change procedure described on the previous page.

Displaying a Schedule List and Confirming Overlapping Schedules

- If there are overlapping schedules (with the same start time specified twice or more), proper operation of the projector cannot be guaranteed. Therefore, it is necessary to correct overlapping schedules.

Multi Projector Monitoring & Control Software

Options → All Schedule List(L)

Projector Name	Set Position	Date	Command1	Command2	Command3
D10000-0	G : Group	Every Week Mon,Thur 8:00	POWER ON	---	---
D10000-0	G : Group	Every Week Mon,Thur 18:00	POWER OFF	---	---
D5700-1	G : Group	Every Week Mon,Thur 8:00	POWER ON	---	---
D5700-1	G : Group	Every Week Mon,Thur 18:00	POWER OFF	---	---
D12000-2	G : Group	Every Week Mon,Thur 8:00	POWER ON	---	---
D12000-2	G : Group	Every Week Mon,Thur 18:00	POWER OFF	---	---
F100NT-3	G : Group2	2008/02/23 0:00	POWER OFF	---	---
F100NT-3	P : F100NT-3	Everyday 0:00	INPUT RGB1	AVMUTE VIDEO+AUDIO OFF	---
F100NT-3	G : Group	Every Week Mon,Thur 8:00	POWER ON	---	---
F100NT-3	G : Group	Every Week Mon,Thur 18:00	POWER OFF	---	---

Legend:
 K: Keyword
 P: Projector
 G: Group

Overlapping schedules (with the same start time specified twice or more) are indicated in red.

1. Select **Options** → **All Schedule List** on the menu bar.
2. A list of schedules will be displayed.
 If there are overlapping schedules for one or more projectors, the lines will be indicated in red.
 ⇒ In that case, perform the schedule correction/change procedure described in the previous pages to cancel overlapping schedules or check the **Invalid** checkbox shown at the center of the diagram on page 33 to temporarily disable the schedules.

Operation Instructions (11)

■ Opening the Web Control Screen

The screenshot shows the 'Multi Projector Monitoring & Control Software' interface. The 'Projector Monitoring' pane displays a tree view on the left and a table of projectors on the right. The 'Projector' column is highlighted, and a red box is drawn around the 'F100-1' projector name. A red arrow points from this box to the 'Projector Web Control - F100-1' window. This window displays the 'Projector Control Window' with various status and control options.

Projector Name	Status	Input	Source Signal	Model Name	Serial Number
F100-1	ON	RGB1		F100NT	

Status information		Network status	
PROJECTOR TYPE	F100NT	VERSION	2.09
POWER	ON STANDBY	INPUT	COMPUTER2
INPUT AIR TEMPERATURE	22 °C / 71 °F		
OUTPUT AIR TEMPERATURE	51 °C / 123 °F		
FILTER REMAINING	OK		
LAMP RUNTIME	592 H		
PROJECTOR RUNTIME	538 H	SELF TEST	No errors

To open the Web Control screen, double-click a projector name in the brief information display pane or right-click it and select **Web Control**.

The Web Control screen can also be opened from a Web browser.

Trademarks

- Microsoft and its logo as well as Windows, Windows XP® and Windows Vista® are either registered trademarks or trademarks of Microsoft Corporation in the United States and/or other countries.
- Other company names, product names or other names noted in this manual are trademarks or registered trademarks of the respective companies. Note that ® and TM marks are not indicated in the text of this manual.

Notes:

- Unauthorized use or reproduction of part or all of this product software and manuals is strictly prohibited.
- Panasonic cannot be held liable for any effects resulting from the use of this product software and manuals.
- Panasonic reserves the right to revise this product software specifications and manual contents without notice.

Matsushita Electric Industrial Co., Ltd.